

# How to Become a CSEDW Provider

Aetna Better Health of West Virginia is the current contractor who manages the CSEDW provider network and is accepting applications now.

To become a CSEDW provider you must:



1

- Be designated as a Licensed Behavioral Health Center (LBHC)
- Apply and receive a Certificate of Need (CON) or exemption for any new proposed healthcare service in West Virginia through the West Virginia Health Care Authority

Please contact the WV Health Care Authority at **304-558-7000** or visit **hcawv.org** for more information and steps needed.

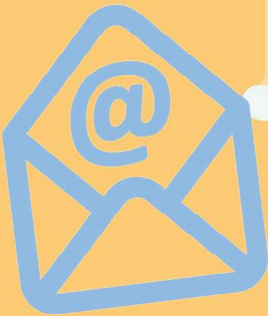


2

Obtain a signed contract with the current Managed Care Organization (MCO).



For more information about the unique services that can be provided, the “team”/wraparound model, and reimbursement rates, please visit **WVMedicaidWaiver.com/CSEDW/Provider** or scan the QR Code.



3

Notify the WV DHHR Office of Health Facility Licensure and Certification (OHFLAC) about adding CSEDW services to ensure no changes to your agency’s license are needed or to apply for a behavioral health center license.

Contact OHFLAC at **304-558-0050** or visit **ohflac.wvdhhr.org/Programs/BH.html**.

4

Be a Medicaid provider and be designated as a CSEDW provider.

To sign up or change your provider enrollment to add CSEDW, contact Gainwell Technologies at **888-483-0793** or visit **wmmis.com**.



**FOR MORE INFORMATION** or questions about helping create a brighter future for children and young adults with serious emotional disorders in West Virginia, contact Jennifer Eva, CSEDW Senior Project Manager, at 304-533-8300 or email [evaj@aetna.com](mailto:evaj@aetna.com).