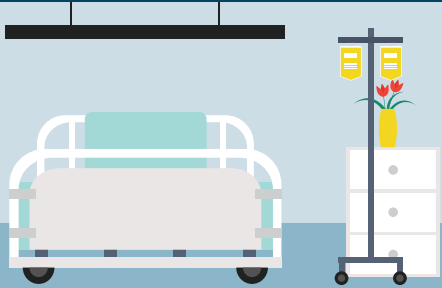

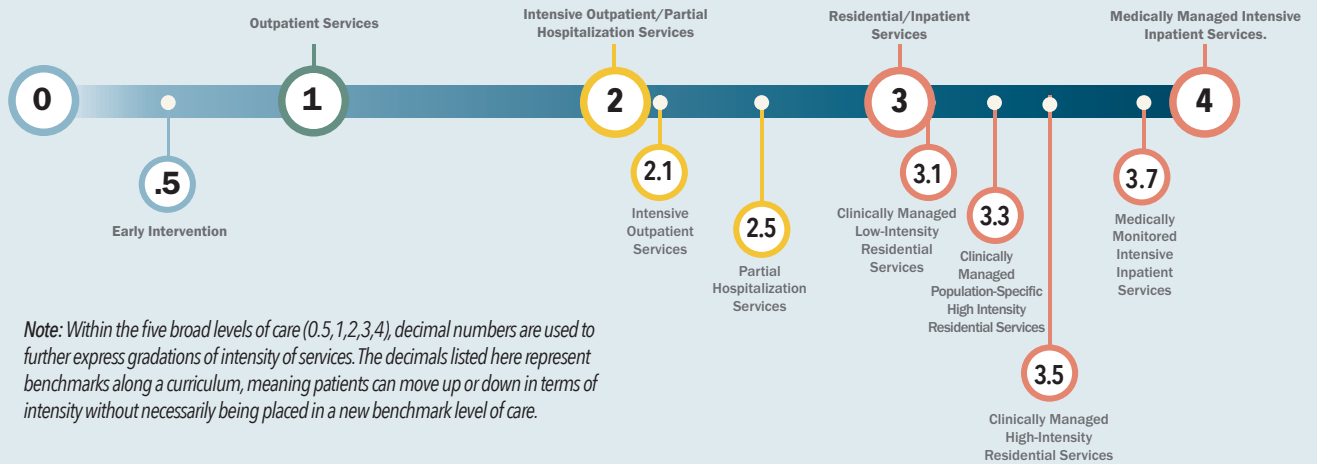


# TREATMENT BEDS VS. RECOVERY BEDS


TREATMENT BEDS		RECOVERY BEDS
		
<p><b>Clinical</b></p> <ul style="list-style-type: none"> <li>• <i>Accepts and bills insurance</i></li> <li>• <i>Physicians, nurses, counselors, case managers on site</i></li> </ul>	<p><b>SETTING</b></p>	<p><b>Home-like setting</b></p> <ul style="list-style-type: none"> <li>• <i>Residents pay rent</i></li> <li>• <i>Clinical services are not offered on site</i></li> </ul>
<p>Short-term and based on medical necessity</p>	<p><b>LENGTH OF STAY</b></p>	<p>Long-term based on an individual's needs/recovery capital</p>
<p>Withdrawal management and stabilization</p>	<p><b>PURPOSE</b></p>	<p>Learning how to sustain recovery outside of a residential treatment facility. Residents are able to work, leave for meetings, etc.</p>
<p>Intense, monitored 24/7, vital checks, more restrictive in rules, unable to leave for work, etc.</p>	<p><b>LEVEL OF SUPERVISION</b></p>	<p>Peer run, or peers along with credentialed staff</p>
<p>Licensed by the state</p>	<p><b>CERTIFICATION/LICENSING</b></p>	<p>Voluntary certification through West Virginia Alliance of Recovery Residences but no state licensing; offers four levels of support (see chart on the following page)</p>
<p>WVU Center for Hope and Healing, Prester's Pinecrest Program, Westbrook's Amity Program</p>	<p><b>EXAMPLES</b></p>	<p>Recovery Point, Life House, Rea of Hope</p>

## Reflecting a Continuum of Care



Note: Within the five broad levels of care (0, 0.5, 1, 2, 3, 4), decimal numbers are used to further express gradations of intensity of services. The decimals listed here represent benchmarks along a curriculum, meaning patients can move up or down in terms of intensity without necessarily being placed in a new benchmark level of care.

Source: <https://www.improvingmipractices.org/resources/encyclopedia/american-society-addiction-medicine-asam-levels-care>

		RECOVERY RESIDENCE LEVELS OF SUPPORT			
		LEVEL 1 Peer-Run	LEVEL 2 Monitored	LEVEL 3 Supervised	LEVEL 4 Service Provider
STANDARDS CRITERIA	ADMINISTRATION	<ul style="list-style-type: none"> <li>• Democratically run</li> <li>• Manual or policies and procedures</li> </ul>	<ul style="list-style-type: none"> <li>• House manager or senior resident</li> <li>• Policy and procedures</li> </ul>	<ul style="list-style-type: none"> <li>• Organizational hierarchy</li> <li>• Administrative oversight for service providers</li> <li>• Policy and procedures</li> <li>• Licensing varies from state to state</li> </ul>	<ul style="list-style-type: none"> <li>• Overseen organizational hierarchy</li> <li>• Clinical and administrative supervision</li> <li>• Policy and procedures</li> <li>• Licensing varies from state to state</li> </ul>
	SERVICES	<ul style="list-style-type: none"> <li>• Drug screening</li> <li>• House meetings</li> <li>• Self-help meetings encouraged</li> </ul>	<ul style="list-style-type: none"> <li>• House rules provide structure</li> <li>• Peer run groups</li> <li>• Drug screening</li> <li>• House meetings</li> <li>• Involvement in self-help and/or treatment services</li> </ul>	<ul style="list-style-type: none"> <li>• Life skills development emphasis</li> <li>• Clinical services utilized in outside community</li> <li>• Service hours provided in-house</li> </ul>	<ul style="list-style-type: none"> <li>• Clinical services and programming are provided in-house</li> <li>• Life skills development</li> </ul>
	RESIDENCES	<ul style="list-style-type: none"> <li>• Generally single family residences</li> </ul>	<ul style="list-style-type: none"> <li>• Primarily single family residences</li> <li>• Possibly apartments or other dwelling types</li> </ul>	<ul style="list-style-type: none"> <li>• Varies – all types of residential settings</li> </ul>	<ul style="list-style-type: none"> <li>• All types – often a step down phase within care continuum of a treatment center</li> <li>• May be a more institutional environment</li> </ul>
	STAFF	<ul style="list-style-type: none"> <li>• No paid positions within the residence</li> <li>• Perhaps an overseeing officer</li> </ul>	<ul style="list-style-type: none"> <li>• At least 1 compensated position</li> </ul>	<ul style="list-style-type: none"> <li>• Facility manager</li> <li>• Certified staff or case managers</li> </ul>	<ul style="list-style-type: none"> <li>• Credentialed staff</li> </ul>

Source: [https://narronline.org/wp-content/uploads/2016/12/NARR\\_levels\\_summary.pdf](https://narronline.org/wp-content/uploads/2016/12/NARR_levels_summary.pdf)