


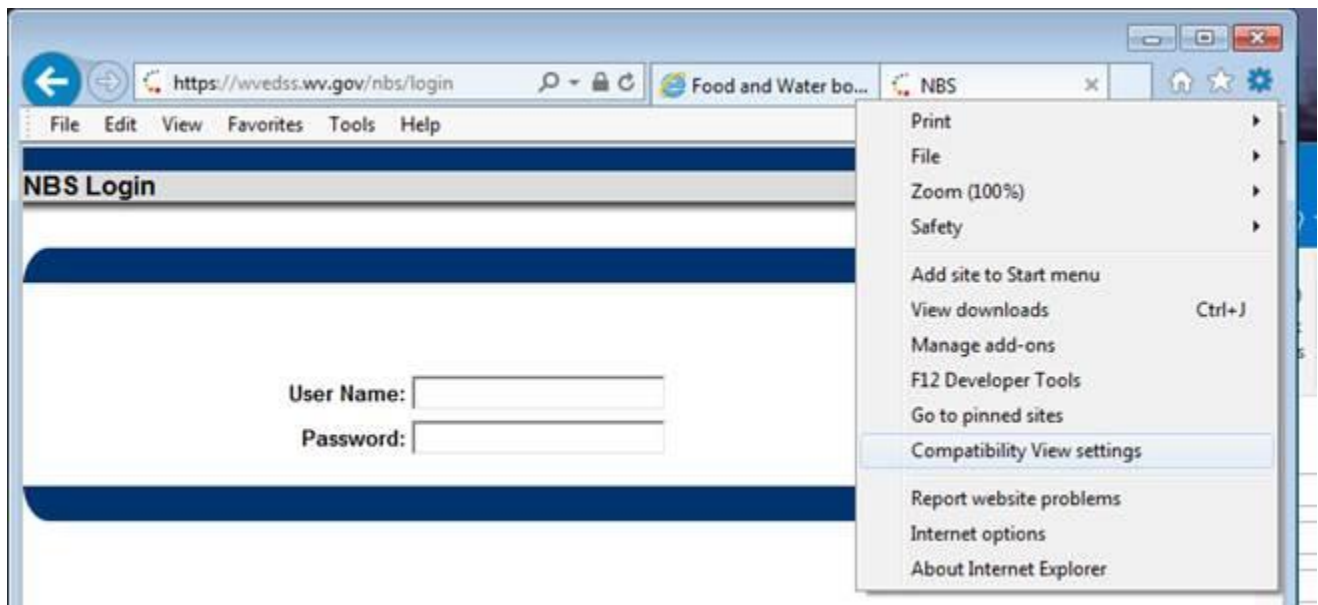
CONFIGURING INTERNET EXPLORER FOR USE WITH WVEDSS 5.0

NOTE: These directions apply to Internet Explorer version 11 and screenshots reflect the layout of that version. Older versions will have the same settings and options, but not in the exact same positions.

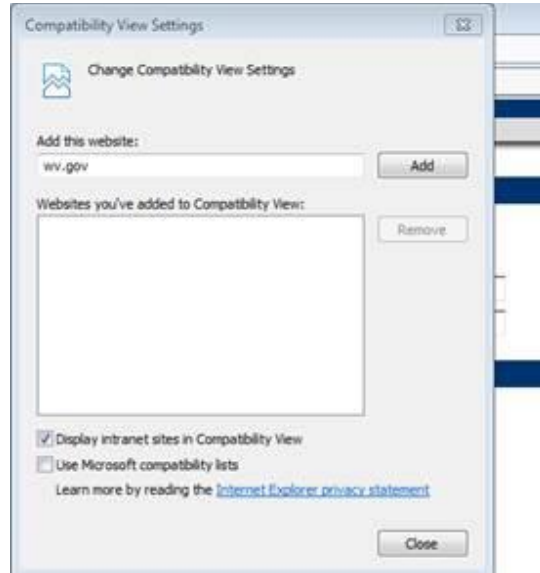
SETTING 1: TAKE INTERNET EXPLORER OUT OF COMPATIBILITY VIEW FOR WVEDSS

STEP 1: Go to <https://wvedss.wv.gov/> in your Internet Explorer browser (note these steps only apply to Internet Explorer, and do not apply to other modern browsers, like Firefox, Chrome, Edge, Safari)


STEP 2: Click on the **Tools icon**  and choose **Compatibility View settings** from the dropdown menu

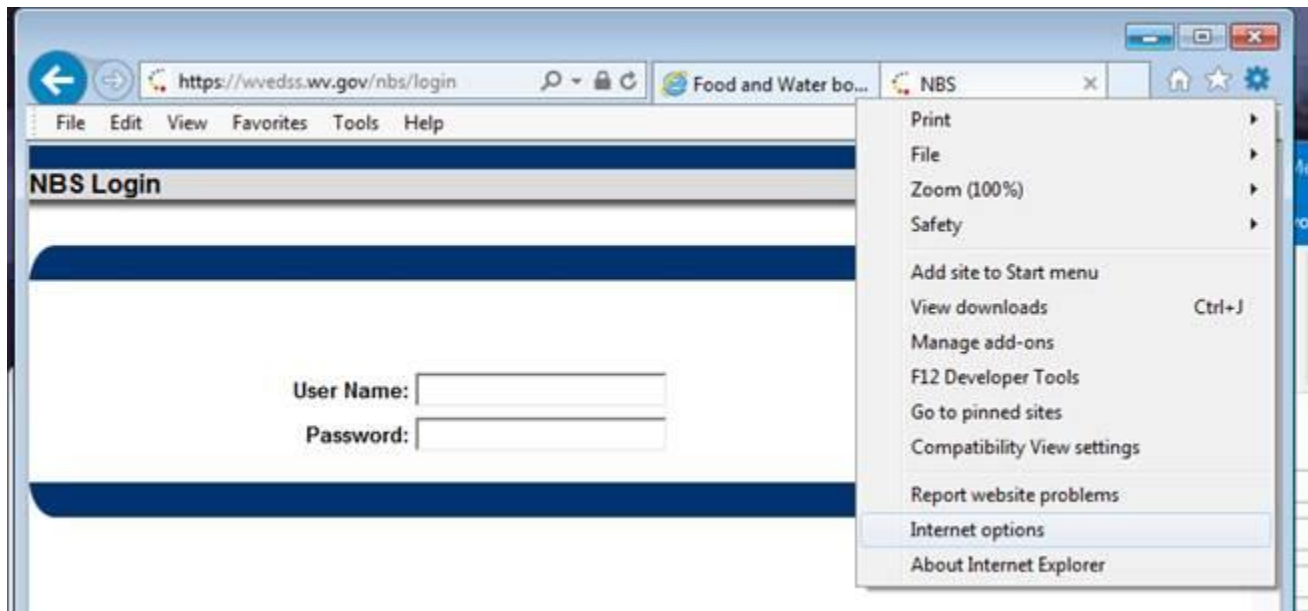


STEP 3: In the menu that pops up, make sure wv.gov **IS NOT** in the big box below the text: “Websites you’ve added to Compatibility View:” If it is, click the **Remove** button and **Close**. If, as in this example, wv.gov is not in the large box, then click **Close**.

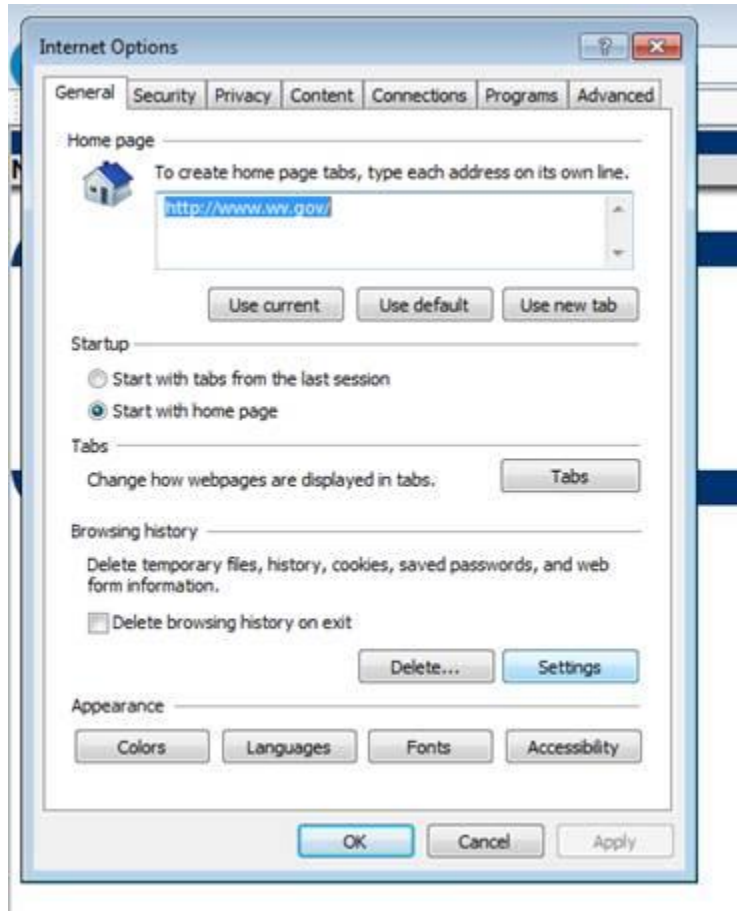


SETTING 2: SET WHEN TO CHECK FOR NEWEST VERSIONS OF A WEB PAGE

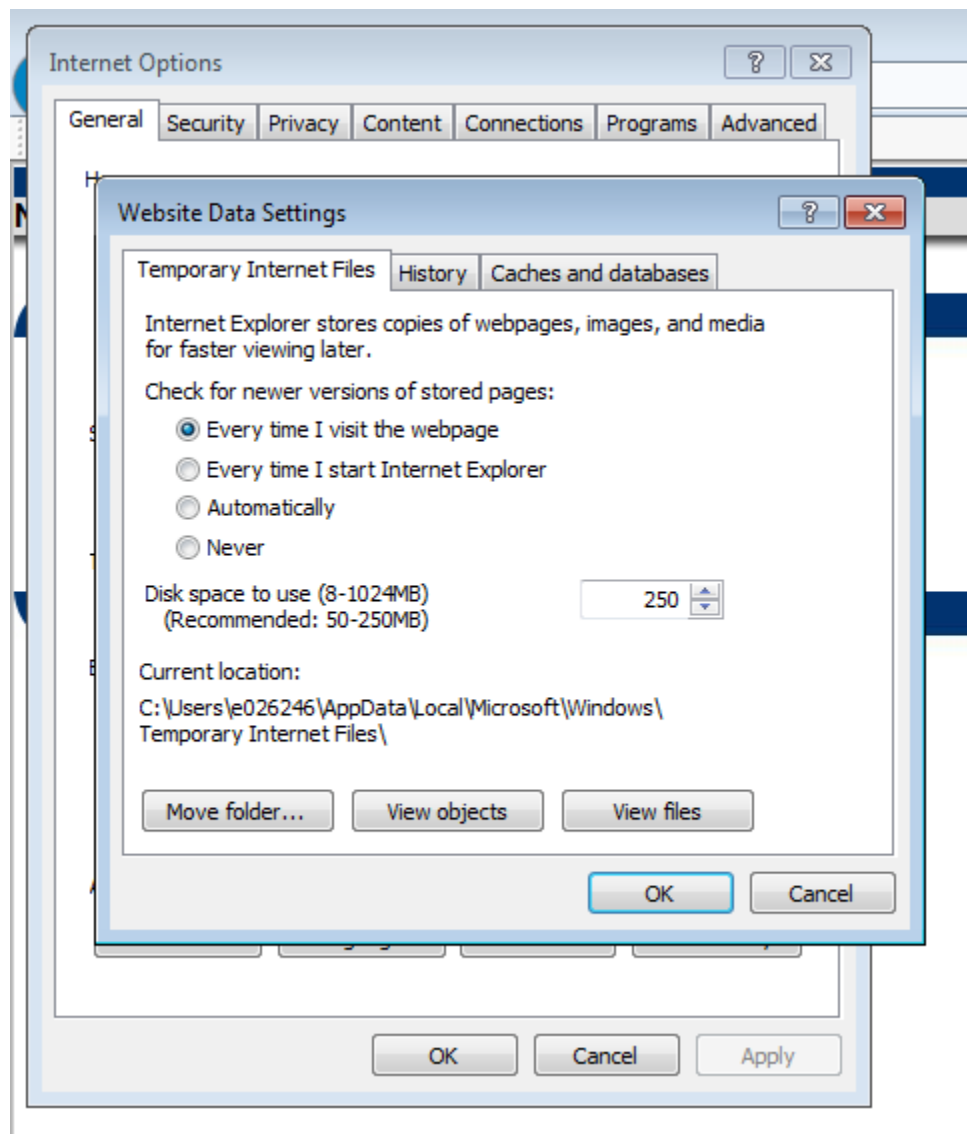
STEP 1: Click on the **Tools icon**  and choose **Internet options** from the dropdown menu



STEP 2: On the popup window, click the **Settings** button under the Browsing history heading on the General tab, as in the image below



STEP 3: Select the option: **“Every time I visit the webpage”** on the new popup and click **Ok**



After you've completed these steps, everything should be set for you to use Internet Explorer with WVEDSS in version 5.0. If you have any questions or need additional help setting up your browser or troubleshooting issues, contact the WVEDSS Help Desk.