



WEST VIRGINIA STATE HEALTH PLAN

● ● ● **CSI Solutions, LLC**
September 7, 2016

Overview

- ⇒ Context
- ⇒ Process
- ⇒ Next Steps



Context

- ➔ The state health plan is mandated legislatively under the West Virginia Health Care Authority, **WV Code §16-2D-5(b)**.
- ➔ There is a preference/requirement by CMS, CDC, HRSA and other grantors for a thoughtful strategic plan guiding alignment of resources.
- ➔ There have been multiple state health planning efforts West Virginia.

CSI Staff

⇒ Christine St. Andre—Founder and Principal

- More than 30 years experience in health care leadership, including as a health system/hospital CEO, with population health and ancillary benefits management and HIT; extensive West Virginia experience

⇒ Roger Chaufournier—Founder and Principal

- More than 30 years experience across all health care sectors, including hospital leadership, at a public population health management company and with quality management; extensive West Virginia experience

⇒ Sunah Hallie—Associate Consultant

- Recent MPH graduate of West Virginia University School of Public Health

⇒ Kristen diDonato—Staff consultant

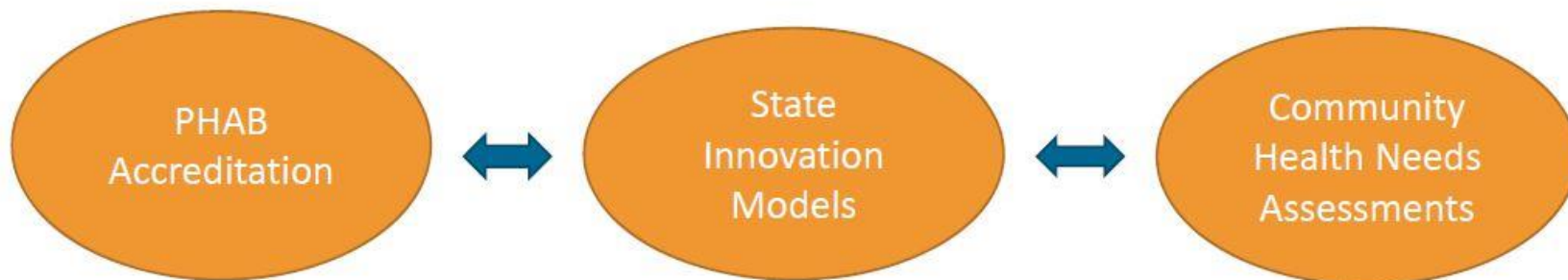
⇒ Joshua Austin—Former SIM Project Coordinator and WVU consultant



Community Engagement and Partner Collaboration

Collaboration is a mutually beneficial and well-defined relationship entered into by two or more organizations to achieve common goals.

PHAB Acronyms and Glossary of Terms Version 1.5 (Dec. 2013).

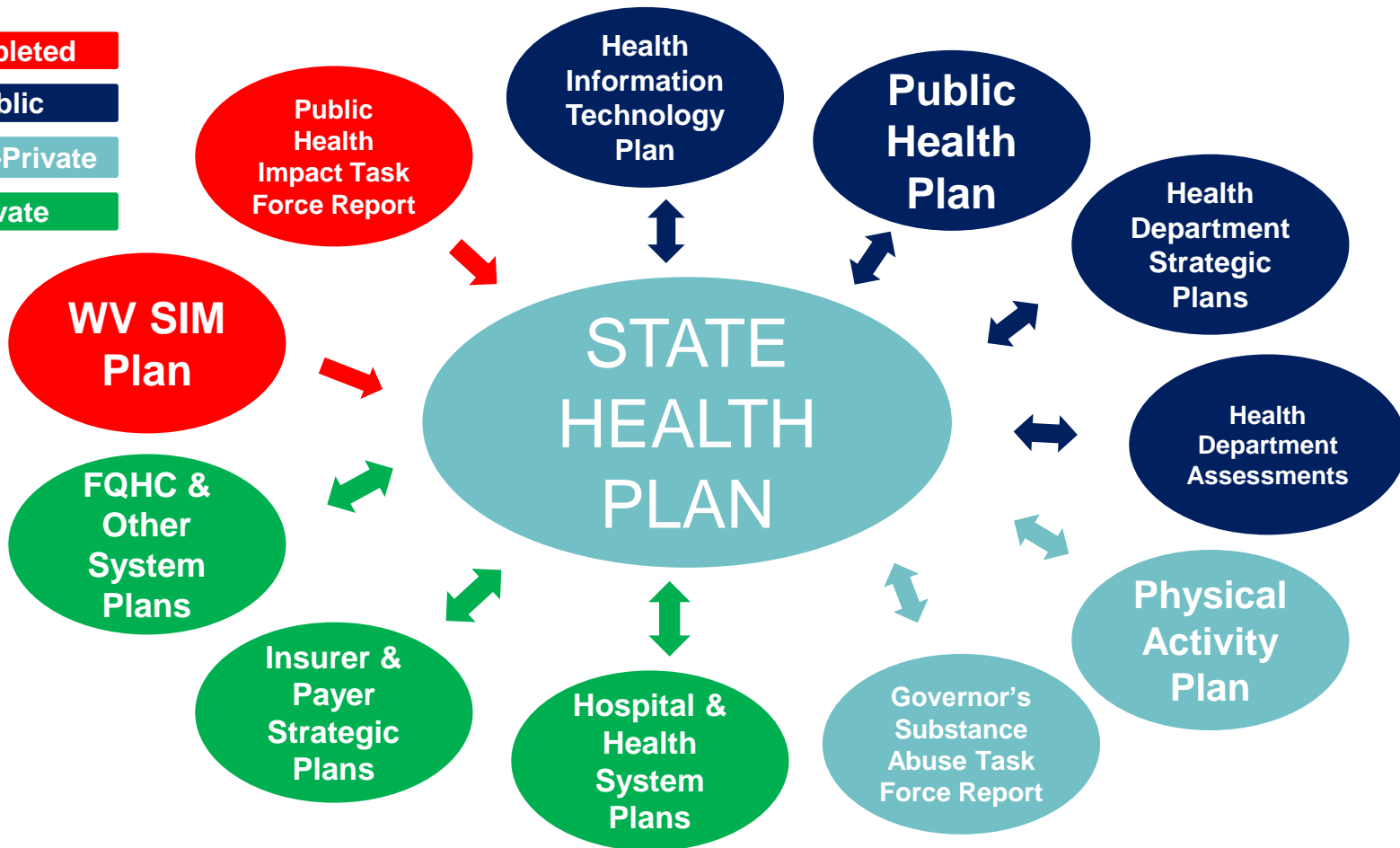


Credit: ASTHO and CDC presentation entitled *Aligning State Innovation Models Plans and Health Assessments to Improve Population Health*



West Virginia's Current Planning Environment

- Completed
- Public
- Public-Private
- Private



Alignment!



SUCCESS

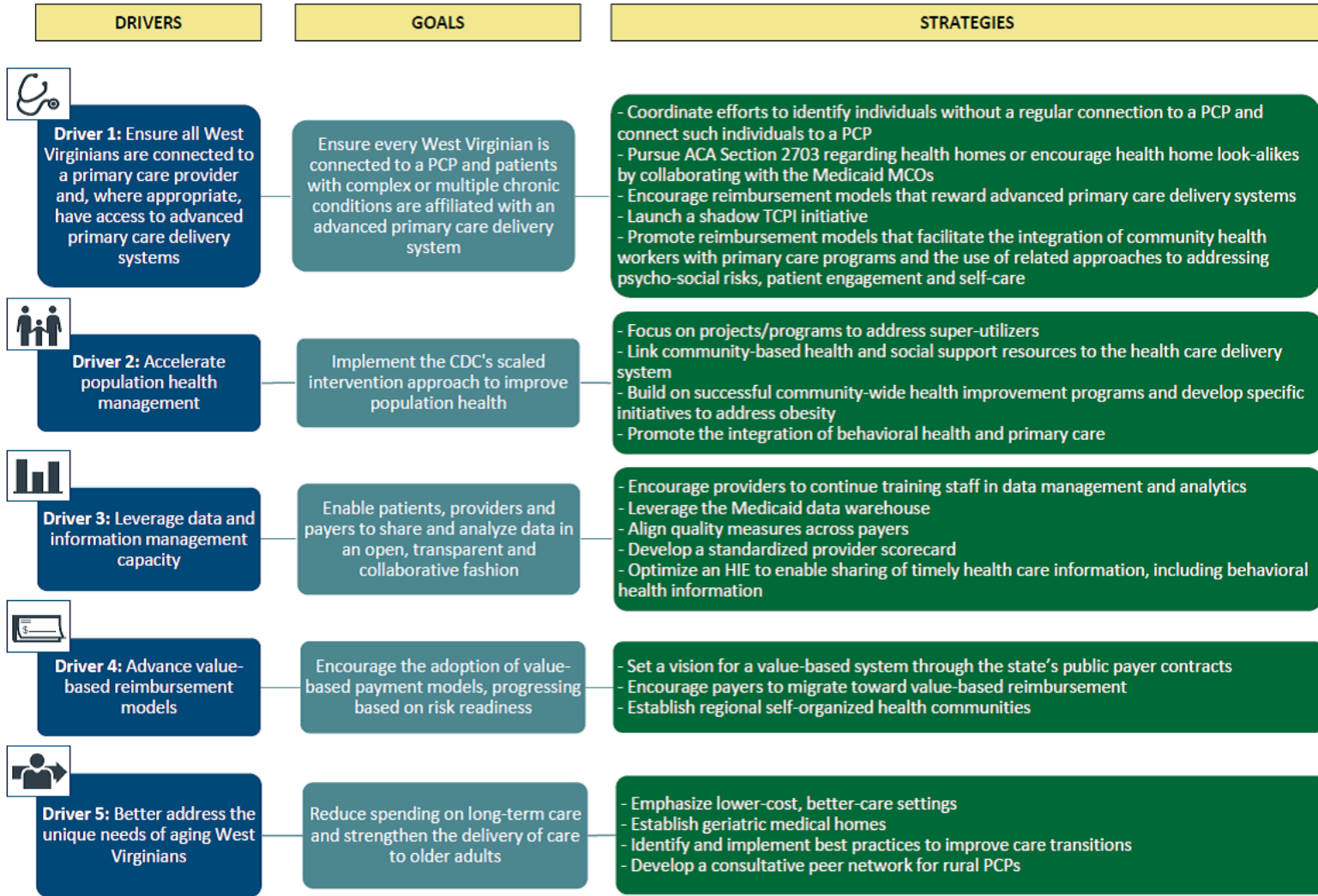


SIM Driver Diagram



VISION

Modernize and transform West Virginia's health care delivery and payment system



Next Steps: State Health Plan Process

- ⇒ Build off of prior work and synthesize plans
- ⇒ Stakeholder engagement and education
Listening sessions in Fall 2016, collaborating with the West Virginia Center for Local Health
- ⇒ Alignment and fingerprinting
During Fall 2016
- ⇒ Plan due by the end of March 2017



Contact: Roger Chaufournier and Joshua Austin

rchaufournier@spreadinnovation.com

jaustin3@hsc.wvu.edu

