



NIMS Refresh

National Engagement Webinar

National Preparedness Directorate / National Integration Center

May 3, 2016



FEMA

Learn more: www.fema.gov/national-incident-management-system

Send us e-mail: FEMA-NIMS@fema.dhs.gov

Agenda

- Housekeeping
- NIMS Refresh Overview and Status
- Refresh by Component
 - Fundamentals and Concepts
 - Resource Management
 - Management and Coordination
 - Communications and Information Management
- Next Steps
- Discussion

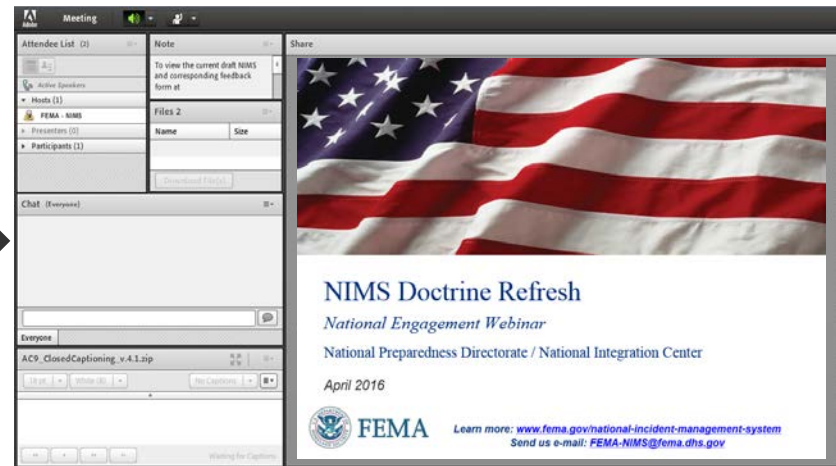


FEMA

Housekeeping

- Audio issues? Press *0 to connect with a FEMA operator
- During the presentation portion of the webinar, participant lines will be placed on mute to limit background noise.
- Questions? Use the Adobe Connect chat function
 - Click on “Everyone” to send to the whole group
 - Click on “Host” to send only to the speakers

Chat function →



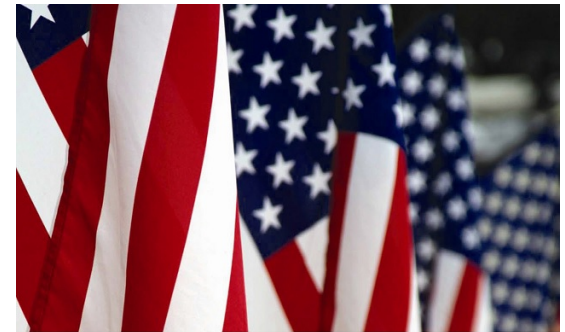
FEMA

Learn more: www.fema.gov/national-incident-management-system

Send us e-mail: FEMA-NIMS@fema.dhs.gov

National Incident Management System (NIMS) Refresh—Overview

- NIMS provides a consistent and common nationwide approach and vocabulary to enable the whole community to work together seamlessly and manage all threats and hazards.
- NIMS applies to all incidents, regardless of cause, size, location or complexity.



NATIONAL INCIDENT
MANAGEMENT SYSTEM



Homeland
Security



FEMA

Learn more: www.fema.gov/national-incident-management-system

Send us e-mail: FEMA-NIMS@fema.dhs.gov

NIMS Refresh—Status

- FEMA is leading a whole community effort to review and refresh NIMS.
- The draft of the refreshed NIMS retains key concepts and principles from the 2004 and 2008 versions, while incorporating policy updates and lessons learned from exercises and real world events.
- The National Engagement Period provides an opportunity for interested parties to comment on the draft, so that it reflects the collective expertise and experience of the whole community.
- The current draft is available on the FEMA website for public comment until 5:00 pm EDT on May 9, 2016 at www.fema.gov/national-incident-management-system/national-engagement.



FEMA

Learn more: www.fema.gov/national-incident-management-system

Send us e-mail: FEMA-NIMS@fema.dhs.gov

NIMS Refresh—Key Changes

- The purpose of the NIMS refresh is to strengthen guidance for effective incident management by:
 - Reflecting and incorporating lessons learned from exercises and real world incidents and policy updates;
 - Reflecting progress in resource typing and credentialing;
 - Clarifying that NIMS is more than just the Incident Command System (ICS) and that it applies to stakeholders across all five mission areas (Prevention, Protection, Mitigation, Response and Recovery);
 - Providing a common structure and activation levels for operations and coordination centers;
 - Explaining the relationship among ICS, the Center Management System (CMS) and Multiagency Coordination Groups (MAC Groups); and
 - Enhancing guidance on information management processes.



FEMA

Learn more: www.fema.gov/national-incident-management-system

Send us e-mail: FEMA-NIMS@fema.dhs.gov

NIMS Document Organization

2008 NIMS Organization

- Introduction
- Preparedness
- Communications and Information Management
- Resource Management
- Command and Management
- Ongoing Management and Maintenance
- Appendices
 - Resource Typing
 - ICS

Refreshed NIMS Organization

- Fundamentals and Concepts of NIMS
- Resource Management
- Management and Coordination
 - ICS
 - Center Management System (CMS)
 - Multiagency Coordination Group
 - Joint Information System (JIS)
 - Interconnectivity of NIMS Management and Coordination Structures
- Communications and Information Management
- Conclusion
- ICS Appendix
- CMS Appendix



FEMA

Learn more: www.fema.gov/national-incident-management-system

Send us e-mail: FEMA-NIMS@fema.dhs.gov

Fundamentals and Concepts

- Includes:
 - High-level summary of how NIMS can be used
 - Brief history of the doctrine
 - Description of the NIMS guiding principles:
 - Flexibility
 - Standardization
 - Unity of Effort
 - Overview of the NIMS components

Unity of Effort

Unity of effort means coordinating activities among various organizational representatives to achieve common objectives. Unity of effort enables organizations with jurisdictional authority or functional responsibilities to support each other while allowing each participating agency to maintain its own authority and accountability.



Resource Management

- Describes standard mechanisms for collaboration and coordination across jurisdictions and organizations to systematically manage resources, including personnel, equipment, teams and facilities.
- Reflects progress in resource typing and credentialing since 2008.
- Builds a foundation for the development of a national qualification system.



FEMA

Learn more: www.fema.gov/national-incident-management-system

Send us e-mail: FEMA-NIMS@fema.dhs.gov

Management and Coordination

- Renamed to better reflect the variety of applications of the component.
- Describes four overarching areas of responsibility for effective incident management, and provides guidance for each area:
 - **Incident Command System (ICS)** guidance applies to tactical activities to stabilize an incident, save lives, and protect property and the environment;
 - **Center Management System (CMS)** guidance applies to incident support activities including strategic coordination, resource acquisition and information gathering;
 - **Multiagency Coordination Group (MAC Group)** guidance applies to senior level decision making; and
 - **Joint Information System (JIS)** guidance applies to activities surrounding outreach and communication with the media and public.



FEMA

Learn more: www.fema.gov/national-incident-management-system

Send us e-mail: FEMA-NIMS@fema.dhs.gov

Management and Coordination, cont.

- Describes high-level functions of each ICS and Center Management System (CMS) section; more detailed descriptions of associated units/groups are provided in the appendices.
- Provides CMS guidance for operations/coordination centers.
- Clarifies multiagency coordination content to focus on MAC Groups.
- Does not propose changes to ICS.
- Incorporates the Intelligence and Investigations Section, as defined in the *NIMS Intelligence/Investigations Function Guidance and Field Operations Guide*.

Which Management Structure Applies?

- ICS/Unified Command at the ***incident level***
- The Center Management System at the ***operations/coordination level***
- MAC Groups at the ***policy/executive level***
- JIS to coordinate ***public information***

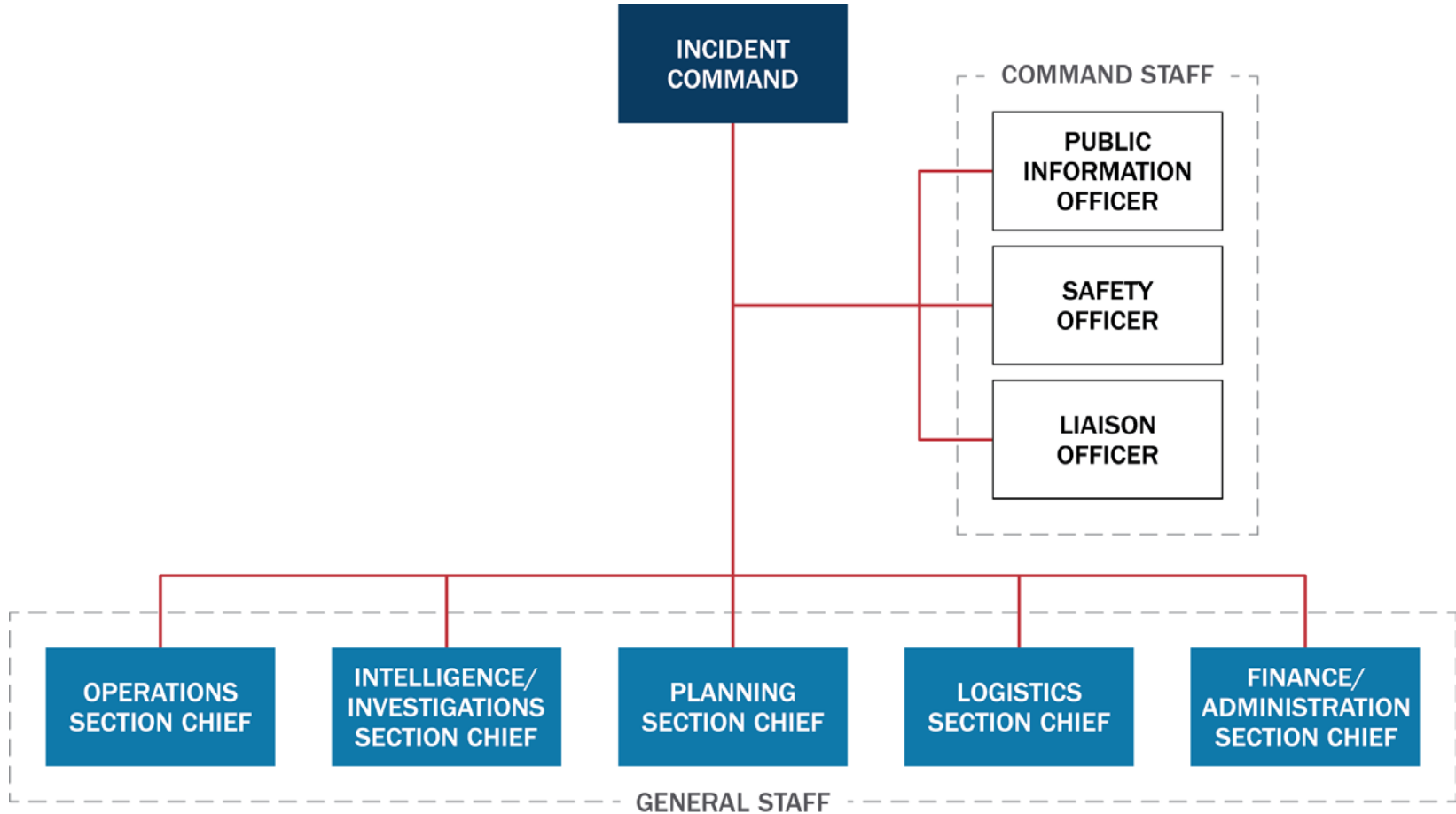


FEMA

Learn more: www.fema.gov/national-incident-management-system

Send us e-mail: FEMA-NIMS@fema.dhs.gov

Incident Command System Structure



FEMA

Learn more: www.fema.gov/national-incident-management-system

Send us e-mail: FEMA-NIMS@fema.dhs.gov

Center Management System (CMS)

- Describes common functions, organizational structure and terminology for staff in operation/coordination centers, including Emergency Operations Centers (EOC).
- Enables the integration and sharing of personnel among operations and coordination centers nationwide, at all levels of government.
- Enables overwhelmed EOCs across the nation to ask for the support they need through mutual aid, and have confidence that the personnel they receive will be experienced, and qualified to work in, an EOC environment.
- Developed with input from EOC leaders across the nation.

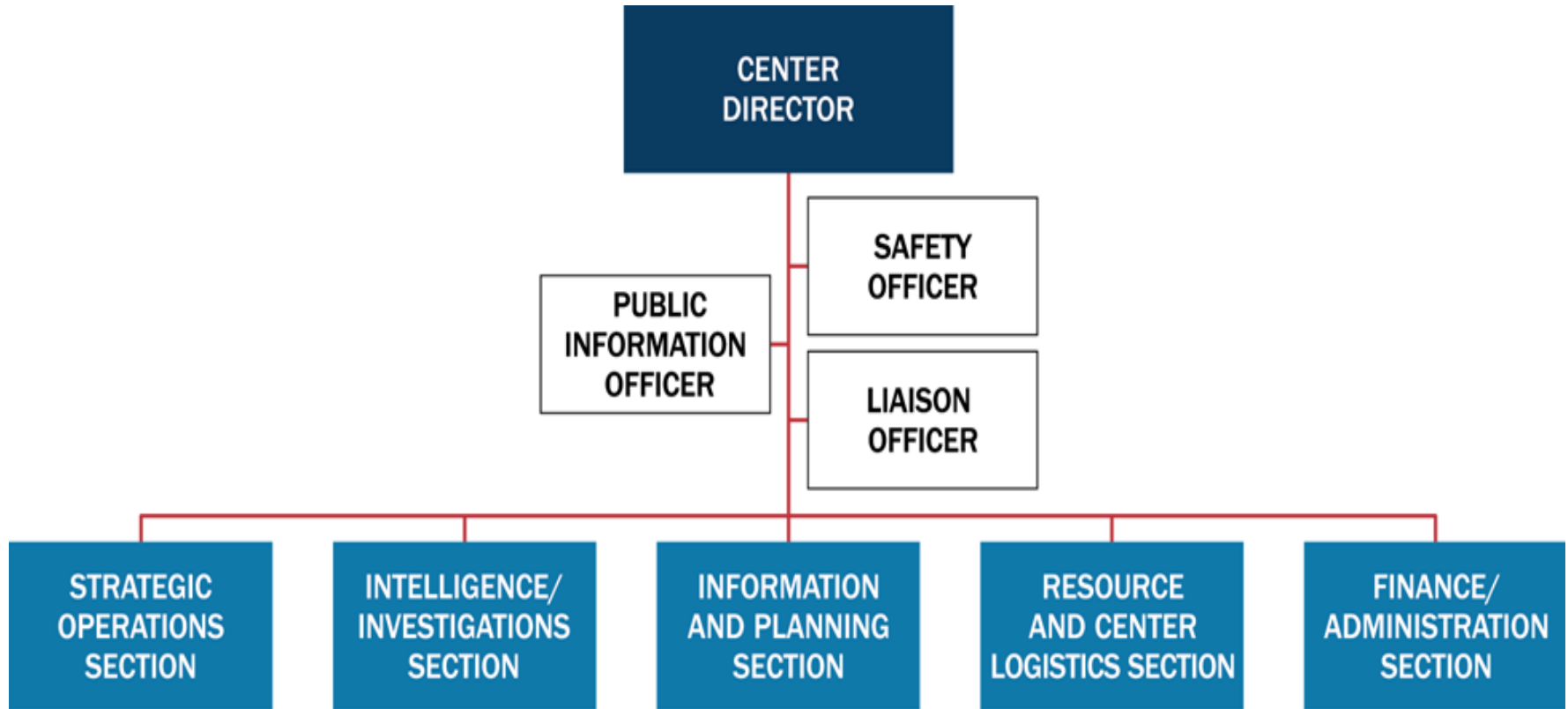


FEMA

Learn more: www.fema.gov/national-incident-management-system

Send us e-mail: FEMA-NIMS@fema.dhs.gov

CMS Top-Level Management Structure



FEMA

Learn more: www.fema.gov/national-incident-management-system

Send us e-mail: FEMA-NIMS@fema.dhs.gov

CMS Section Responsibilities

- Strategic Operations
 - Coordinates with personnel at the incident to identify and address unmet resource needs
- Intelligence/Investigations
 - Provides a framework to integrate intelligence and information collection, analysis and sharing, as well as investigations
- Information and Planning
 - Manages situational awareness efforts and develops incident-related plans
- Resource and Center Logistics
 - Sources and procures resources, including for center staff
- Finance/Administration
 - Manages all financial, administrative and cost analysis aspects

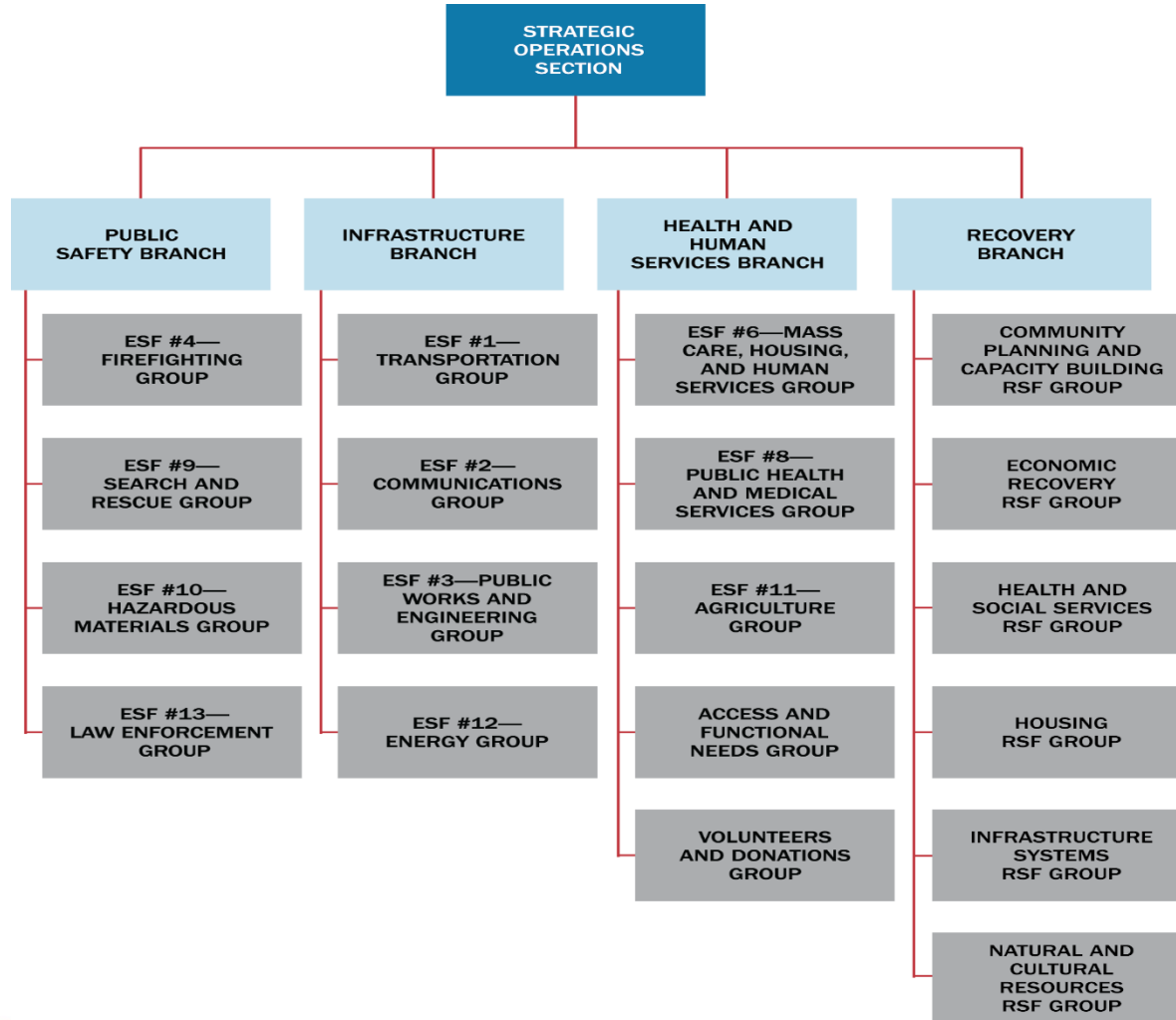


FEMA

Learn more: www.fema.gov/national-incident-management-system

Send us e-mail: FEMA-NIMS@fema.dhs.gov

Strategic Operations Section, by Function

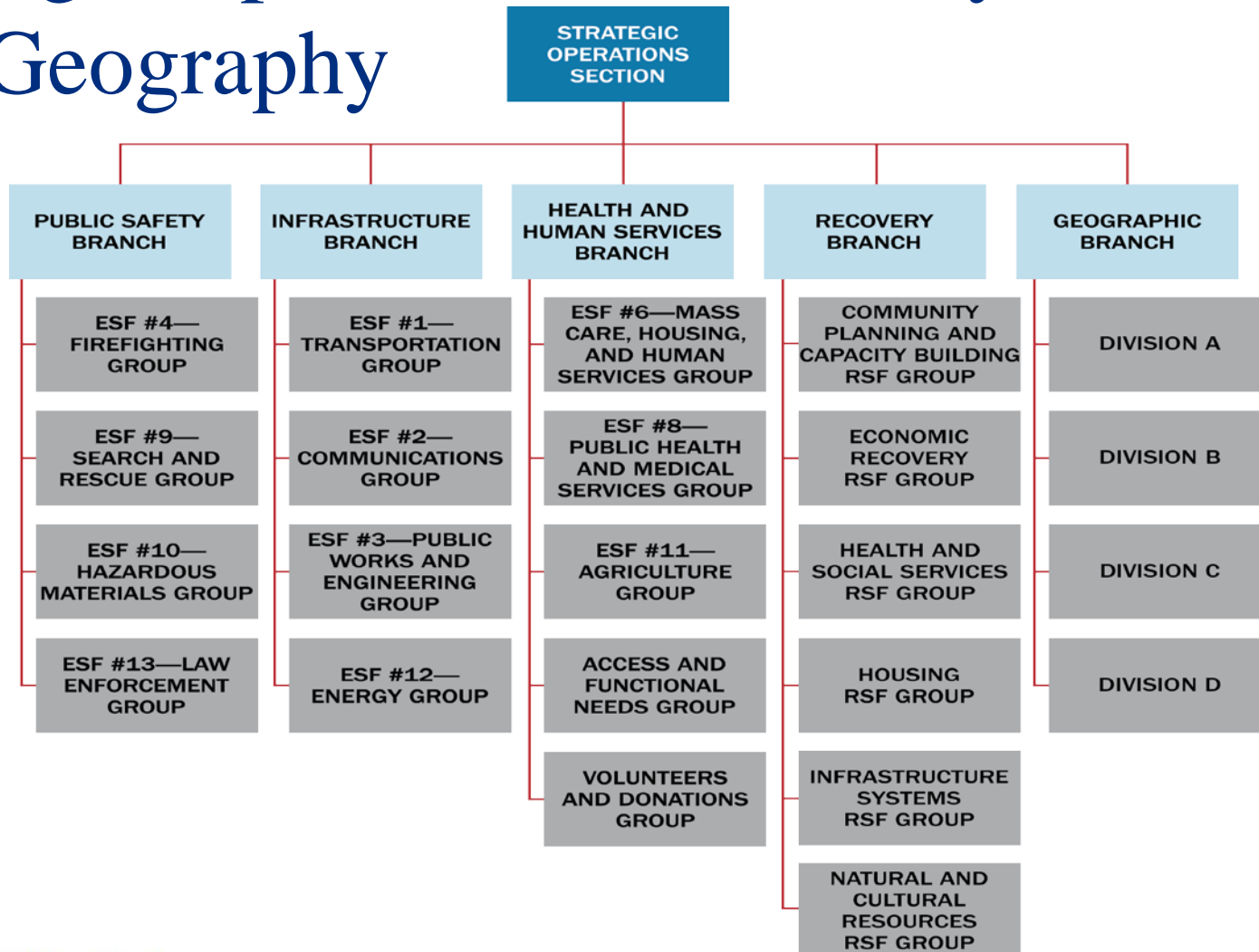


FEMA

Learn more: www.fema.gov/national-incident-management-system

Send us e-mail: FEMA-NIMS@fema.dhs.gov

Strategic Operations Section, by Function and Geography

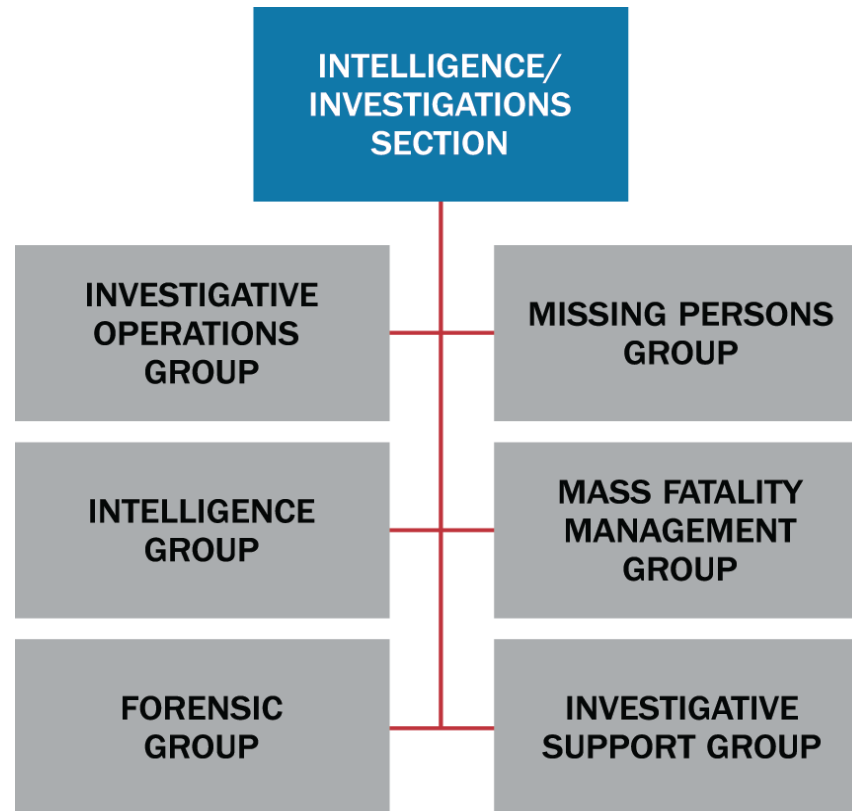


FEMA

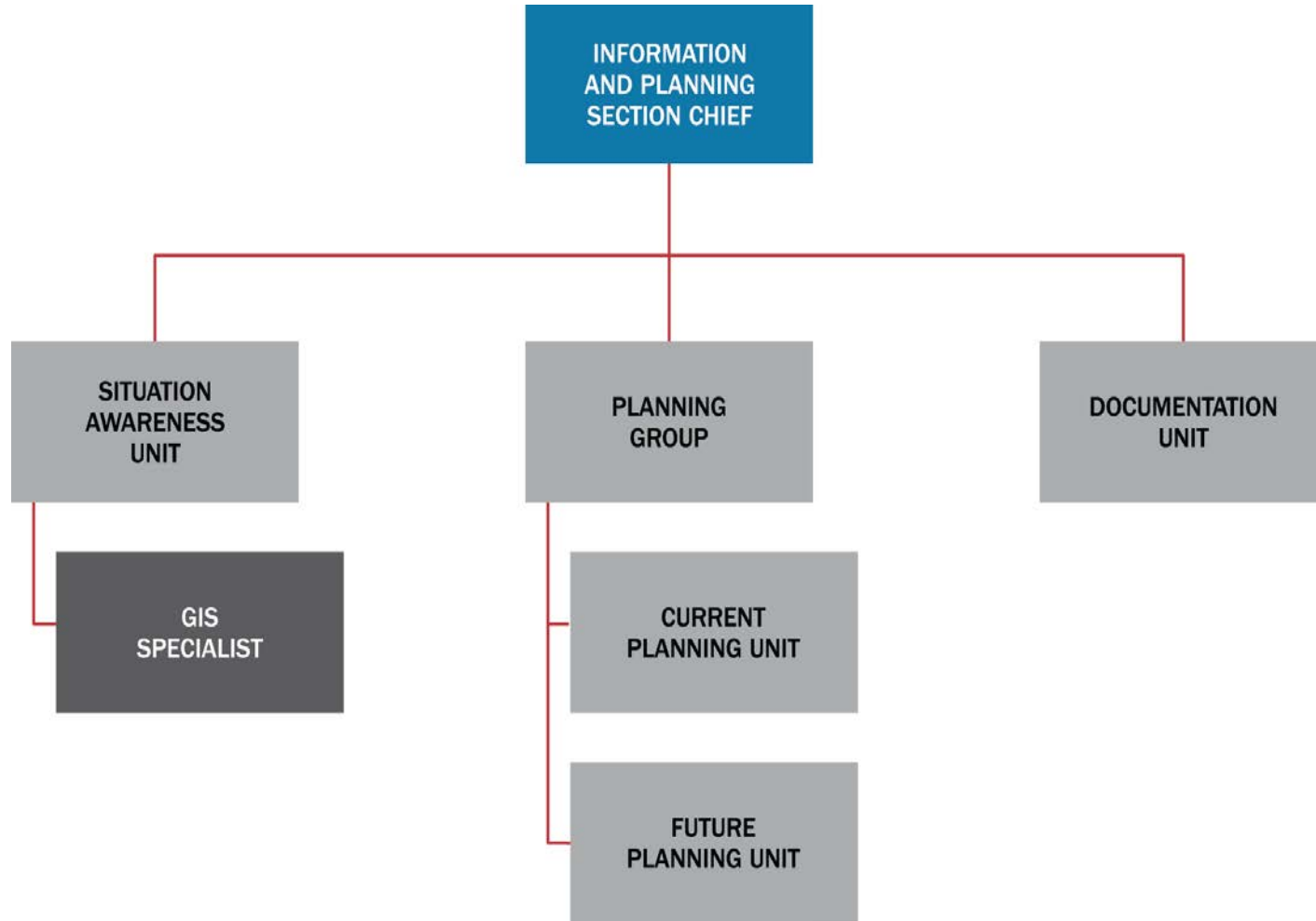
Learn more: www.fema.gov/national-incident-management-system

Send us e-mail: FEMA-NIMS@fema.dhs.gov

Intelligence/Investigations Section



Information and Planning Section

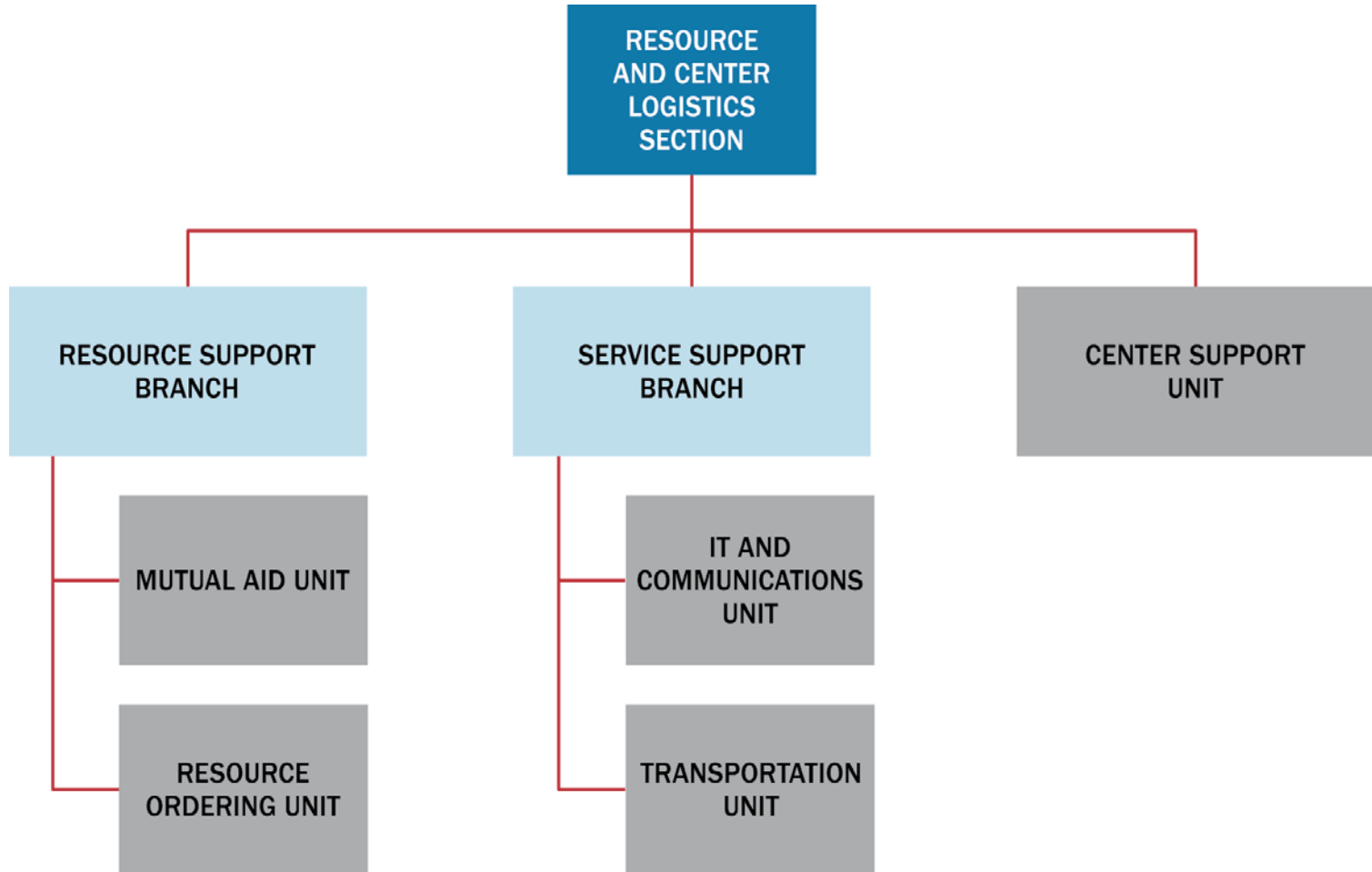


FEMA

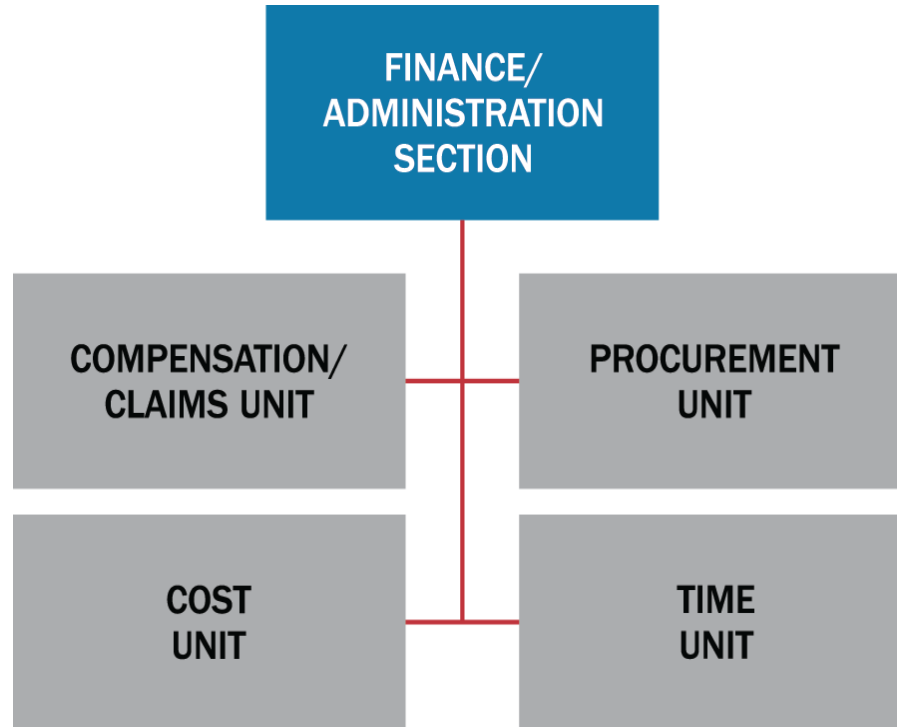
Learn more: www.fema.gov/national-incident-management-system

Send us e-mail: FEMA-NIMS@fema.dhs.gov

Resource and Center Logistics Section



Finance/Administration Section

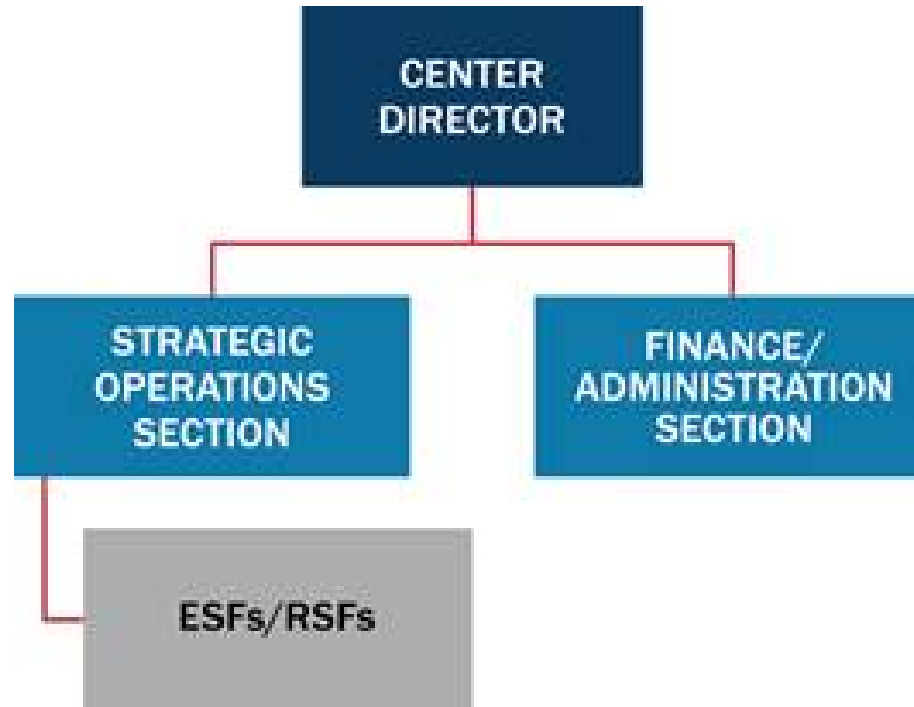


FEMA

Learn more: www.fema.gov/national-incident-management-system

Send us e-mail: FEMA-NIMS@fema.dhs.gov

Example CMS Staffing in a Small EOC



CMS Activation Levels

Activation Level		Description	Staffing
4	Normal Operations/ Steady State	<ul style="list-style-type: none"> • Routine monitoring of situation • No event or incident anticipated 	<ul style="list-style-type: none"> • Center not staffed; possibly not configured for operations
3	Enhanced Steady-State	<ul style="list-style-type: none"> • A situation or threat has developed that requires enhanced monitoring and coordination between jurisdictions and agencies 	<ul style="list-style-type: none"> • Center is staffed with a few personnel focused on situational awareness
2	Partial	<ul style="list-style-type: none"> • A situation or threat has developed that requires coordination extending beyond the normal workday and that requires 24/7 monitoring 	<ul style="list-style-type: none"> • Center is partially staffed; limited or partial liaison support (based on the needs of the incident)
1	Full	<ul style="list-style-type: none"> • Incident of such magnitude that it requires or may require extensive response and recovery efforts and significant resources • A situation or threat has developed that requires 24/7 coordination, monitoring, and support 	<ul style="list-style-type: none"> • All General Staff positions activated; including applicable liaison positions • Operations being conducted on a 24 hour basis



FEMA

Learn more: www.fema.gov/national-incident-management-system

Send us e-mail: FEMA-NIMS@fema.dhs.gov

National Qualification System

- Coming in 2016!
- Will supplement NIMS Resource Management.
- Participation will be optional.
- Will enable effective and efficient sharing of personnel resources for mutual aid.
- Will enable the alignment of individual qualification systems to baseline policies and processes and enable positions to meet standardized qualifications.
- Stay informed! Sign up for NIMS Alerts at www.fema.gov/national-incident-management-system-alerts.



FEMA

Learn more: www.fema.gov/national-incident-management-system

Send us e-mail: FEMA-NIMS@fema.dhs.gov

Communications and Information Management

- Enhances information management processes by:
 - Expanding guidance on data collection plans
 - Integrating social media
 - Highlighting the use of geographic information systems (GIS)



FEMA

Learn more: www.fema.gov/national-incident-management-system

Send us e-mail: FEMA-NIMS@fema.dhs.gov

Release and Implementation

- Following national engagement, FEMA will review all comments received and update the draft as appropriate.
- Upon approval by the FEMA Administrator and DHS Secretary, the refreshed NIMS will be published and announced through a NIMS Alert.
- To sign up for NIMS Alerts, visit www.fema.gov/national-incident-management-system-alerts.
- The associated NIMS guides, training and other supporting material will be updated to align to the refreshed NIMS.



FEMA

Learn more: www.fema.gov/national-incident-management-system

Send us e-mail: FEMA-NIMS@fema.dhs.gov

Continue your Involvement

- Learn more about NIMS and read the latest updates...
 - Visit www.fema.gov/national-incident-management-system.
- Provide feedback on the draft NIMS...
 - All comments are welcome!
 - FEMA is particularly eager to receive feedback on the:
 - New guidance on the Center Management System
 - Definition of Incident Management Assistance Teams
 - Expanded content on information management
 - The comment period closes Monday, May 9, 2016 at 5:00 p.m. EDT.
 - Visit www.fema.gov/national-incident-management-system/national-engagement to download the draft document and feedback form.
 - Submit comments via email to FEMA-NIMS@fema.dhs.gov using the provided feedback form.



FEMA

Learn more: www.fema.gov/national-incident-management-system

Send us e-mail: FEMA-NIMS@fema.dhs.gov

Questions?



Have Questions or Side Conversations?

- Use the Connect chat function.
- E-mail FEMA-NIMS@fema.dhs.gov.



FEMA

Thank you for your participation!

To download the draft document and feedback form, please visit www.fema.gov/national-incident-management-system/national-engagement.



FEMA

Learn more: www.fema.gov/national-incident-management-system

Send us e-mail: FEMA-NIMS@fema.dhs.gov