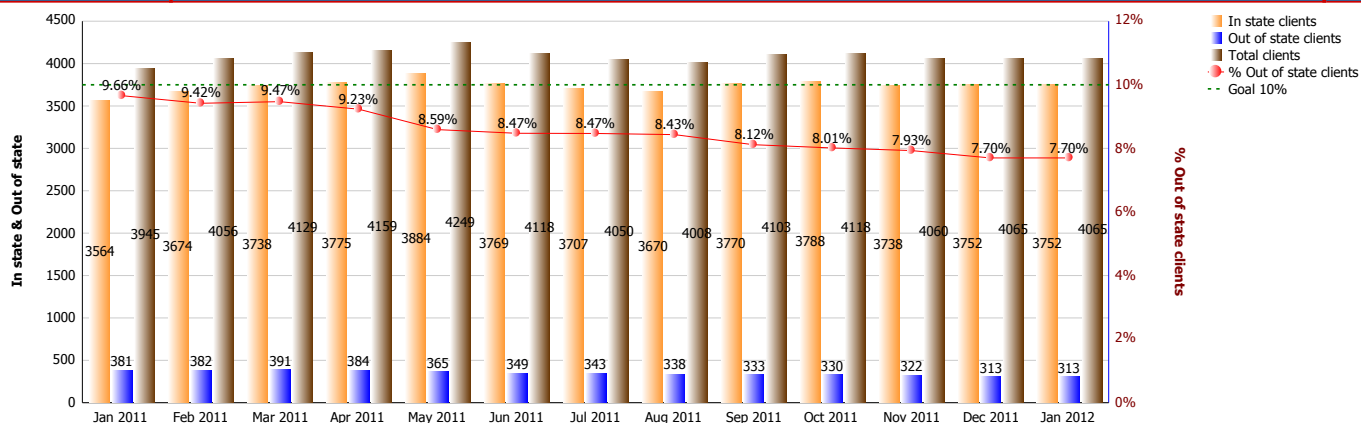


## Foster Care Placement Report



	Jan 2011	Feb 2011	Mar 2011	Apr 2011	May 2011	Jun 2011	Jul 2011	Aug 2011	Sep 2011	Oct 2011	Nov 2011	Dec 2011	Jan 2012
<b>In state clients</b>	3564	3674	3738	3775	3884	3769	3707	3670	3770	3788	3738	3752	3752
<b>Out of state clients</b>	381	382	391	384	365	349	343	338	333	330	322	313	313
<b>Total clients</b>	3945	4056	4129	4159	4249	4118	4050	4008	4103	4118	4060	4065	4065
<b>% Out of state clients</b>	9.66%	9.42%	9.47%	9.23%	8.59%	8.47%	8.47%	8.43%	8.12%	8.01%	7.93%	7.70%	7.70%

### In state and Out of state clients by Provider type for the month of Jan 2012

Provider Type	In state clients	Out of state clients	Total clients	% Out of state clients
Agency Emergency Shelter	137	0	137	0.00%
Agency Foster Family Care	1048	34	1082	3.14%
Department Adoptive Home	163	12	175	6.86%
Detention Centers	32	0	32	0.00%
Group Residential Care	694	172	866	19.86%
Kinship/Relative	587	16	603	2.65%
Medical Hospital	2	3	5	60.00%
Psychiatric Facilities (Long Term)	62	66	128	51.56%
Psychiatric Hospital (Short Term)	23	0	23	0.00%
School For Children with Special Needs	1	0	1	0.00%
Specialized Family Care (Medley)	47	0	47	0.00%
Specialized Family Care Home-(Medley)	10	0	10	0.00%
Therapeutic Foster Care	906	10	916	1.09%
Transitional Living Client	40	0	40	0.00%
<b>Summary</b>	<b>3752</b>	<b>313</b>	<b>4065</b>	<b>7.70%</b>