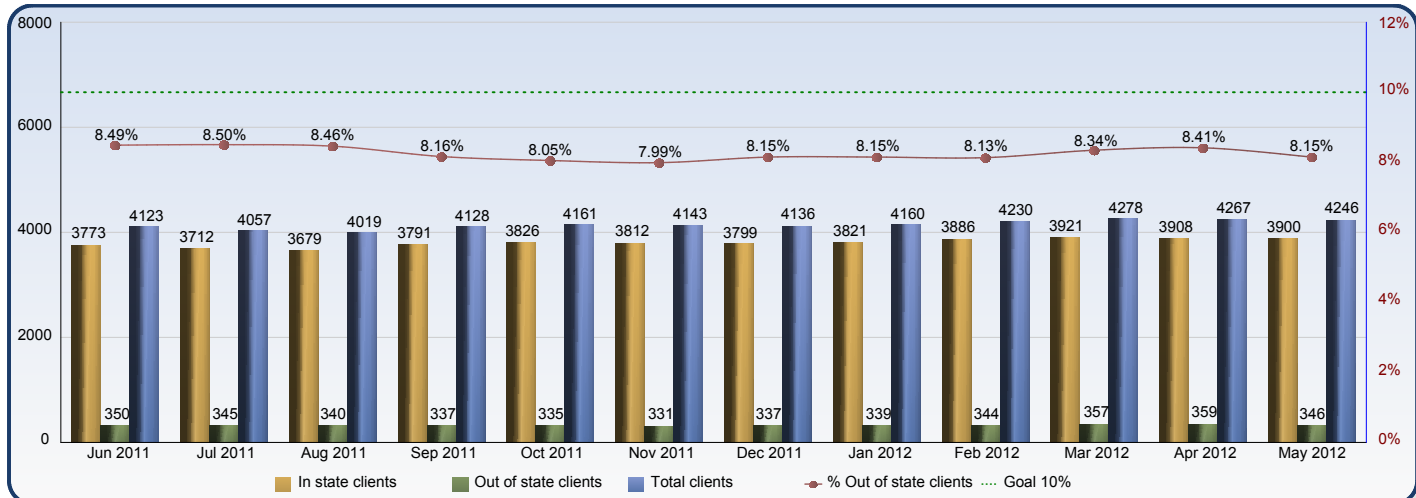




Foster Care Placements Report



	Jun 2011	Jul 2011	Aug 2011	Sep 2011	Oct 2011	Nov 2011	Dec 2011	Jan 2012	Feb 2012	Mar 2012	Apr 2012	May 2012
In state clients	3773	3712	3679	3791	3826	3812	3799	3821	3886	3921	3908	3900
Out of state clients	350	345	340	337	335	331	337	339	344	357	359	346
Total clients	4123	4057	4019	4128	4161	4143	4136	4160	4230	4278	4267	4246
% Out of state clients	8.49%	8.50%	8.46%	8.16%	8.05%	7.99%	8.15%	8.15%	8.13%	8.35%	8.41%	8.15%

In state and Out of state clients by Provider type for the month of May 2012

Provider Type	In state clients	Out of state clients	Total clients	% Out of state clients
Agency Emergency Shelter	158	0	158	0.00%
Agency Foster Family Care	1140	30	1170	2.56%
Department Adoptive Home	149	23	172	13.37%
Detention Centers	42	0	42	0.00%
Group Residential Care	736	179	915	19.56%
Kinship/Relative	613	27	640	4.22%
Medical Hospital	1	3	4	75.00%
Psychiatric Facilities (Long Term)	64	76	140	54.29%
Psychiatric Hospital (Short Term)	27	1	28	3.57%
Specialized Family Care (Medley)	42	0	42	0.00%
Specialized Family Care Home-(Medley)	9	0	9	0.00%
Therapeutic Foster Care	887	7	894	0.78%
Transitional Living Client	32	0	32	0.00%
Summary	3900	346	4246	8.15%