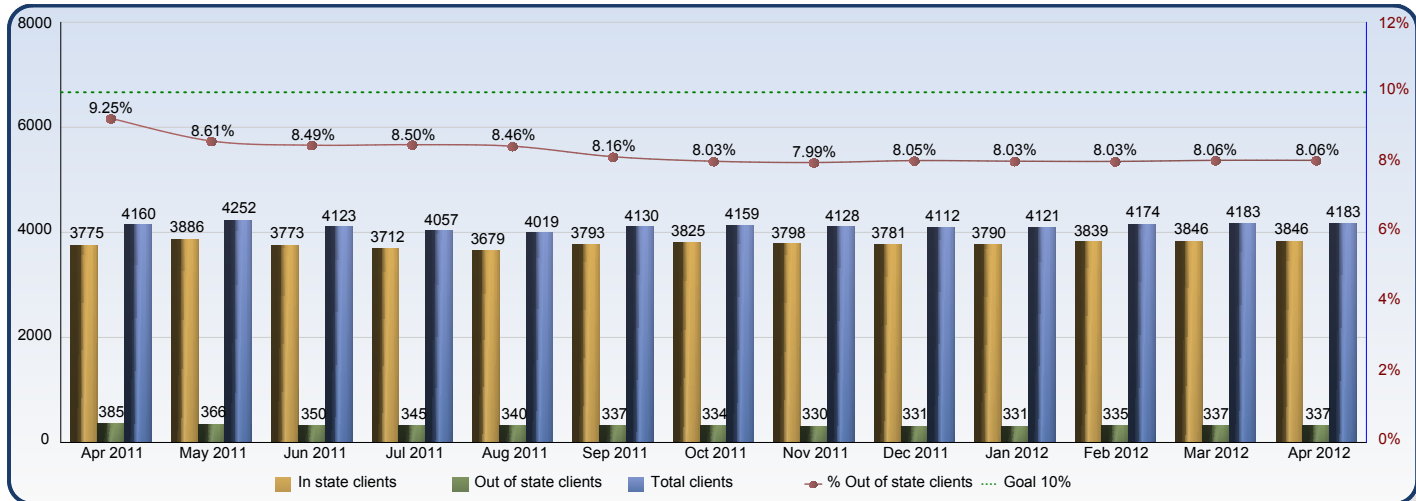




## Foster Care Placements Report



	Apr 2011	May 2011	Jun 2011	Jul 2011	Aug 2011	Sep 2011	Oct 2011	Nov 2011	Dec 2011	Jan 2012	Feb 2012	Mar 2012	Apr 2012
<b>In state clients</b>	3775	3886	3773	3712	3679	3793	3825	3798	3781	3790	3839	3846	3846
<b>Out of state clients</b>	385	366	350	345	340	337	334	330	331	331	335	337	337
<b>Total clients</b>	4160	4252	4123	4057	4019	4130	4159	4128	4112	4121	4174	4183	4183
<b>% Out of state clients</b>	9.25%	8.61%	8.49%	8.50%	8.46%	8.16%	8.03%	7.99%	8.05%	8.03%	8.03%	8.06%	8.06%

### In state and Out of state clients by Provider type for the month of Apr 2012

Provider Type	In state clients	Out of state clients	Total clients	% Out of state clients
Agency Emergency Shelter	150	0	150	0.00%
Agency Foster Family Care	1118	26	1144	2.27%
Department Adoptive Home	168	21	189	11.11%
Detention Centers	36	0	36	0.00%
Group Residential Care	718	181	899	20.13%
Kinship/Relative	584	26	610	4.26%
Medical Hospital	3	3	6	50.00%
Psychiatric Facilities (Long Term)	60	72	132	54.55%
Psychiatric Hospital (Short Term)	22	0	22	0.00%
Specialized Family Care (Medley)	43	0	43	0.00%
Specialized Family Care Home-(Medley)	10	0	10	0.00%
Therapeutic Foster Care	899	8	907	0.88%
Transitional Living Client	35	0	35	0.00%
<b>Summary</b>	<b>3846</b>	<b>337</b>	<b>4183</b>	<b>8.06%</b>