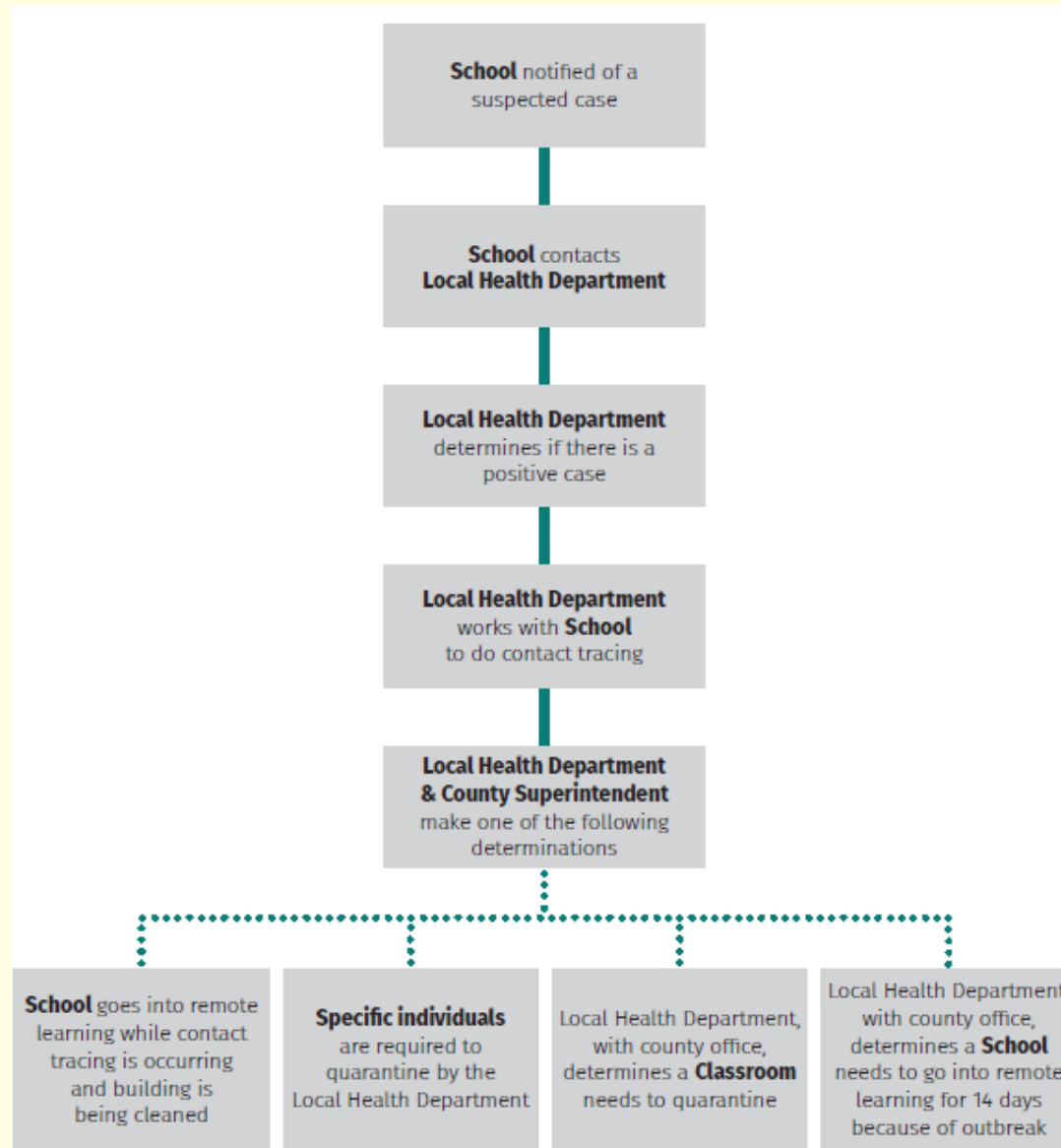


# Coronavirus Disease 2019 (COVID-19) in School Settings

November 11, 2020



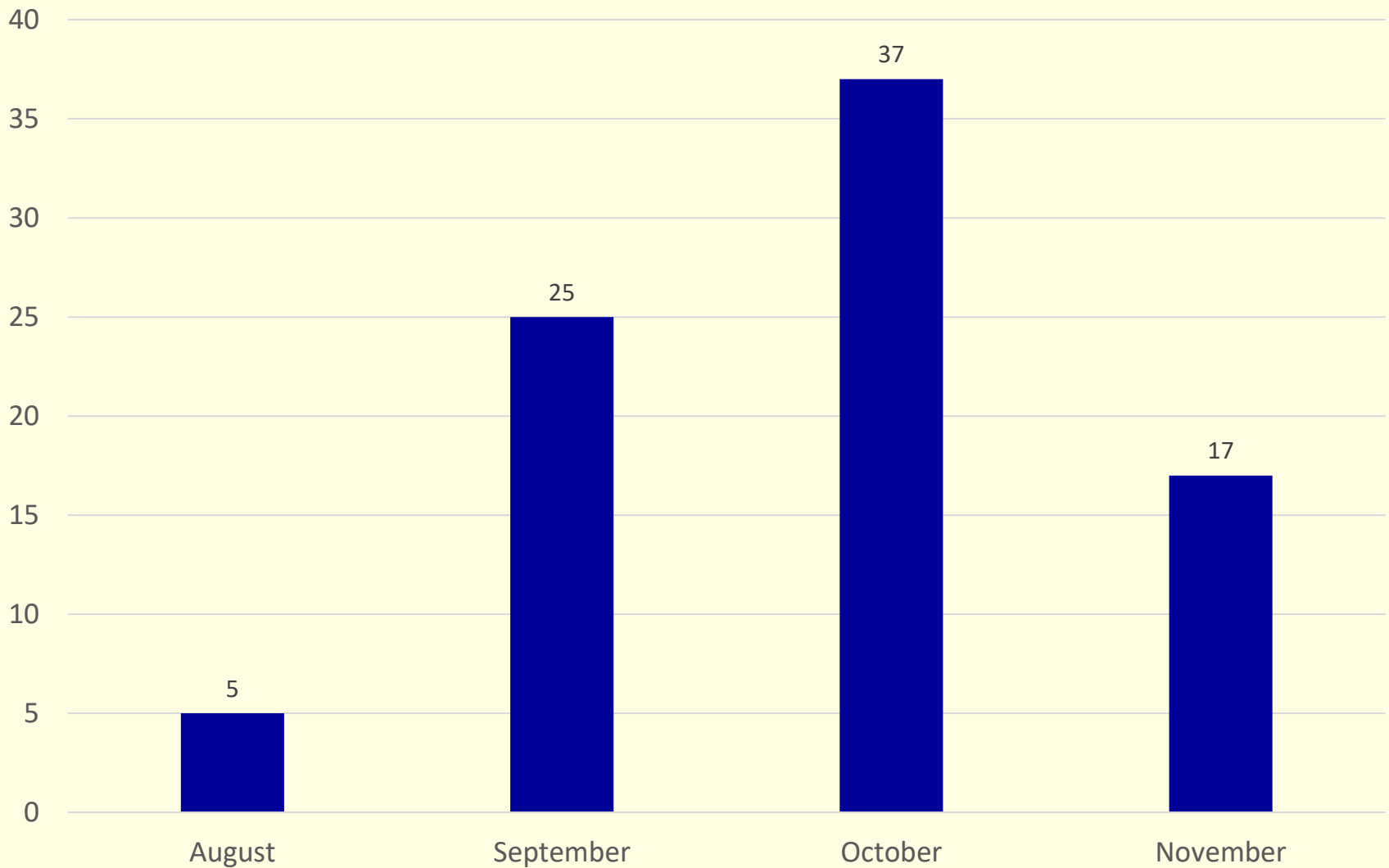
# Responding to COVID-19 Cases



# Outbreak Trends in School Settings

- **84 outbreaks in K-12 schools have been reported since August**
- **Total of 357 confirmed cases reported from 40 counties**
  - Range 2-24 cases per outbreak
  - Median 4 cases
  - 158 (44%) students and 199 (56%) staff

# Confirmed Outbreaks in School Settings by Month, N=84



# School Setting Outbreak Trends

- **31 (37%) outbreaks occurred in staff only**
  - Result of in-person meetings, congregating in break rooms, close contact among teachers especially those who co-teach
- **17 (20%) outbreaks occurred among sports teams**
  - Football (8), Volleyball (5), Other (4)
- **19 (23%) outbreaks were a result of students or staff becoming infected through close contact with a case or being associated with an outbreak in the community**

- **14 (17%) outbreaks have occurred in the educational setting**
  - 4 outbreaks in special education settings where close contact is more common
  - 5 outbreaks resulted in only a single student and teacher developing illness
  - 2 outbreaks occurred in music or health settings where the classroom activities likely increased risk for transmission
  - 3 outbreaks occurred in educational settings where there were multiple teachers in the classroom who were positive increasing the likelihood of exposure

# Best Practices

- Cloth face coverings are one of the best preventative measures to reduce transmission
- Reinforce social distancing in settings both inside and outside the classroom
- Limit opportunities for exposure among staff by reducing face-to-face contact
  - Break rooms, in-person meetings, congregating for lunch, social gatherings, visiting other classrooms
- Be self aware that actions taken outside of the classroom have a direct impact on the health and safety of students inside the classroom
- Cohorting students limits transmission – have assigned seating
- Promote social distancing and eliminate large gatherings

# Conclusion

- To date, we have seen limited transmission in schools in West Virginia
- Greatest risk for transmission appears to be among older children, aged 12-17 years
- Schools and local health departments have worked diligently to implement protective measures to reduce transmission in the school setting
- As we see increased community transmission, it is crucial that schools continue to layer prevention strategies to reduce COVID-19 disease risk for students, teachers, school staff, and families