

Interpreting IgG and IgM Western Blots

IgM Western Blot

An IgM immunoblot should be considered positive if **two of the following three bands**

are present:

- 24 kDa (OspC) band
- 39 kDa (BmpA) band
- 41 kDa (Fla) band

IgG Western Blot

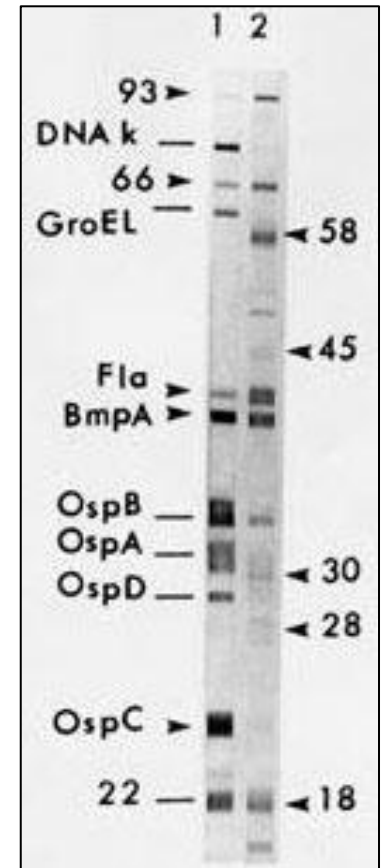
An IgG immunoblot should be considered positive if **five of the following ten bands** are

present:

- 18 kDa band
- 21 kDa (OspC) band
- 28 kDa band
- 30 kDa band
- 39 kDa (BmpA) band
- 41 kDa (Fla) band
- 58 kDa band
- 66 kDa band
- 93 kDa band

Visit the CDC's Lyme disease testing page for more information:

<http://www.cdc.gov/lyme/diagnostesting/index.html>



Sample Western blot