

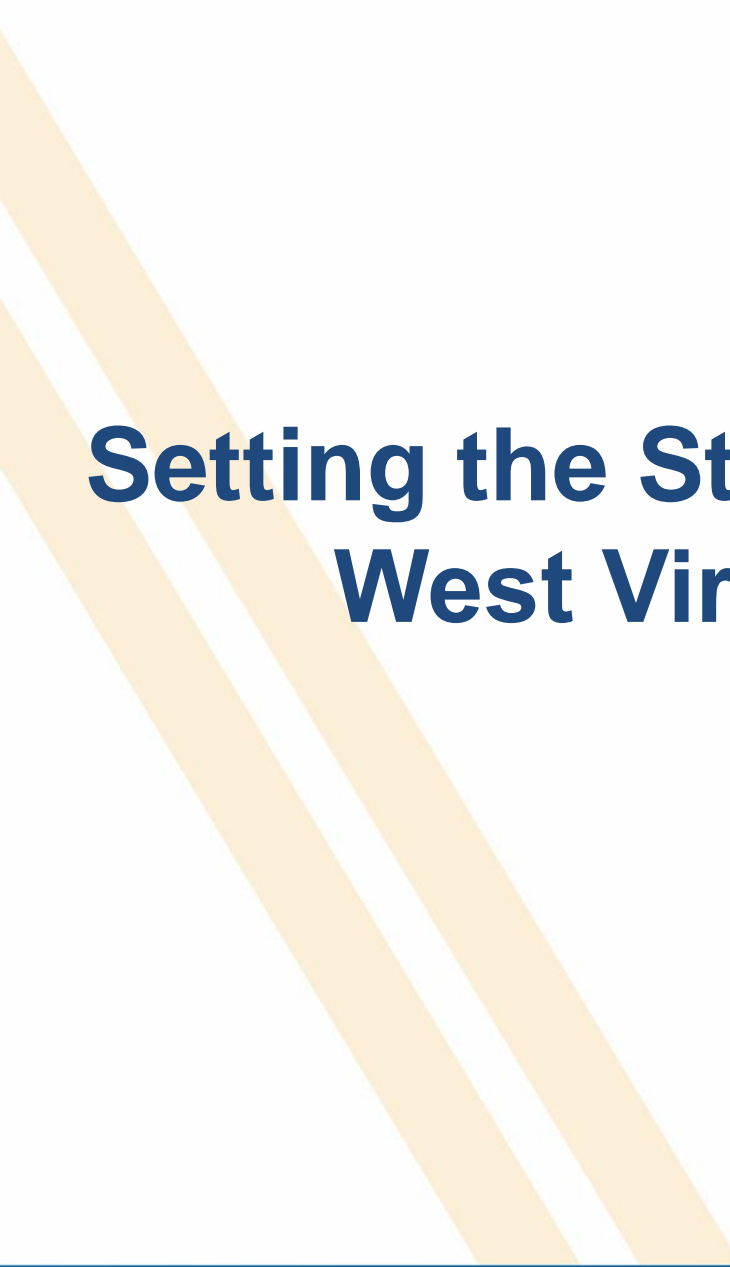
# West Virginia's Economic Outlook

**John Deskins, Ph.D.**

**Bureau for Public Health  
February 2017**

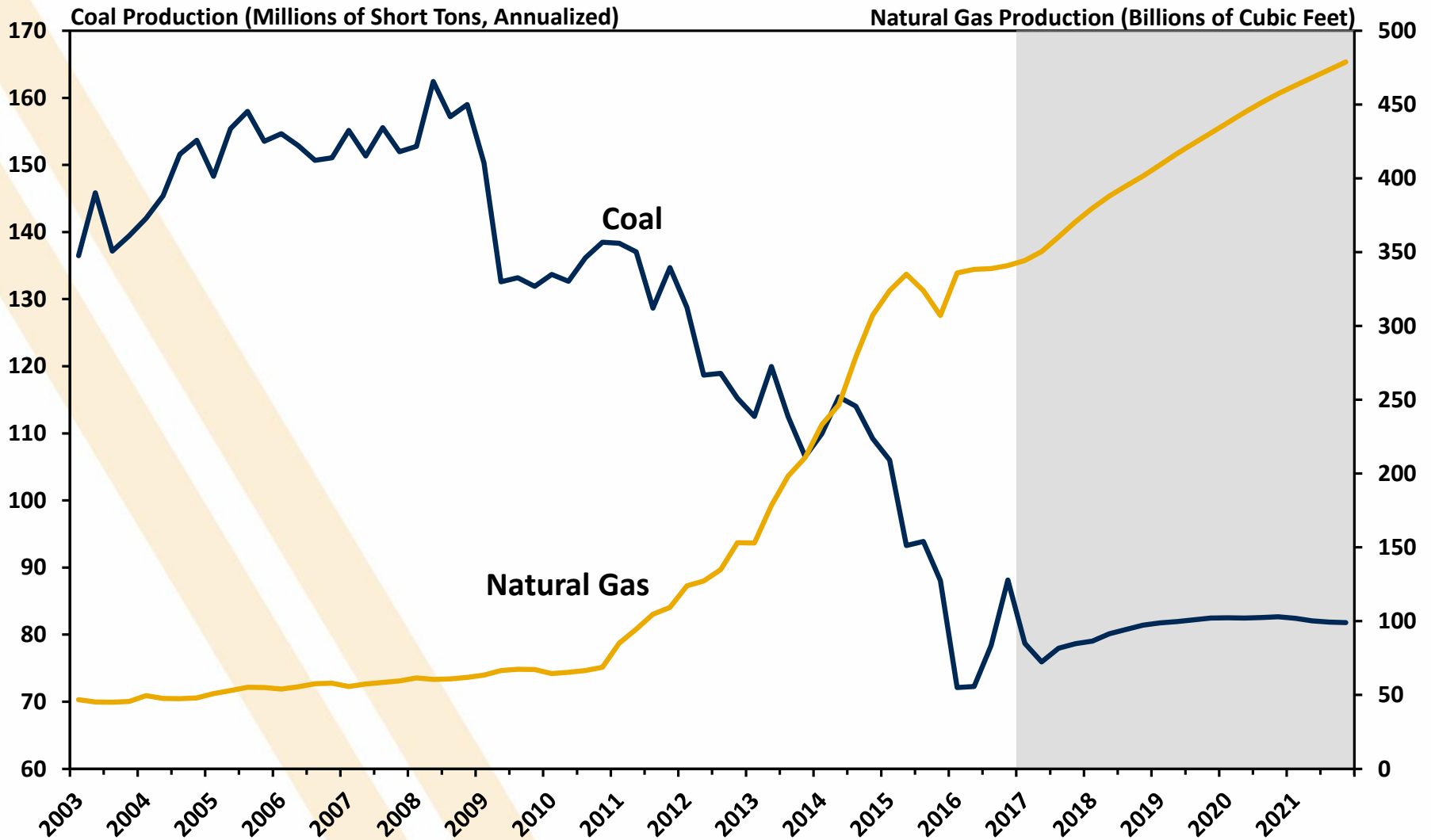
Bureau of Business & Economic Research  
College of Business & Economics  
West Virginia University  
[www.be.wvu.edu/bber](http://www.be.wvu.edu/bber)

Copyright ©2017 by WVU Research Corporation



# Setting the Stage for Understanding West Virginia's Economy: Energy

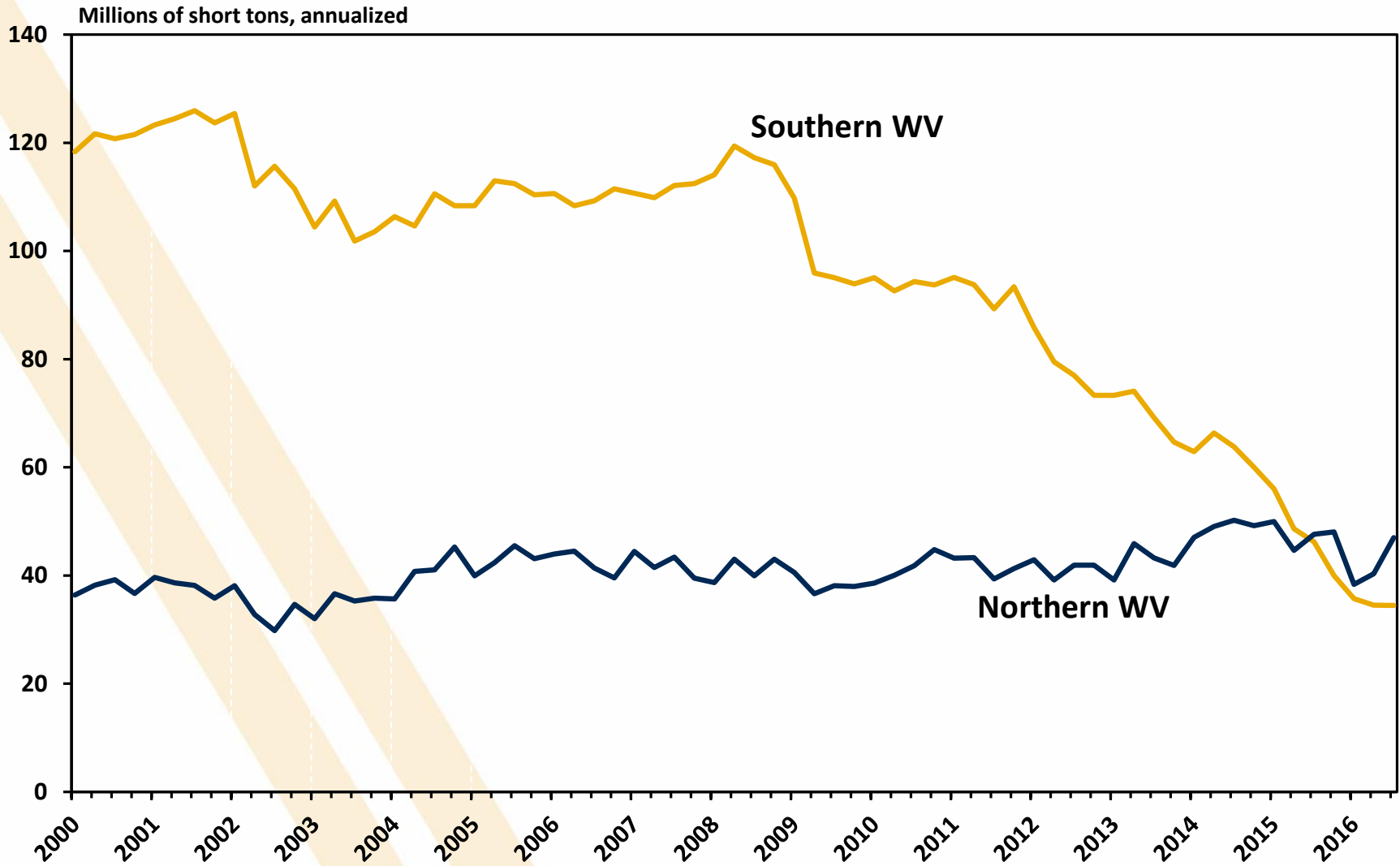
# West Virginia Coal and Natural Gas Output



# Key Drivers of Demand Decline

- Environmental Regulatory Climate
- Natural Gas Boom
- International Demand

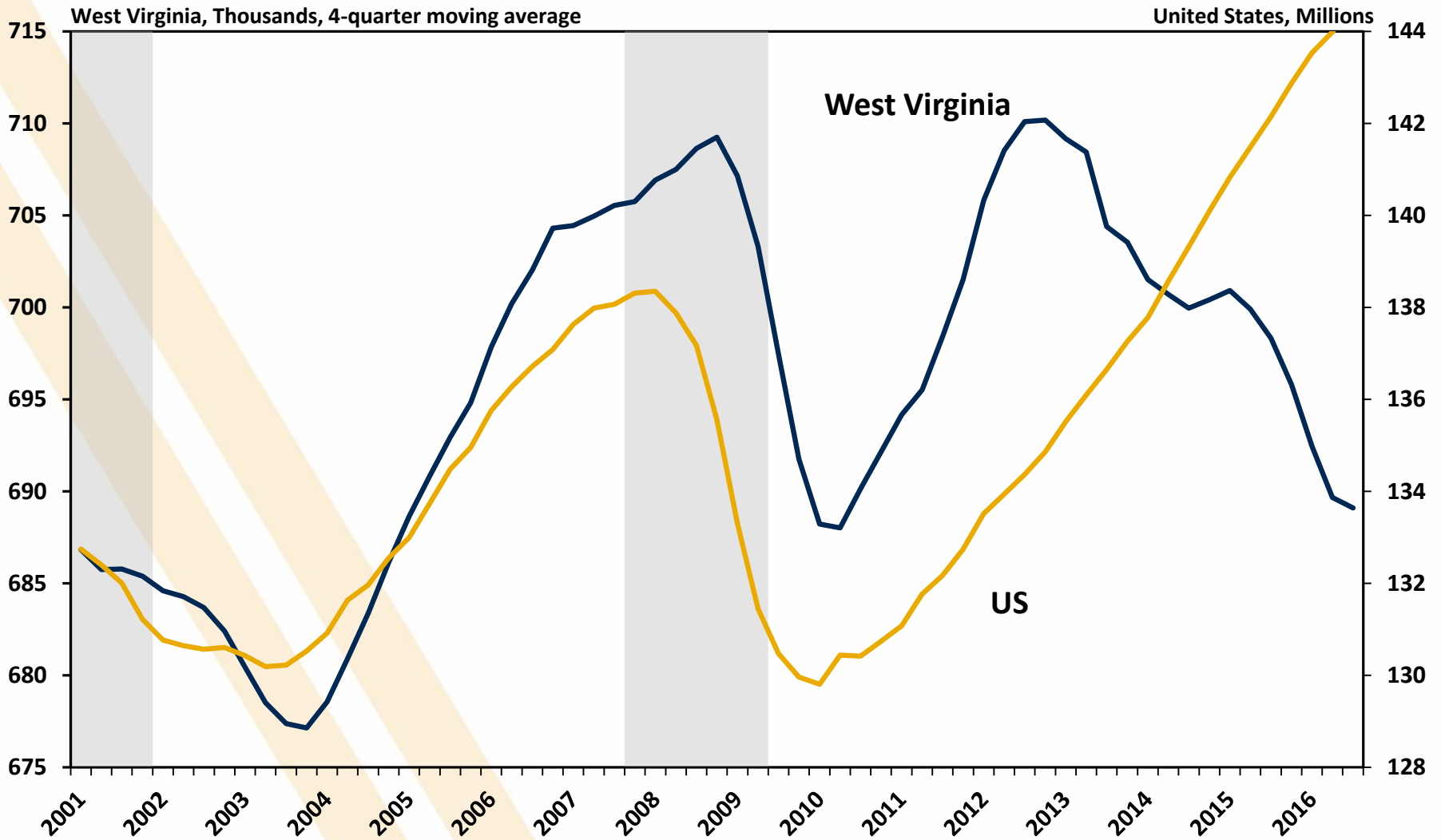
# West Virginia Regional Coal Production



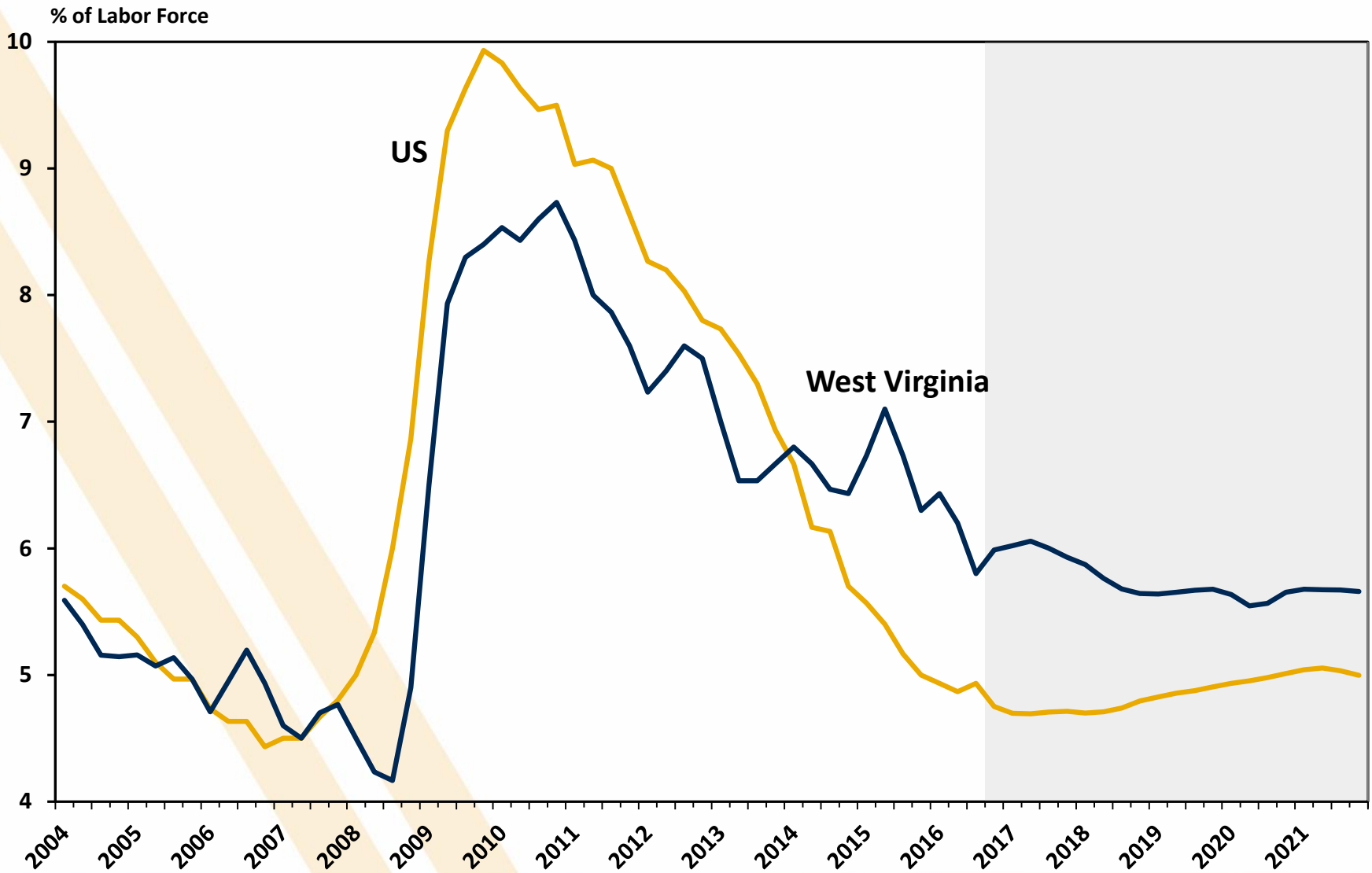


# Where Do We Stand? Jobs, Income, and Output

# Total Employment

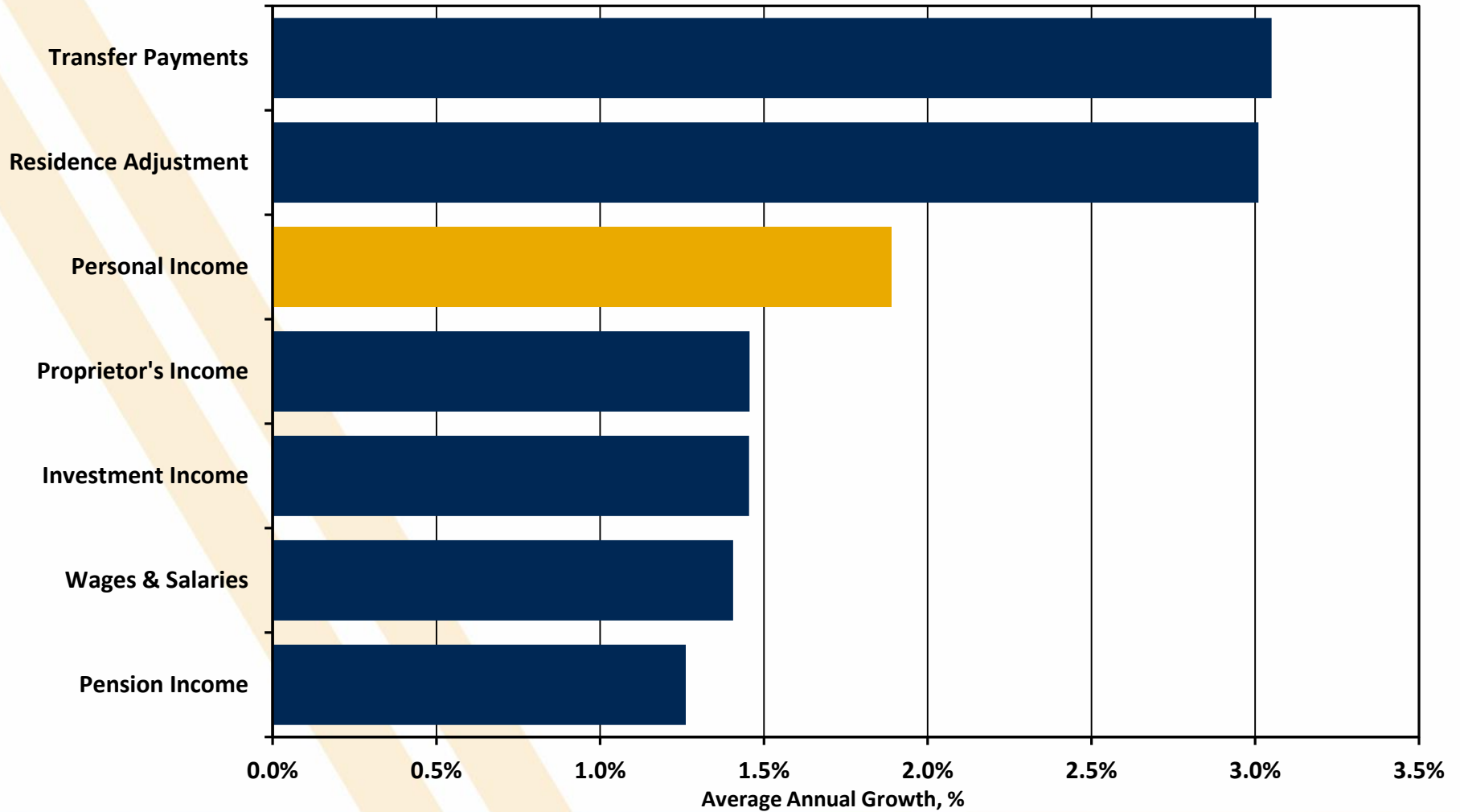


# Unemployment Rate



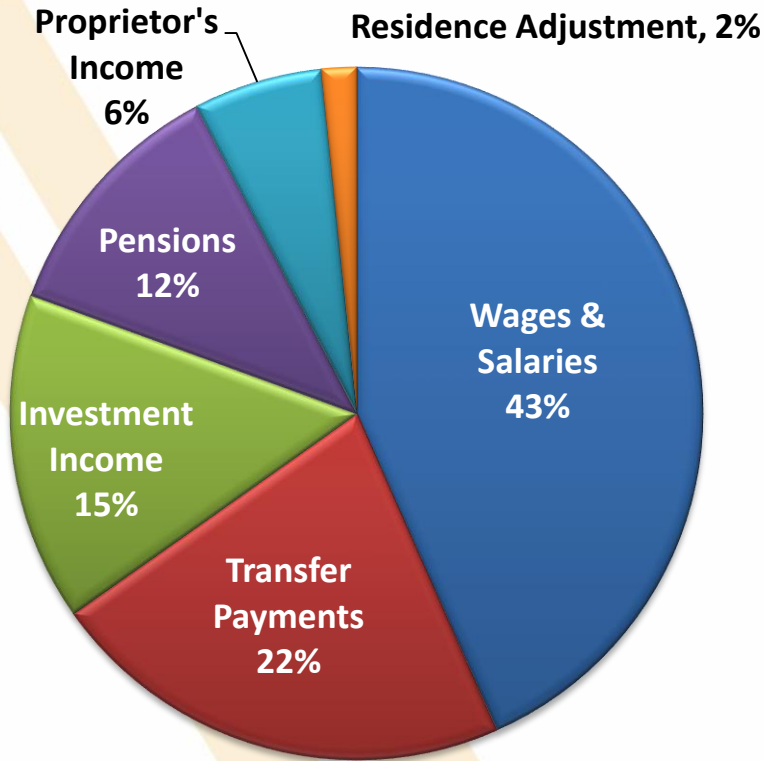


# Forecast Growth by Source of Real Personal Income, 2016-2021

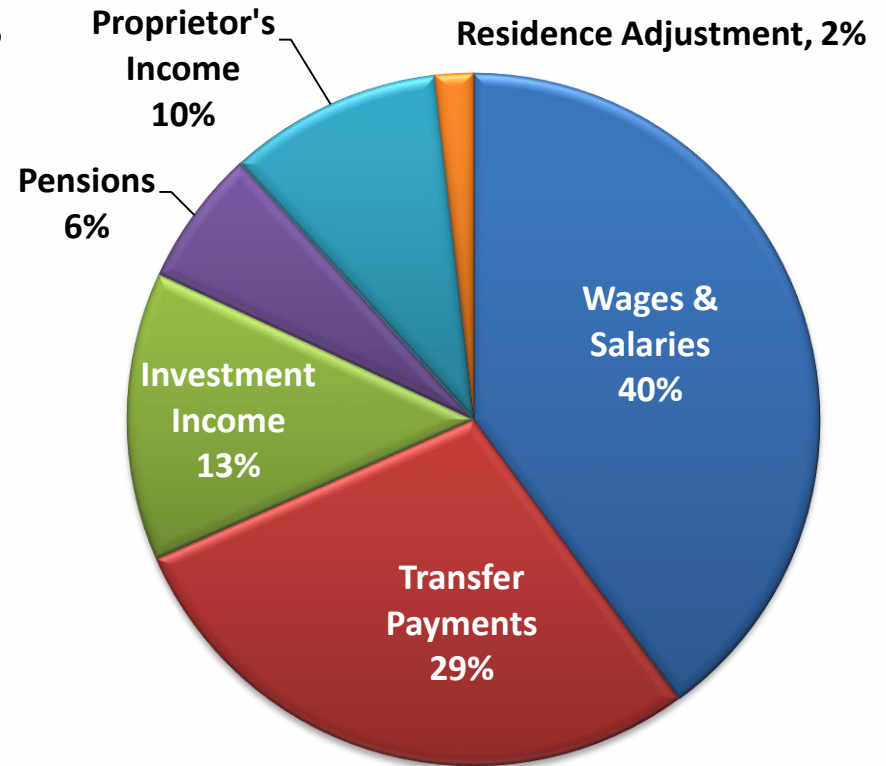


# Historical and Forecast Share of Total Personal Income by Source

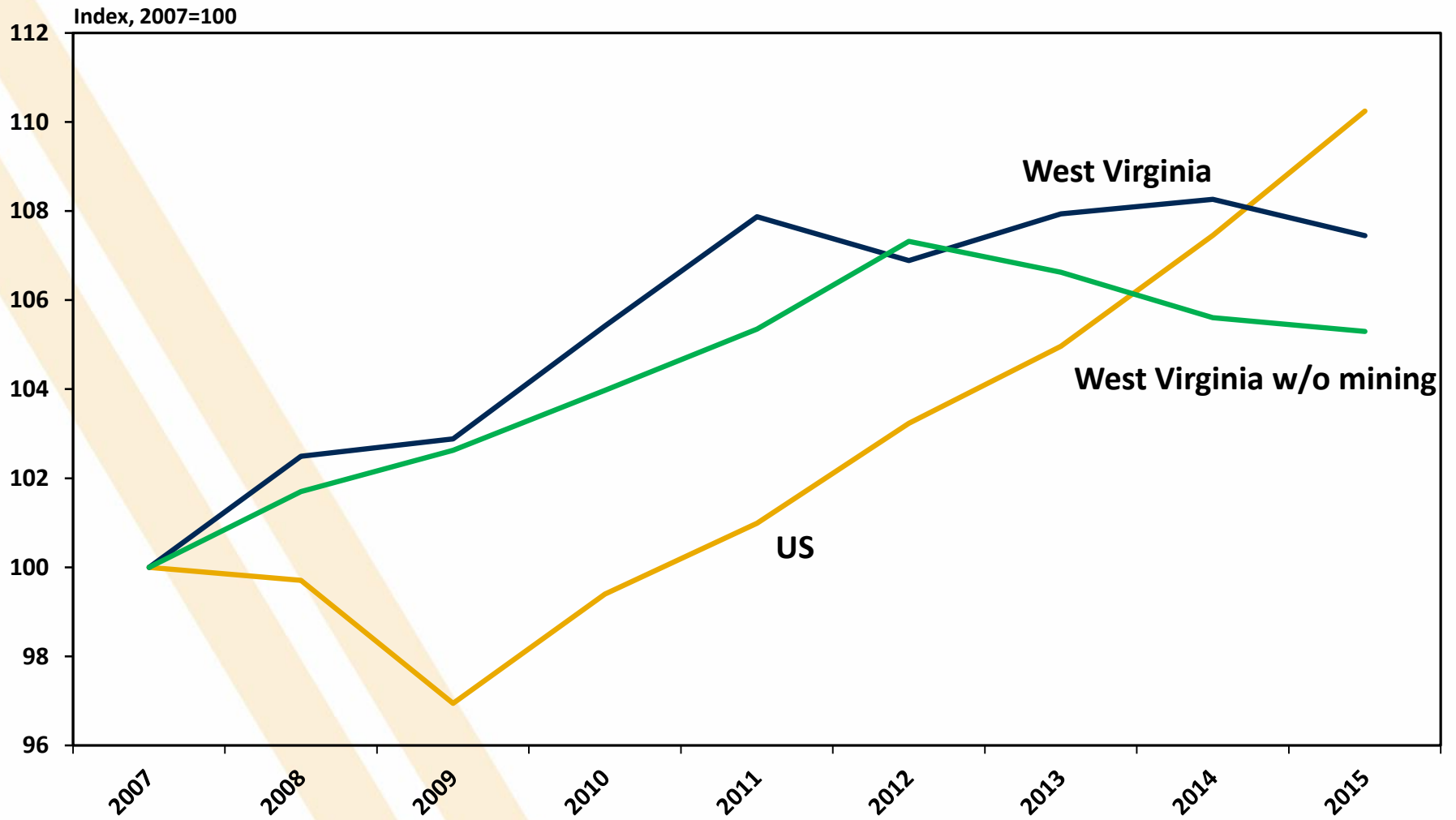
2001



2021



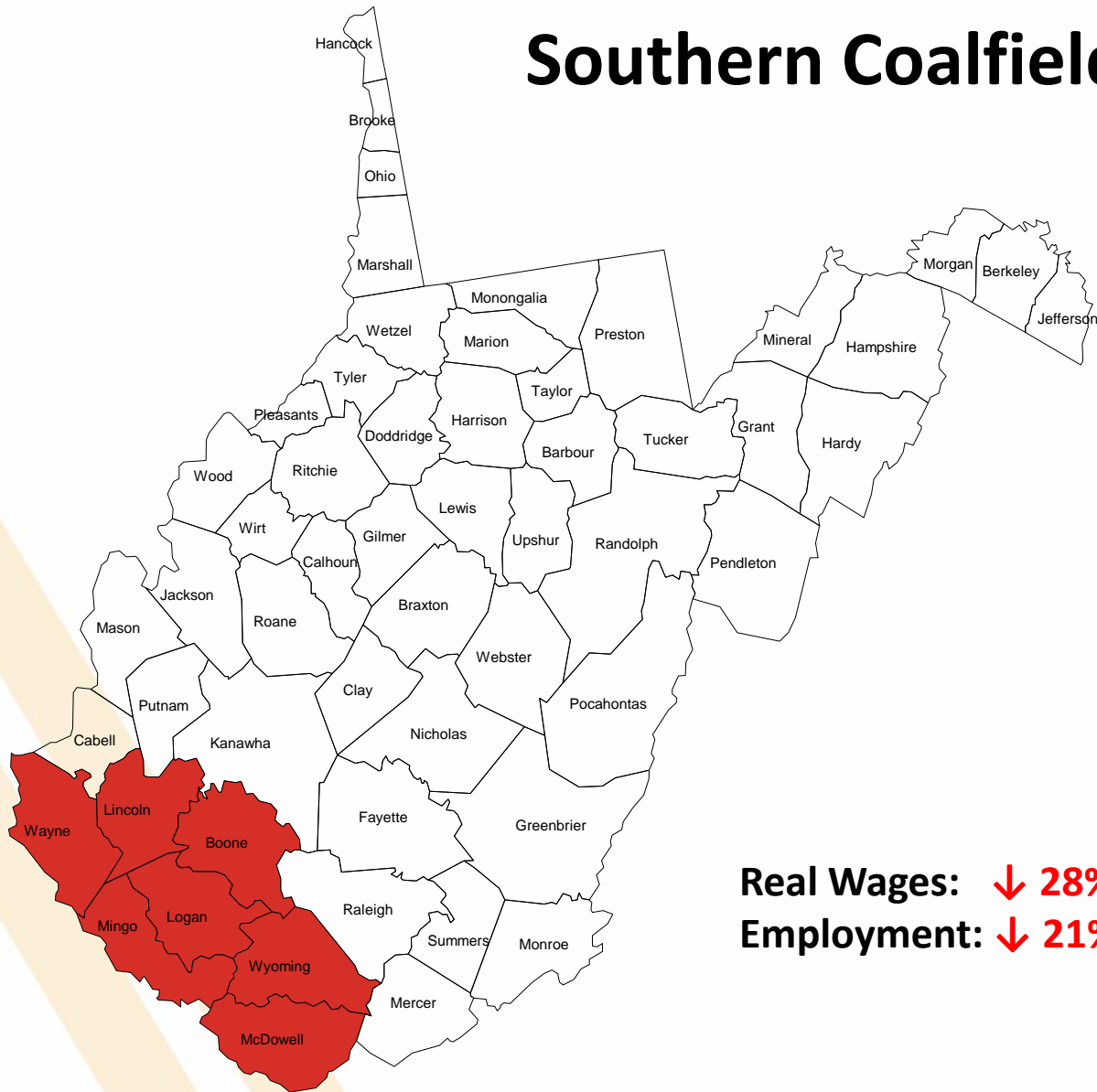
# Real GDP Growth





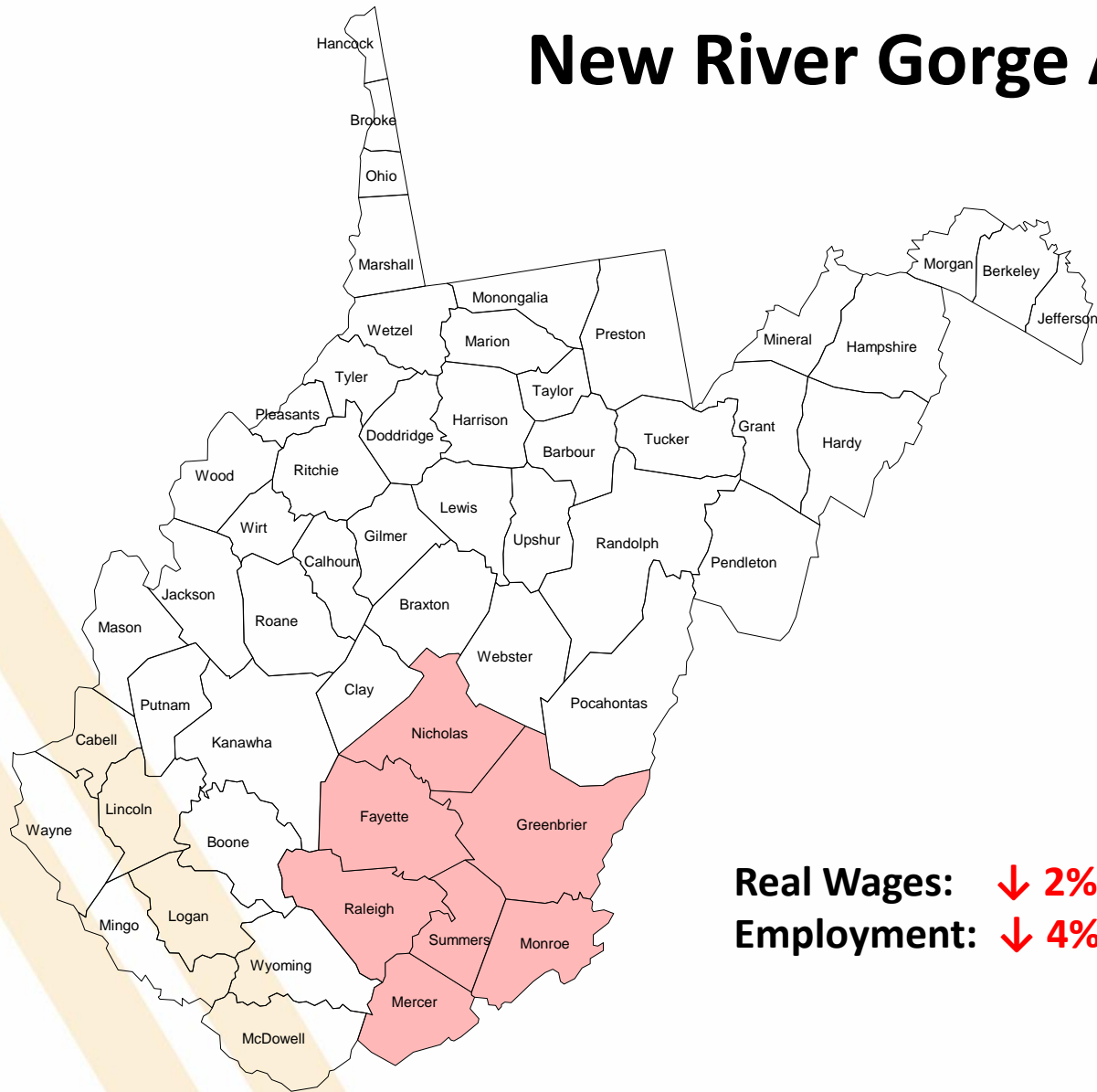
# Regional Economies in West Virginia

# Southern Coalfields



**Real Wages: ↓ 28% since 2010Q1**  
**Employment: ↓ 21%**

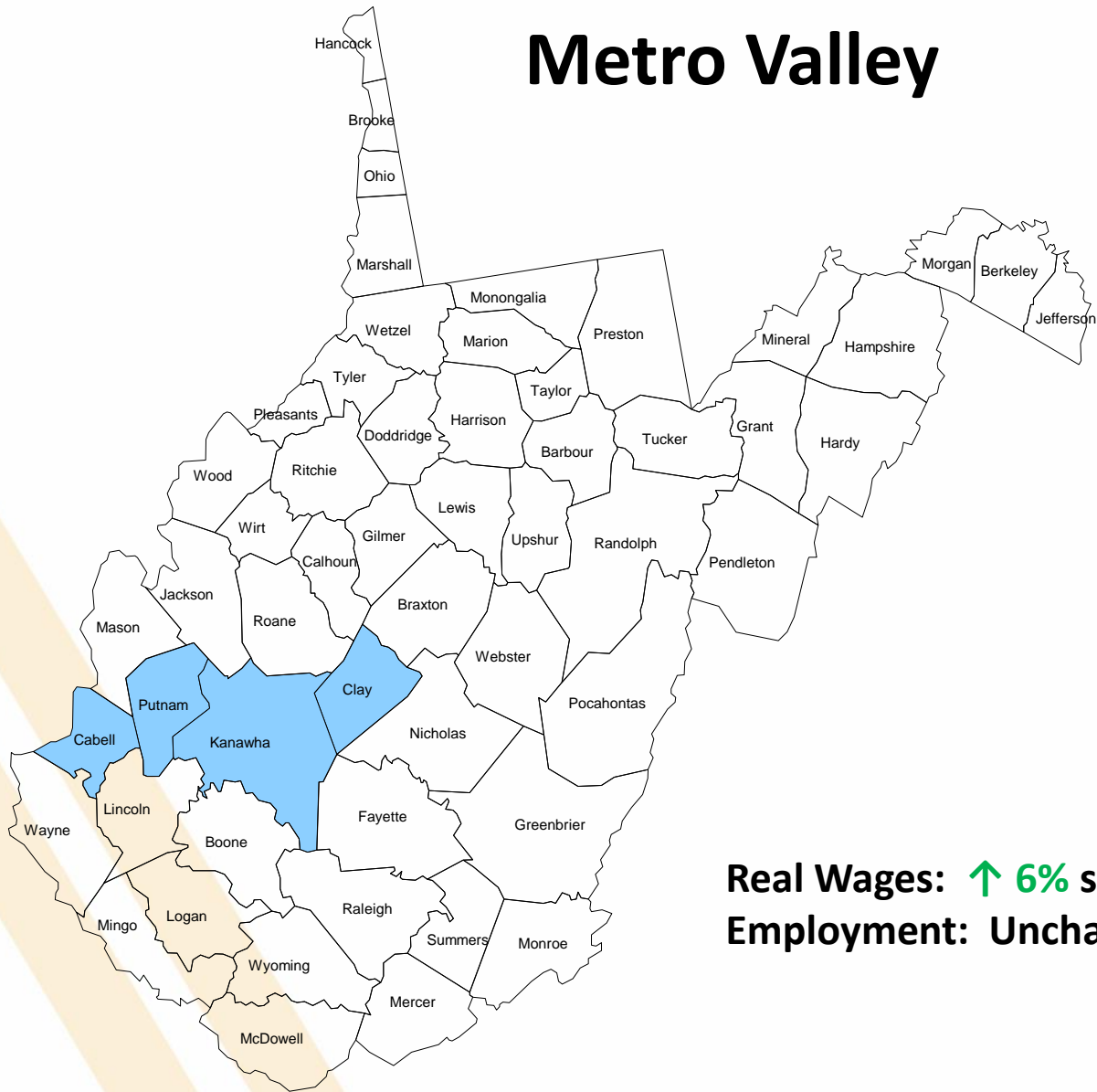
# New River Gorge Area



Real Wages: ↓ 2% since 2010Q1

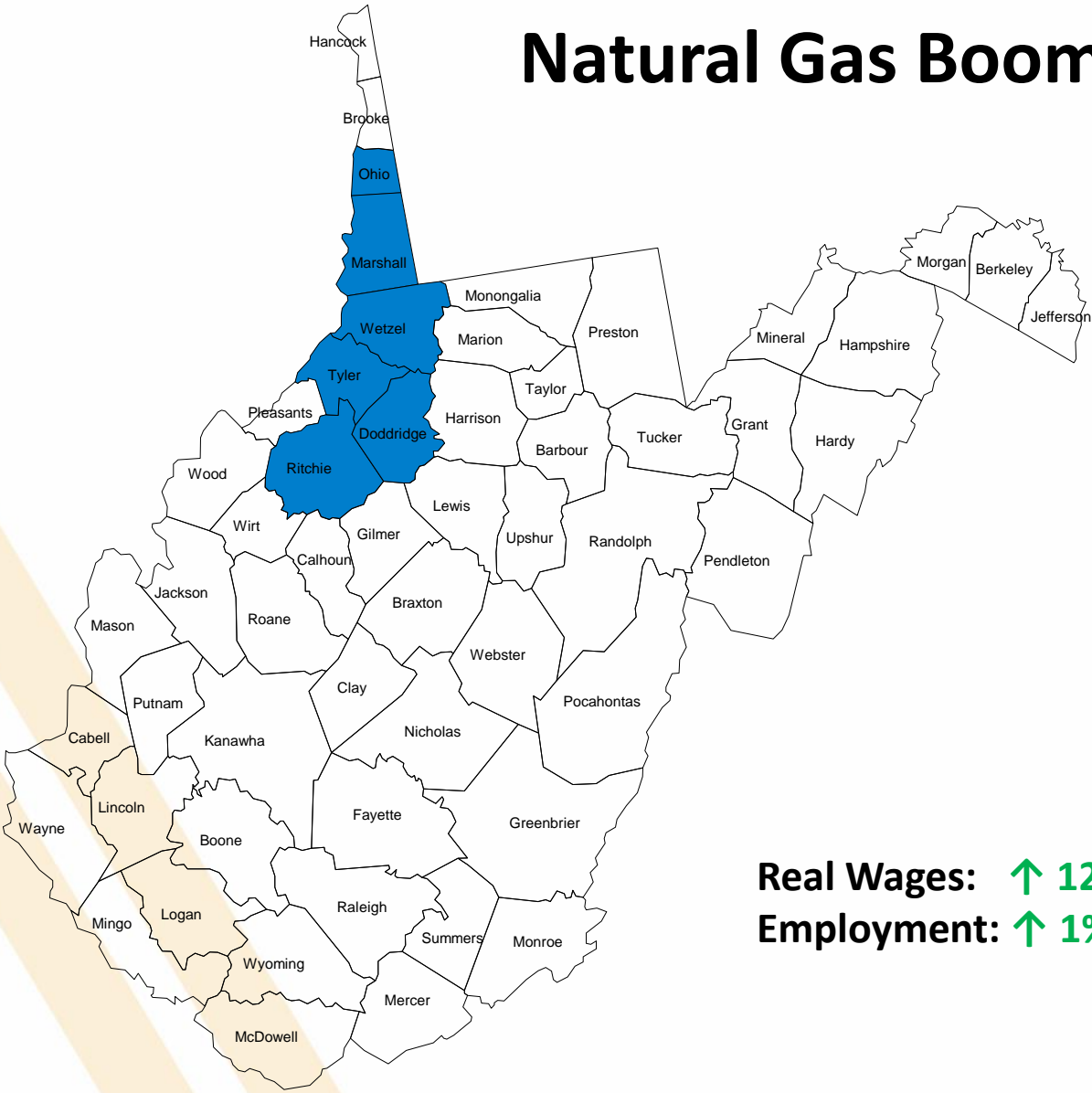
Employment: ↓ 4%

# Metro Valley



**Real Wages: ↑ 6% since 2010Q1**  
**Employment: Unchanged**

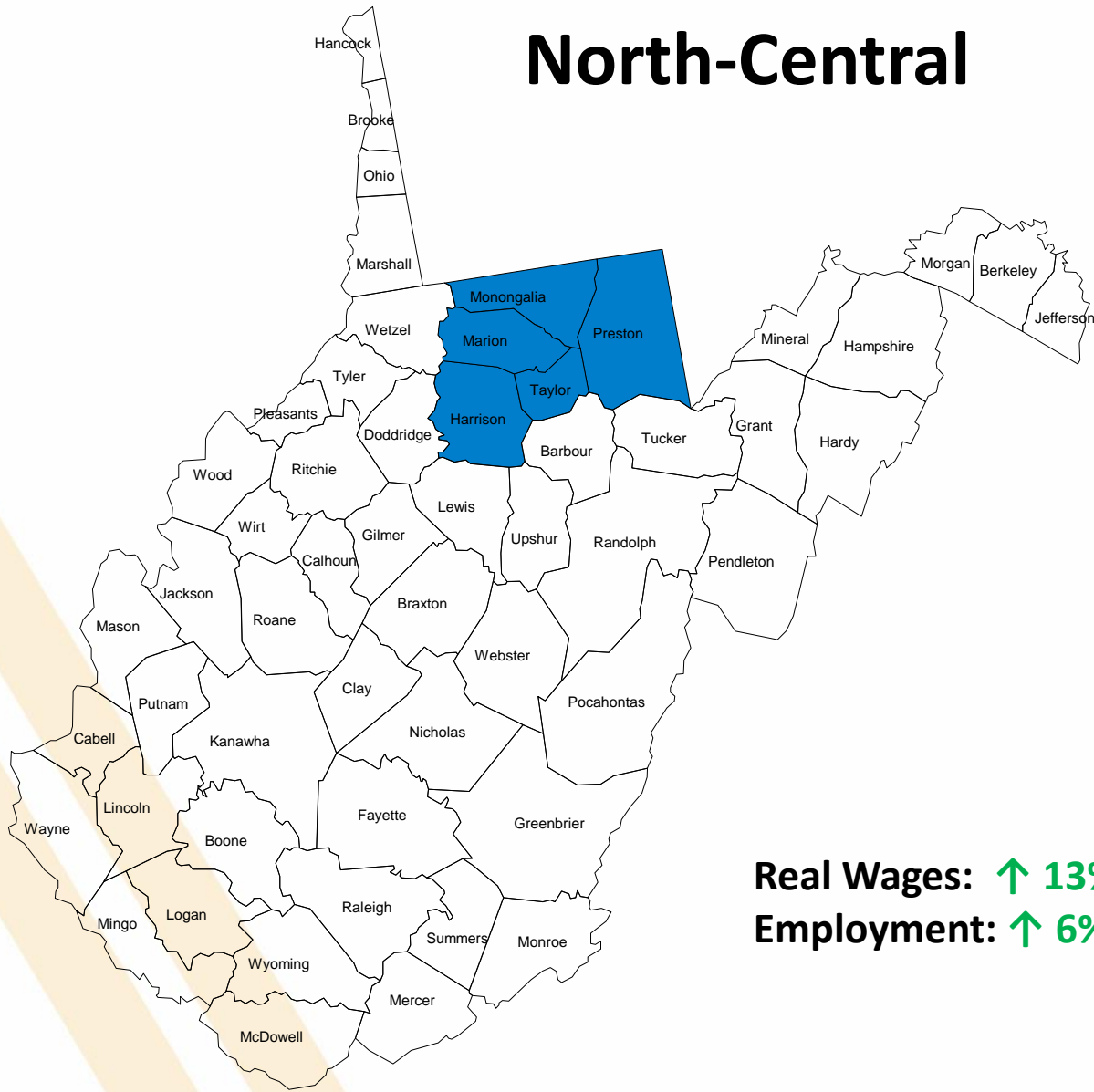
# Natural Gas Boom Region



**Real Wages:** ↑ 12% since 2010Q1  
**Employment:** ↑ 1%

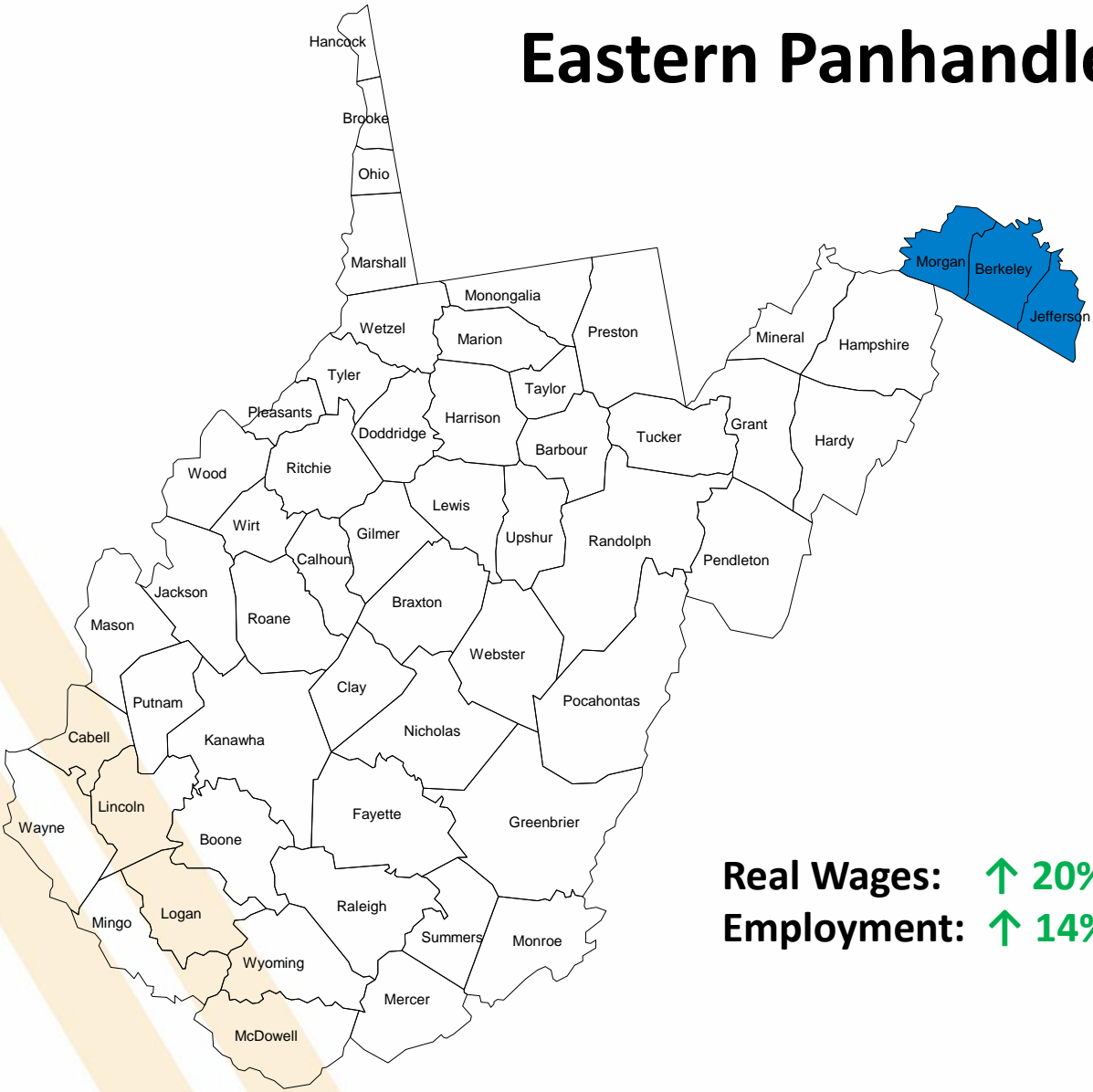


# North-Central



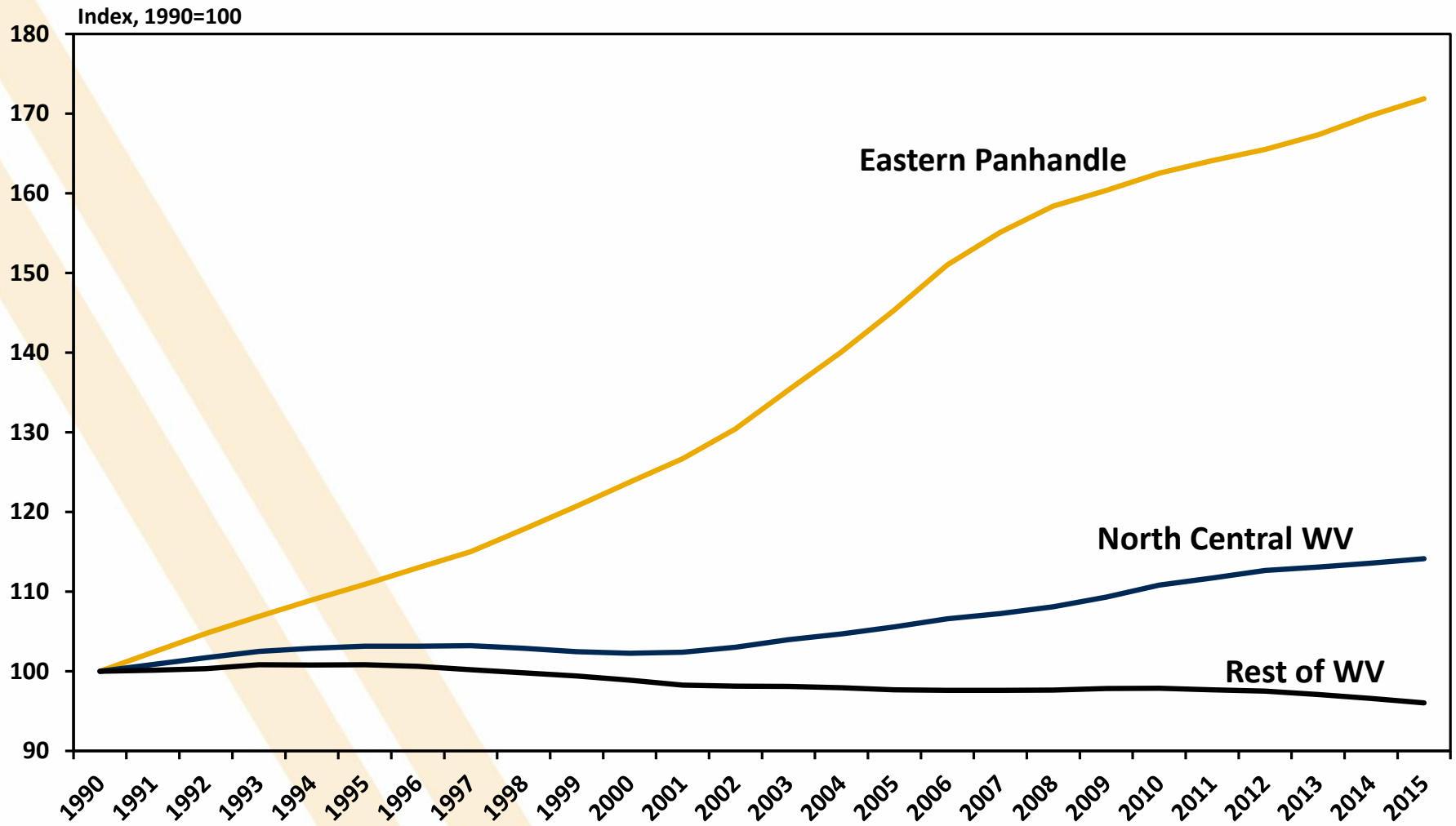
**Real Wages: ↑ 13% since 2010Q1**  
**Employment: ↑ 6%**

# Eastern Panhandle



**Real Wages:** ↑ 20% since 2010Q1  
**Employment:** ↑ 14%

# Eastern Panhandle and North-Central Region Adding Residents



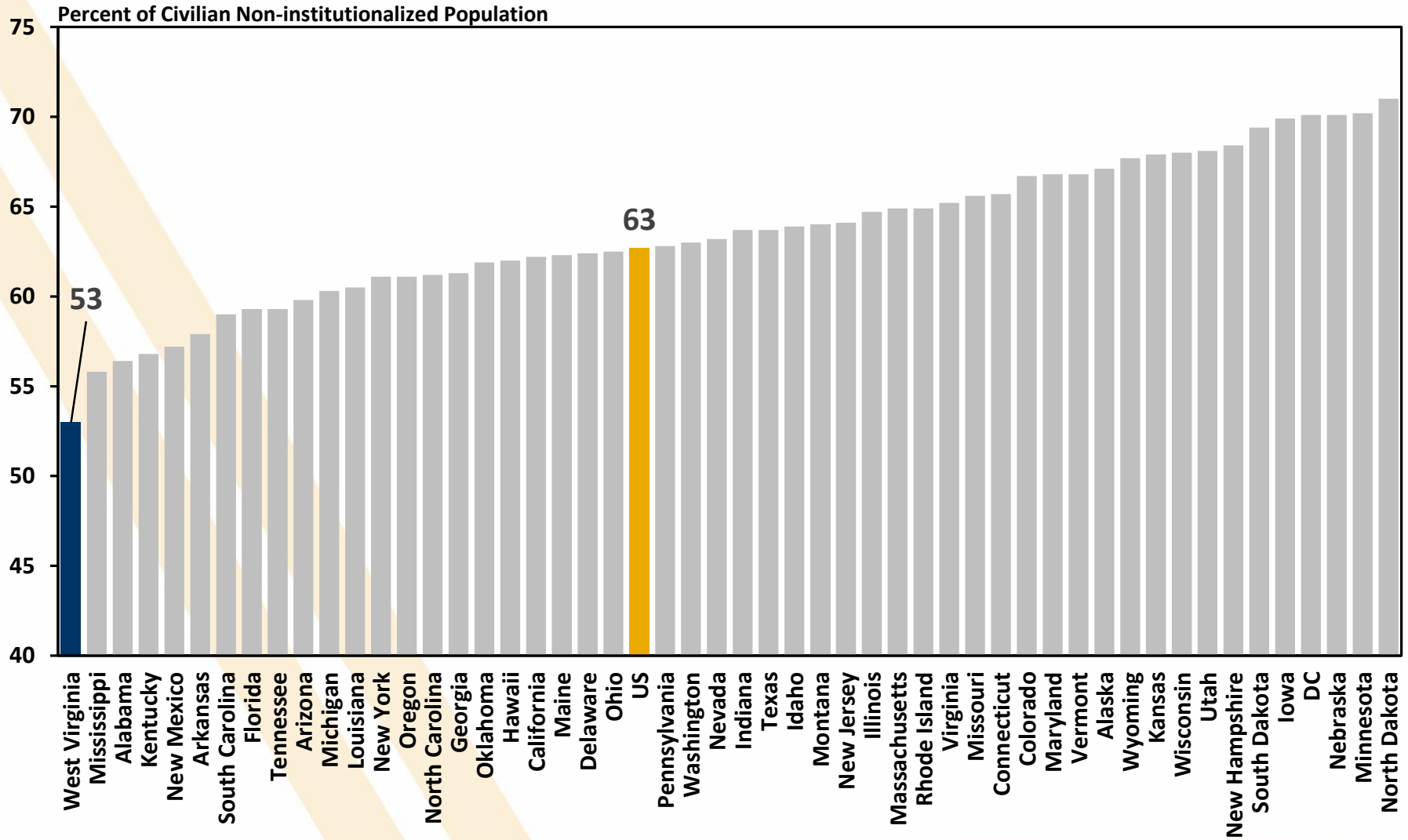
# Conversation Starters

## Fostering an Entrepreneurial Culture

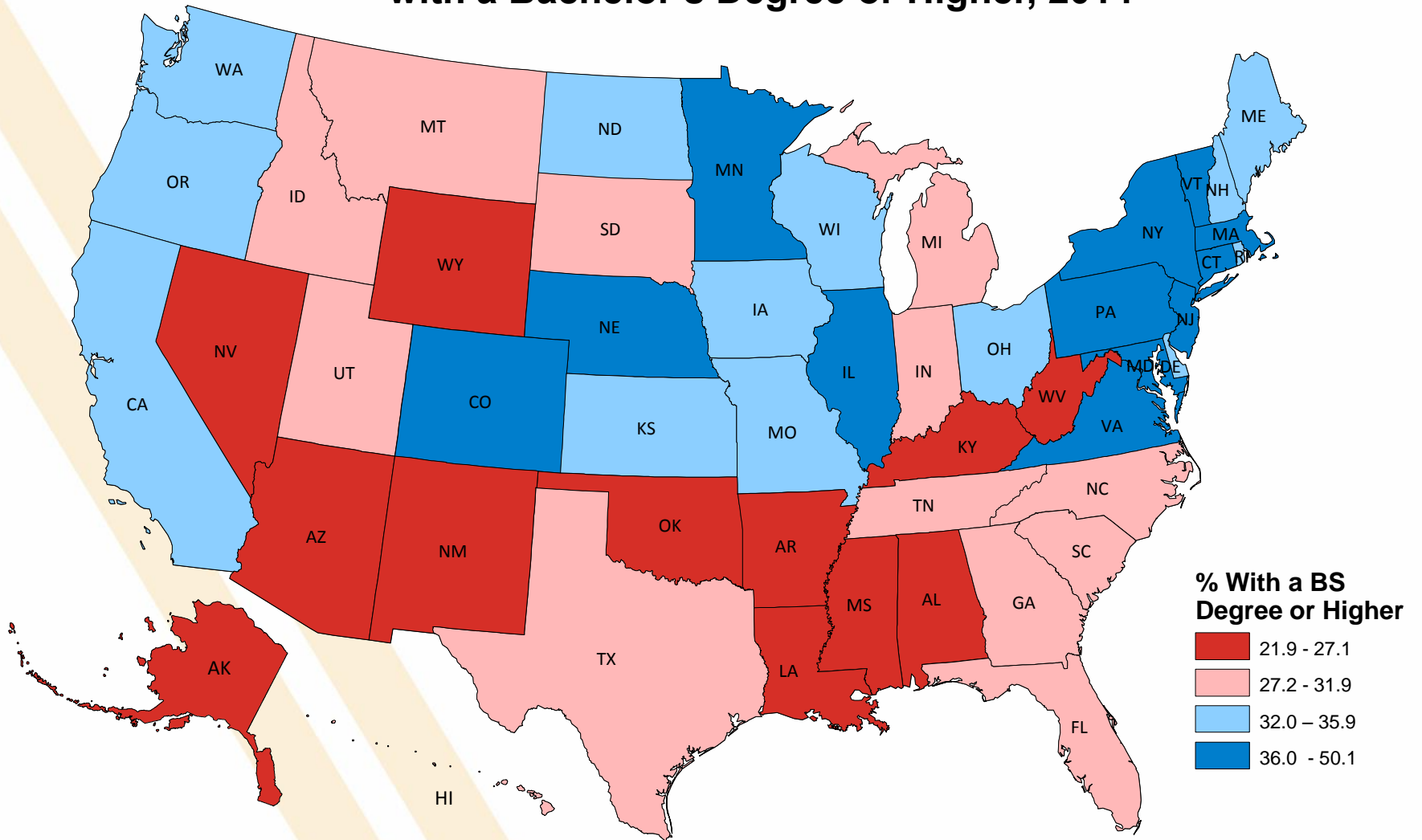
# Conversation Starters

## Human Capital: Education and Health

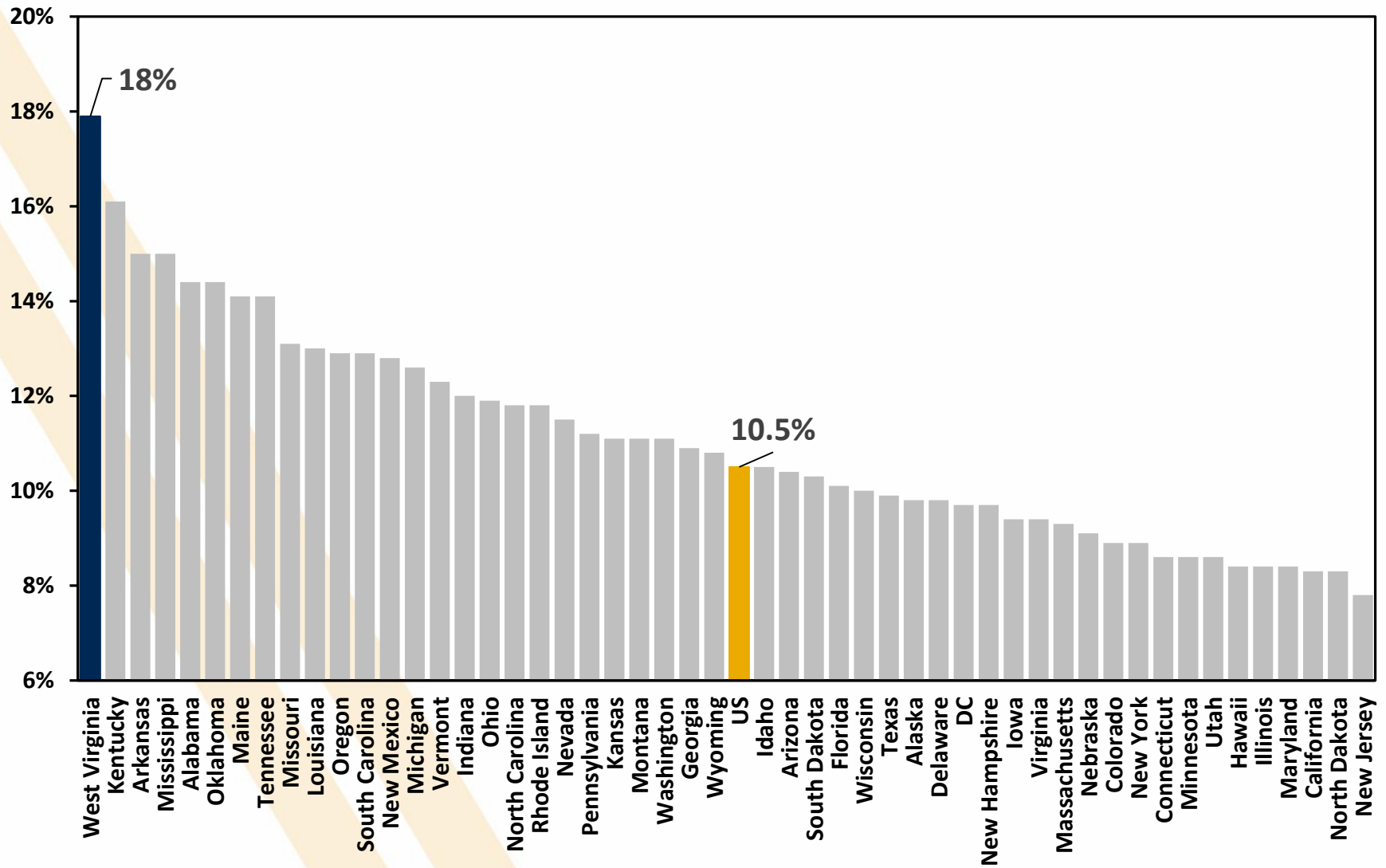
# Labor Force Participation Rate, 2015



# Share of Residents 25 to 34 Years Old with a Bachelor's Degree or Higher, 2014

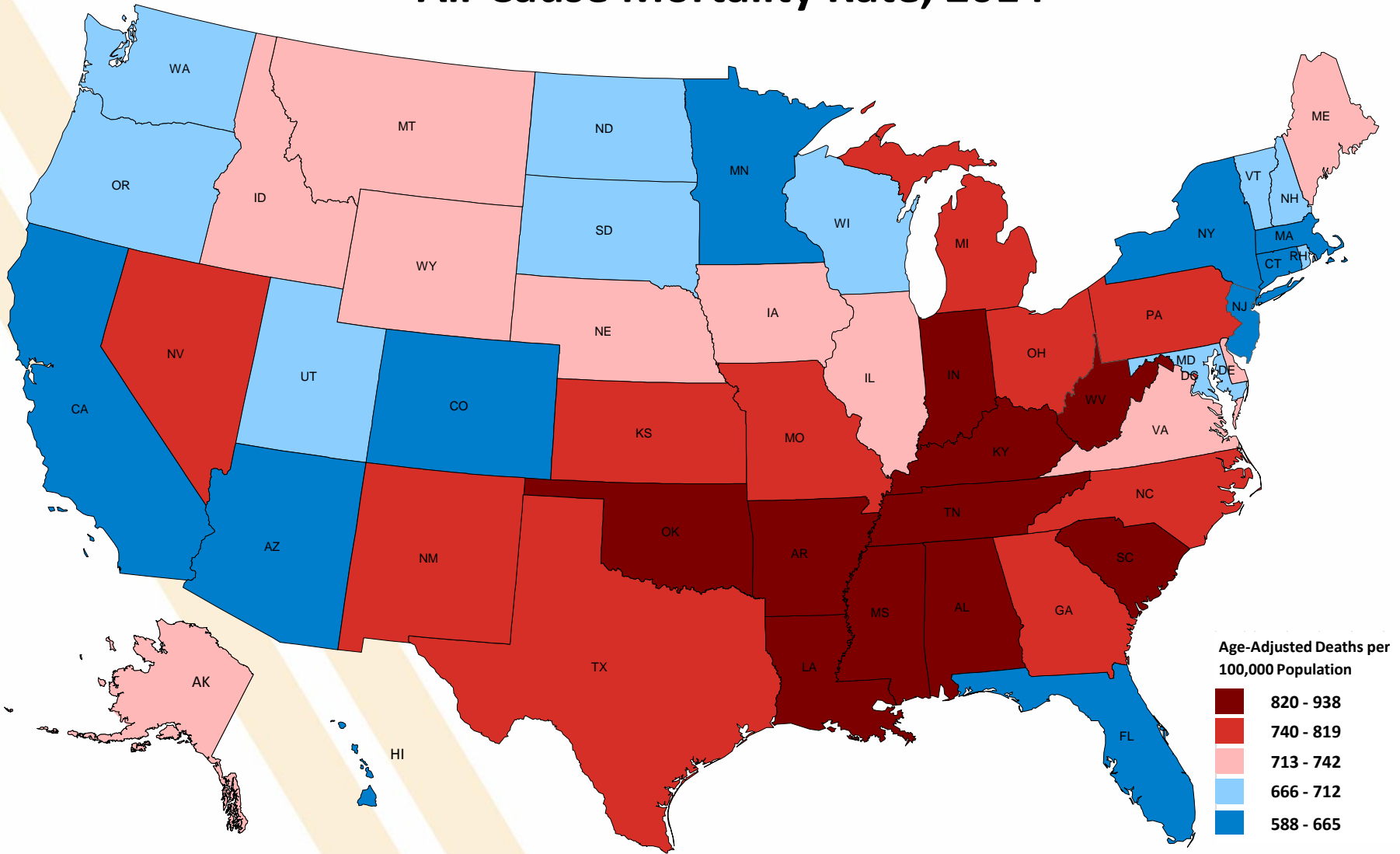


# Share of Population 18 to 64 Years Old with Disability, 2014





# All-Cause Mortality Rate, 2014



# Conversation Starters

## Thinking About Public Policy



# Conversation Starters

## Thinking About Good Government