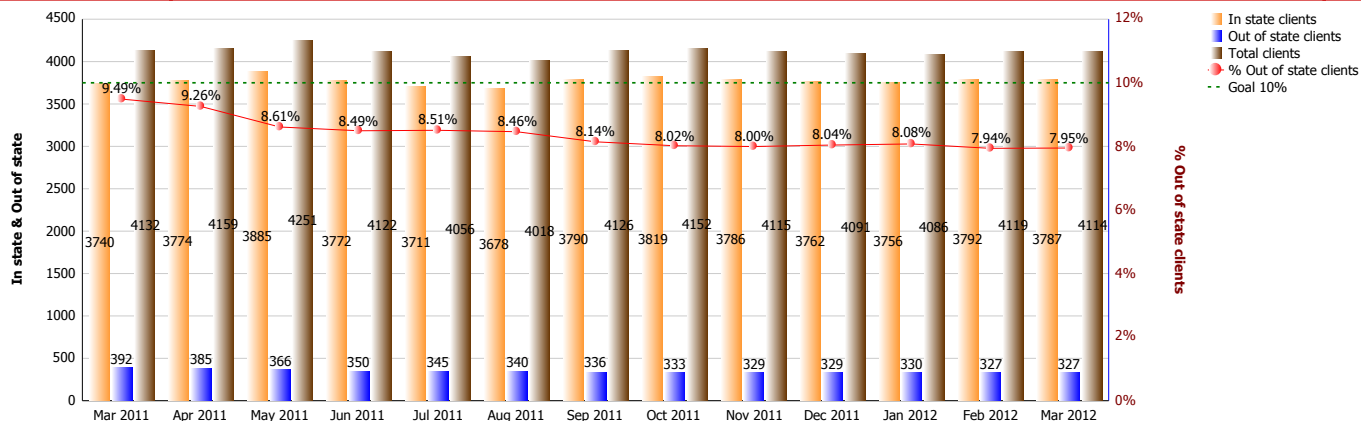


## Foster Care Placement Report



	Mar 2011	Apr 2011	May 2011	Jun 2011	Jul 2011	Aug 2011	Sep 2011	Oct 2011	Nov 2011	Dec 2011	Jan 2012	Feb 2012	Mar 2012
<b>In state clients</b>	3740	3774	3885	3772	3711	3678	3790	3819	3786	3762	3756	3792	3787
<b>Out of state clients</b>	392	385	366	350	345	340	336	333	329	329	330	327	327
<b>Total clients</b>	4132	4159	4251	4122	4056	4018	4126	4152	4115	4091	4086	4119	4114
<b>% Out of state clients</b>	9.49%	9.26%	8.61%	8.49%	8.51%	8.46%	8.14%	8.02%	8.00%	8.04%	8.08%	7.94%	7.95%

### In state and Out of state clients by Provider type for the month of Mar 2012

Provider Type	In state clients	Out of state clients	Total clients	% Out of state clients
Agency Emergency Shelter	146	0	146	0.00%
Agency Foster Family Care	1073	32	1105	2.90%
Department Adoptive Home	181	19	200	9.50%
Detention Centers	40	0	40	0.00%
Group Residential Care	700	170	870	19.54%
Kinship/Relative	614	21	635	3.31%
Medical Hospital	1	3	4	75.00%
Psychiatric Facilities (Long Term)	62	74	136	54.41%
Psychiatric Hospital (Short Term)	17	0	17	0.00%
Specialized Family Care (Medley)	42	0	42	0.00%
Specialized Family Care Home-(Medley)	10	0	10	0.00%
Therapeutic Foster Care	866	8	874	0.92%
Transitional Living Client	35	0	35	0.00%
<b>Summary</b>	<b>3787</b>	<b>327</b>	<b>4114</b>	<b>7.95%</b>