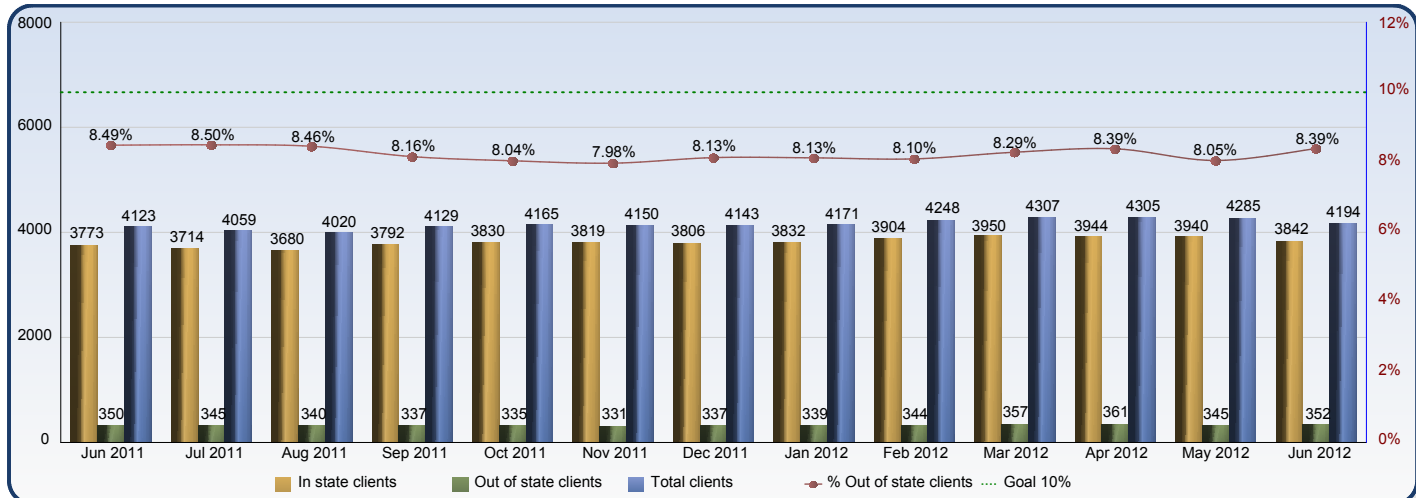




Foster Care Placements Report



	Jun 2011	Jul 2011	Aug 2011	Sep 2011	Oct 2011	Nov 2011	Dec 2011	Jan 2012	Feb 2012	Mar 2012	Apr 2012	May 2012	Jun 2012
In state clients	3773	3714	3680	3792	3830	3819	3806	3832	3904	3950	3944	3940	3842
Out of state clients	350	345	340	337	335	331	337	339	344	357	361	345	352
Total clients	4123	4059	4020	4129	4165	4150	4143	4171	4248	4307	4305	4285	4194
% Out of state clients	8.49%	8.50%	8.46%	8.16%	8.04%	7.98%	8.13%	8.13%	8.10%	8.29%	8.39%	8.05%	8.39%

In state and Out of state clients by Provider type for the month of Jun 2012

Provider Type	In state clients	Out of state clients	Total clients	% Out of state clients
Agency Emergency Shelter	145	0	145	0.00%
Agency Foster Family Care	1129	33	1162	2.84%
Department Adoptive Home	157	23	180	12.78%
Detention Centers	25	0	25	0.00%
Group Residential Care	710	175	885	19.77%
Kinship/Relative	628	26	654	3.98%
Medical Hospital	2	4	6	66.67%
Psychiatric Facilities (Long Term)	59	80	139	57.55%
Psychiatric Hospital (Short Term)	22	1	23	4.35%
Specialized Family Care (Medley)	38	0	38	0.00%
Specialized Family Care Home-(Medley)	9	0	9	0.00%
Therapeutic Foster Care	891	10	901	1.11%
Transitional Living Client	27	0	27	0.00%
Summary	3842	352	4194	8.39%