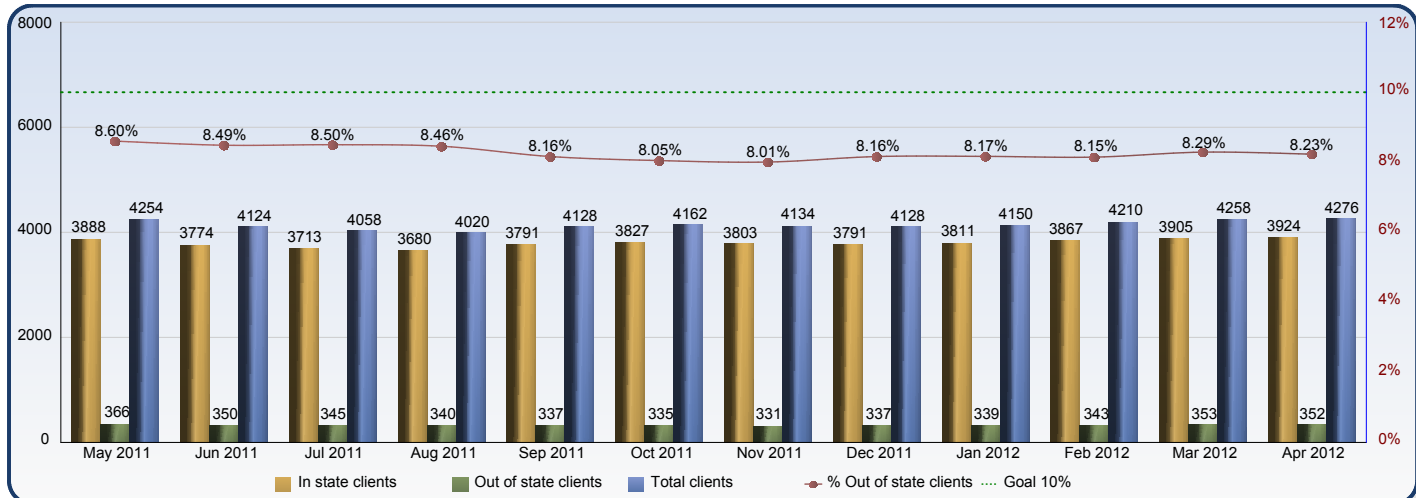




## Foster Care Placements Report



	May 2011	Jun 2011	Jul 2011	Aug 2011	Sep 2011	Oct 2011	Nov 2011	Dec 2011	Jan 2012	Feb 2012	Mar 2012	Apr 2012
<b>In state clients</b>	3888	3774	3713	3680	3791	3827	3803	3791	3811	3867	3905	3924
<b>Out of state clients</b>	366	350	345	340	337	335	331	337	339	343	353	352
<b>Total clients</b>	4254	4124	4058	4020	4128	4162	4134	4128	4150	4210	4258	4276
<b>% Out of state clients</b>	8.60%	8.49%	8.50%	8.46%	8.16%	8.05%	8.01%	8.16%	8.17%	8.15%	8.29%	8.23%

### In state and Out of state clients by Provider type for the month of Apr 2012

Provider Type	In state clients	Out of state clients	Total clients	% Out of state clients
Agency Emergency Shelter	171	0	171	0.00%
Agency Foster Family Care	1155	27	1182	2.28%
Department Adoptive Home	144	22	166	13.25%
Detention Centers	37	0	37	0.00%
Group Residential Care	733	189	922	20.50%
Kinship/Relative	619	27	646	4.18%
Medical Hospital	1	4	5	80.00%
Psychiatric Facilities (Long Term)	64	76	140	54.29%
Psychiatric Hospital (Short Term)	26	0	26	0.00%
Specialized Family Care (Medley)	44	0	44	0.00%
Specialized Family Care Home-(Medley)	9	0	9	0.00%
Therapeutic Foster Care	887	7	894	0.78%
Transitional Living Client	34	0	34	0.00%
<b>Summary</b>	<b>3924</b>	<b>352</b>	<b>4276</b>	<b>8.23%</b>