

## County Profiles – West Virginia Enrollee Rates and Rate of Enrollees Receiving Managed Care in 2020

### REQUEST INFO

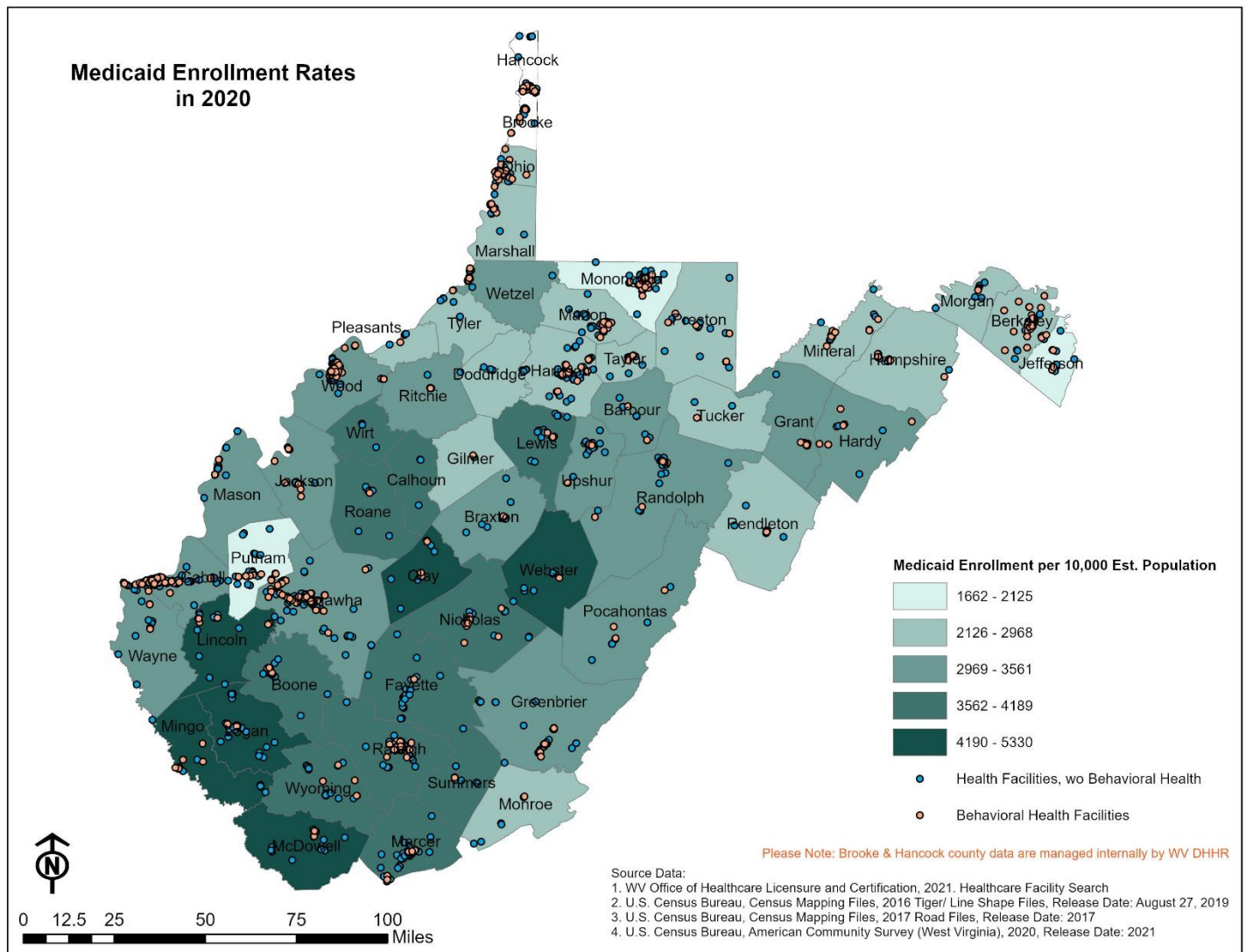
*This analysis was requested by Commissioner Beane of the West Virginia Bureau for Medical Services in July 2021. The specific request was for analysts to create a set of county profiles for all 55 West Virginia counties including overall enrollment and managed care enrollment by different age groups. This analysis utilized the 202106 Medicaid claims data update first available in August 2021, delimited by date for 2020 only. For additional information please contact Shyama Mahakalanda, Director of Health Analytics, West Virginia University Office of Health Affairs ([Shyama.Mahakalanda@hsc.wvu.edu](mailto:Shyama.Mahakalanda@hsc.wvu.edu)).*

### KEY FINDINGS

This analysis calculated the rates of Medicaid enrollment for each of West Virginia's 55 counties, categorized by age group and managed care enrollment. Medicaid enrollment was identified using eligibility data from the West Virginia Medicaid data warehouse.<sup>1</sup> For this analysis, Medicaid enrollees were included in county totals if they were enrolled on December 31, 2020 and had the requisite county code. By restricting enrollment to the last day of calendar year 2020, this analysis eliminates the possibility of double counting enrollees who may have moved through the course of the year. To produce the age group enrollment rates depicted geographically in Figures 1 to 15, county population estimates from the most recent release of the American Community Survey 5-year estimates for 2015 to 2019 were used.<sup>2,3,4</sup> Managed care enrollment was identified using the plan code variable from eligibility data, and enrollment was expressed as rate per 10,000 Medicaid enrollees. To restrict this analysis to include only those individuals who resided in West Virginia on December 31, 2020, enrollment counts were delimited by state code 'WV' and county codes 1 through 55, excluding enrollees with county codes 56, 57, 58, 59, 60, 98, 99 and 999. The latter codes are county codes in Ohio, Maryland, Pennsylvania, Virginia, Kentucky, Out of State, and Unknown. Of note, there are known Medicaid data reporting issues affecting the enrollment numbers for Brooke and Hancock counties, and all counts for these counties were excluded from analysis, tables, and maps. In addition, to comply with Centers for Medicare & Medicaid Services (CMS) guidance on the display of CMS (Medicaid) data, all values between 1 and 10 were excluded from this report.<sup>5</sup>

Figure 1 shows highest overall Medicaid enrollment in Clay, Webster, Lincoln, Logan, Mingo, and McDowell counties. The lowest rate of enrollment per 10,000 residents were Monongalia, Jefferson, Putnam, Doddridge, and Mineral. Overall, there is a trend for counties in the southern and central parts of the state to have a higher percentage of their residents covered by Medicaid than do counties in northeast-central West Virginia or the northern and eastern panhandles.

Figure 1 – 2020 Medicaid Enrollment Rates



Figures 2, 3, and 4 depict rates of enrollment in each of West Virginia's three managed care organizations. Figure 2 shows that MCO 1 is the dominant MCO in the Huntington-Charleston metropolitan areas, with the lightest presence in McDowell, Marshall, Pendleton, Tucker, Grant, Hardy, Mineral and Morgan counties with enrollment ranging from 4,026 to 5,941 MCO enrollees per 10,000 Medicaid enrolled population. The lowest enrollment rates for MCO 1 were in McDowell, Tucker, Grant, Hardy, Pendleton, Mineral and Morgan counties with enrollment rates ranging from 1,465 to 1,956 MCO enrollees per 10,000 Medicaid enrolled population. See Table 1 for details.

Figure 2 – MCO 1 Managed Care Enrollment Rates

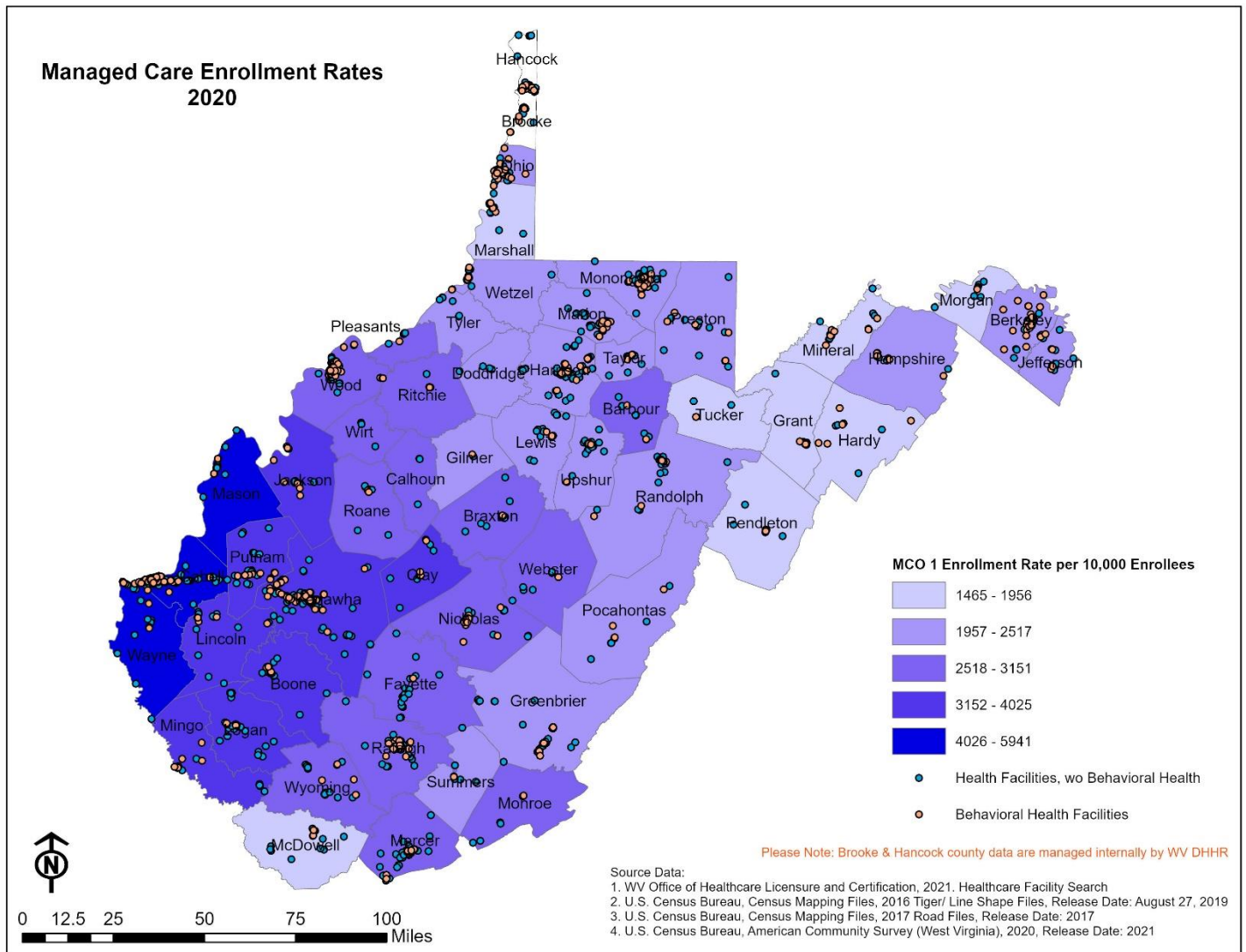


Figure 3 depicts MCO 2 as the prevailing MCO in the eastern panhandle and southeastern part of the state. Mineral County had the highest enrollment rate with 5,465 enrollees per 10,000 Medicaid enrolled population, followed by Morgan, Hardy, Hampshire, and McDowell Counties ranging from 5,155 to 4,857 enrollees per 10,000 Medicaid enrolled population. The lowest enrollment rates for MCO 2 were in Wayne, Cabell, Mason, Marshall, and Ohio counties, with rates ranging from 1,053 to 1,557 MCO enrollees per 10,000 Medicaid enrollees. See Table 1 for further details.

Figure 3 – MCO 2 Managed Care Enrollment Rates

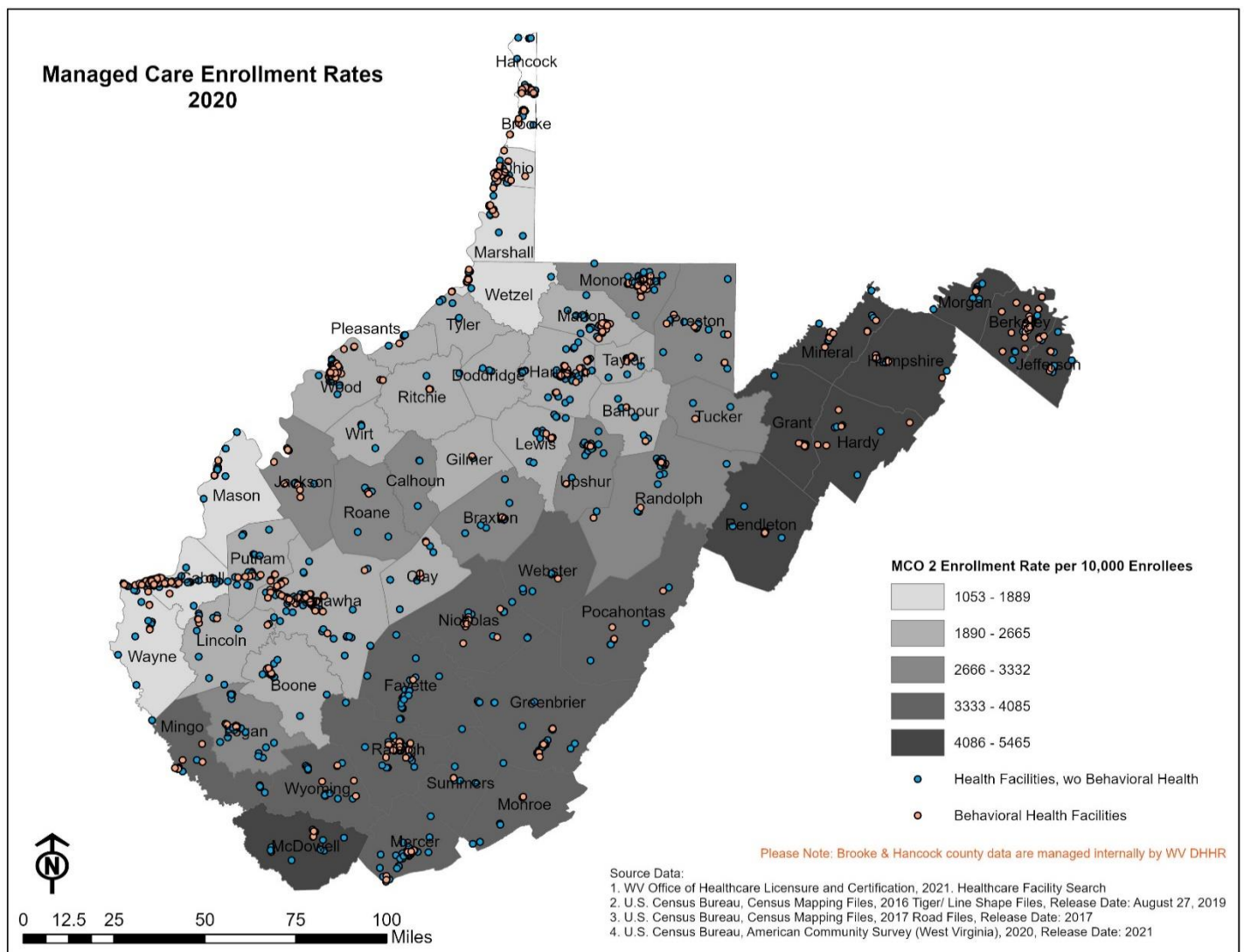


Figure 4 depicts MCO 3 as the largest managed care organization in the northern panhandle and north-central WV. Doddridge, Tyler, Wetzel, Marshall, and Ohio Counties had the highest rates of enrollment ranging from 3,443 to 4,670 MCO enrollees per 10,000 Medicaid enrolled population. The lowest enrollment rates for MCO 3 were in Mineral, Hampshire, Pendleton, Wayne, and Morgan counties, ranging from 747 to 871 MCO enrollees per 10,000 Medicaid enrolled population. See Table 1 for further details.

Figure 4 – MCO 3 Managed Care Enrollment Rate

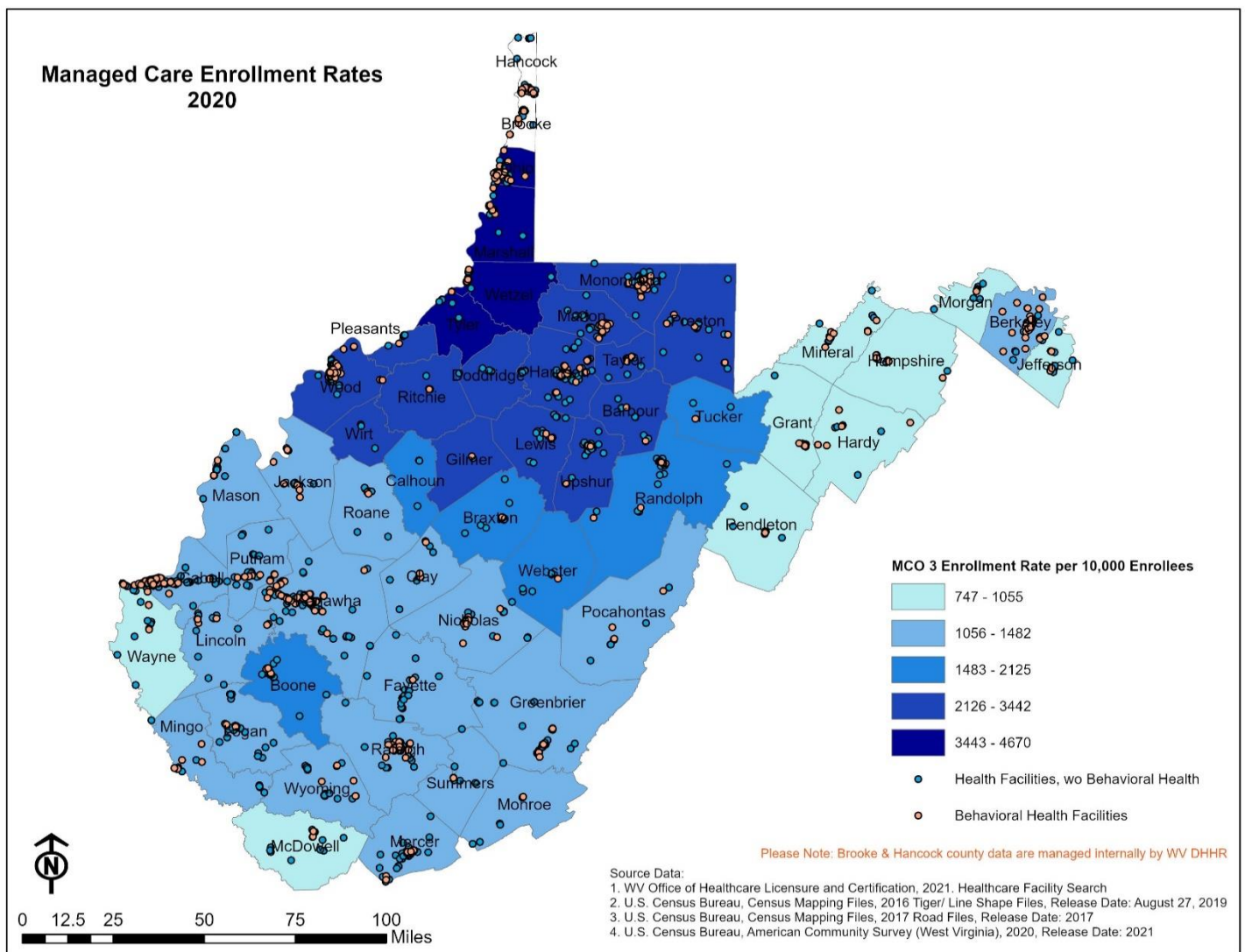


Figure 5 depicts the proportion of Medicaid enrollees covered by non-managed care (fee-for-service) among Medicaid enrollees in each county. Pendleton, Tucker, Calhoun, Grant, and Roane counties had the highest level of fee-for-service coverage (2,650 to 2,957 per 10,000 enrollees), while Berkeley, Tyler, Logan, Monongalia, and Mingo counties had the lowest (1,818 to 2,039 per 10,000 enrollees). See Table 1 for further details.

Figure 5 - Fee for Service Enrollment Rate

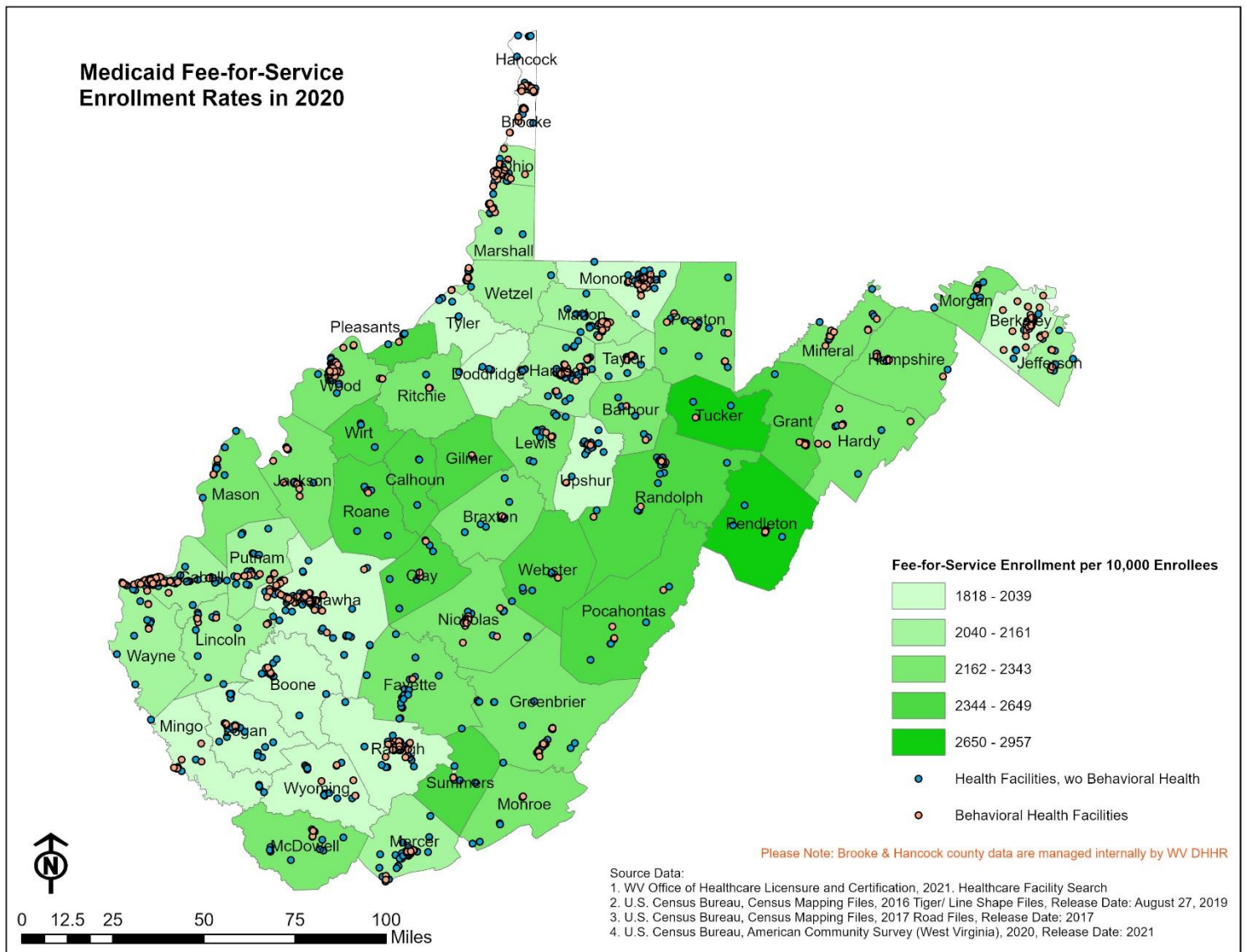


Figure 6 shows the rate of Medicaid enrollment per 1,000 population aged 0 - 4. Summers, Boone, Mingo, Webster, and Grant counties had the highest proportion of 0 - 4-year-old residents covered by Medicaid (729 to 834 enrollees per 1,000 population), while Monongalia, Jefferson, Putnam, Gilmer, and Marshall counties had the lowest enrollment for ages 0-4 (348 to 450 enrollees per 1,000 population). See Table 2 for further details and specific managed care coverage for this age group.

Figure 6 – 2020 Medicaid Enrollment Rates for Ages 0 to 4

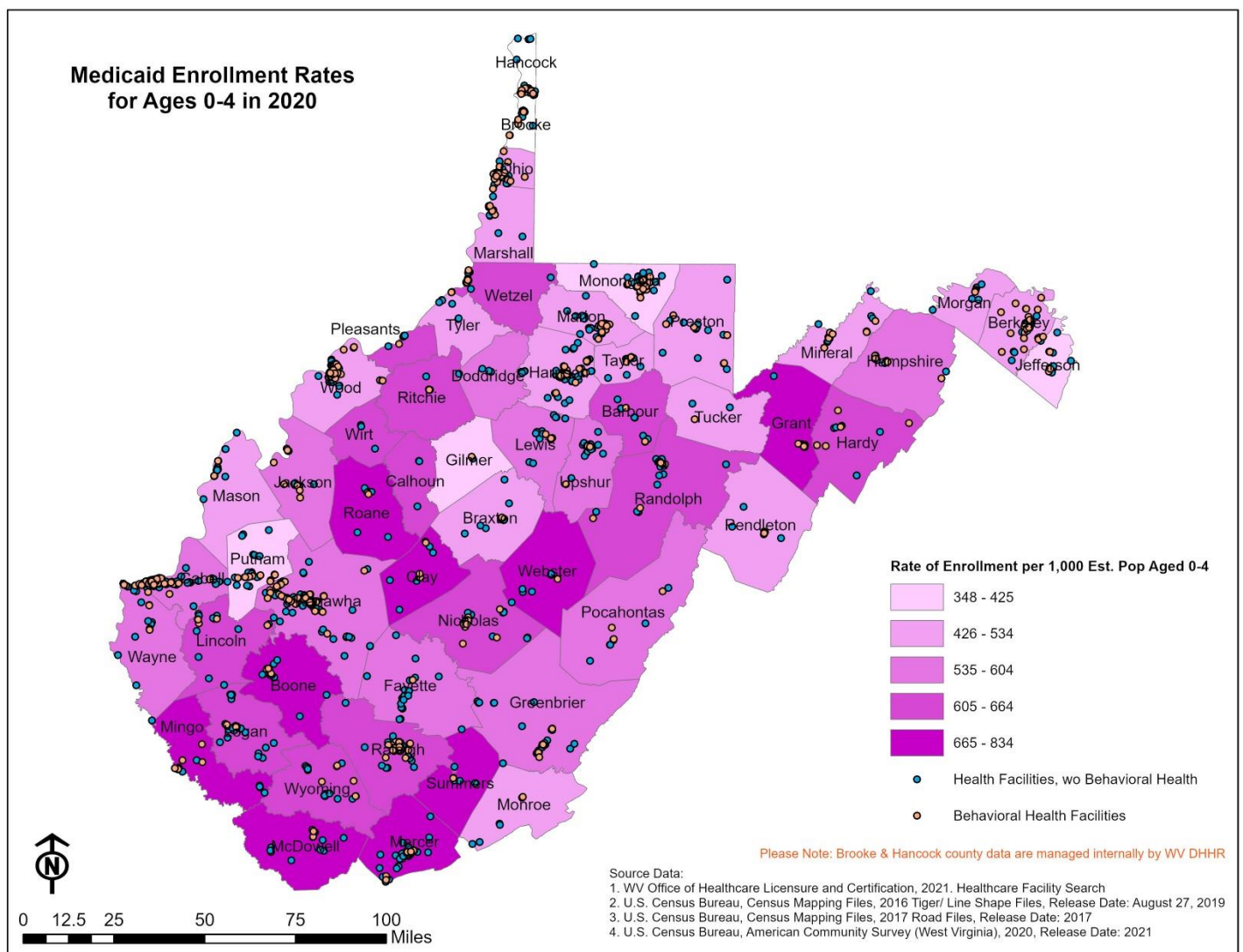


Figure 7 shows that McDowell, Webster, Mingo, Clay, and Summers counties had the highest proportion of 5 - 14-year-old residents covered by Medicaid (699 to 759 enrollees per 1,000 population), while Jefferson, Monongalia, Putnam, Marshall, and Pendleton counties had the lowest enrollment rates for this age group (294 to 442 enrollees per 1,000 population). Higher enrollment rates for this age group can be observed in the southern and central counties. See Table 3 for further details and specific managed care coverage.

Figure 7 – 2020 Medicaid Enrollment Rates for Ages 5 to 14

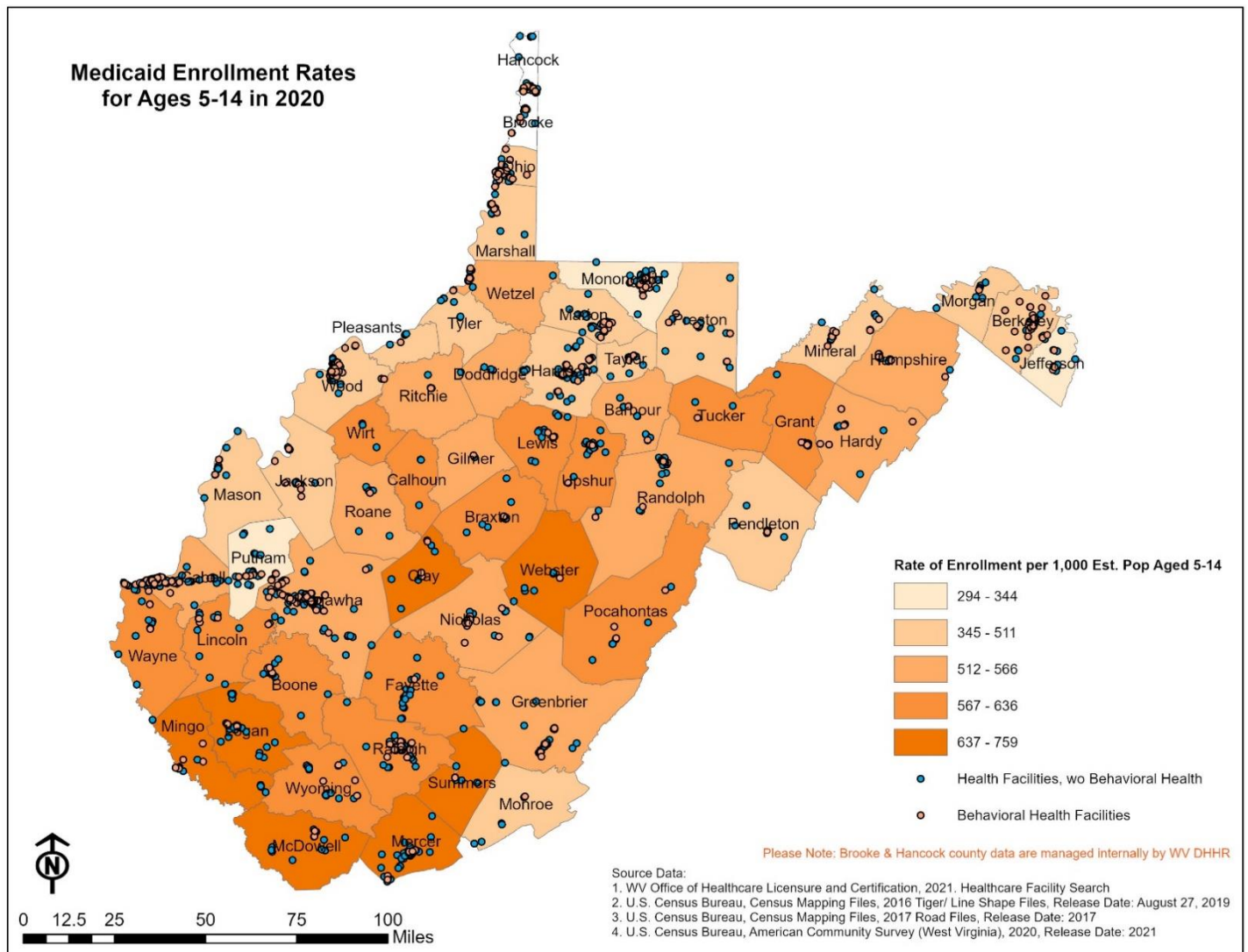




Figure 8 depicts the rate of Medicaid enrollment per 1,000 population aged 15 - 24. McDowell, Mingo, Webster, Logan, and Calhoun counties had the highest proportion of 15 - 24-year-old residents covered by Medicaid (642 to 738 enrollees per 1,000 population), while Monongalia, Jefferson, Gilmer, Doddridge, and Ohio counties had the lowest rates ranging from 113 to 274 enrollees per 1,000 population. See Table 4 for further details and specific managed care coverage for this age group.

Figure 8 – 2020 Medicaid Enrollment Rates for Ages 15 to 24

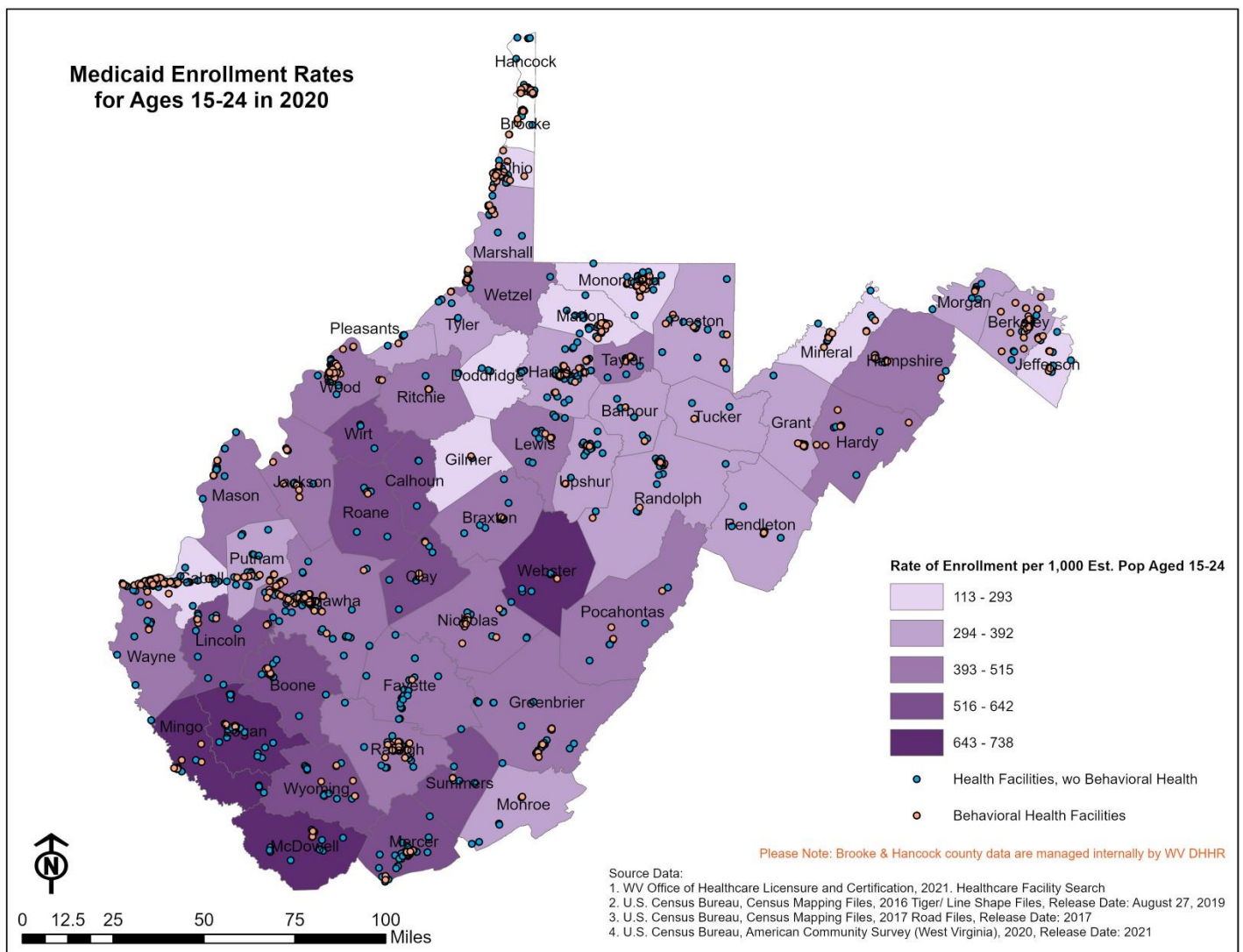
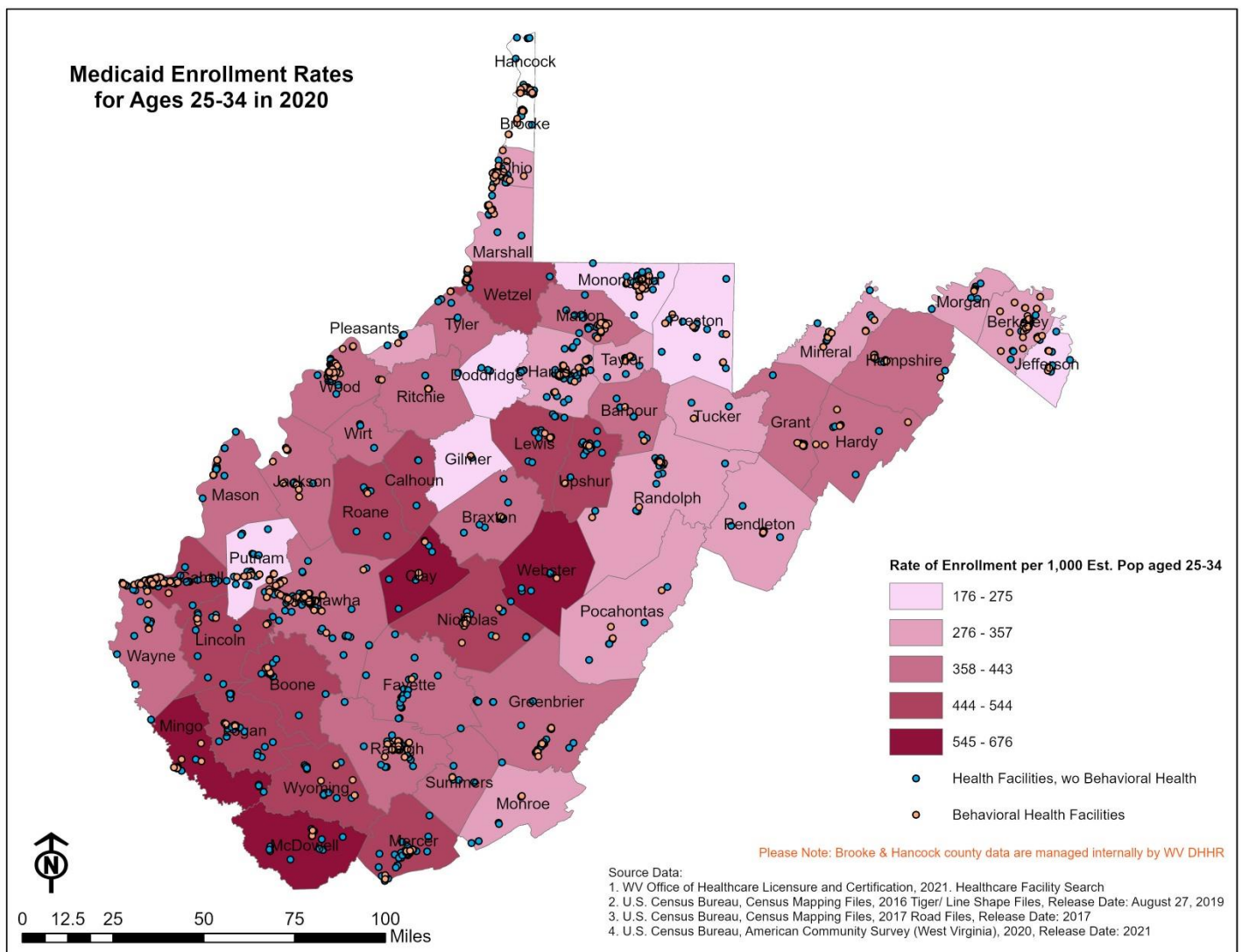


Figure 9 shows the rate of Medicaid enrollment per 1,000 population aged 25 - 34. Clay, Webster, McDowell, Mingo, and Lincoln counties had the highest proportion of 25 - 34-year-old residents covered by Medicaid with rates between 545 and 676 enrollees per 1,000 population, while Monongalia, Gilmer, Jefferson, Putnam, and Doddridge counties had the lowest enrollment with rates ranging from 176 to 266 enrollees per 1,000 population. See Table 5 for further details and specific managed care coverage for this age group.

Figure 9 – 2020 Medicaid Enrollment Rates for Ages 25 to 34



In Figure 10 the rate of Medicaid enrollment per 1,000 population aged 35 – 44 shows that Webster, McDowell, Mingo, Clay, and Logan counties had the highest proportion of 35 - 44-year-old residents covered by Medicaid ranging from 509 to 616 enrollees per 1,000 population, while Jefferson, Monongalia, Putnam, Gilmer, and Berkeley counties had the lowest with rates between 172 and 236 enrollees per 1,000 population. See Table 6 for further details and specific managed care coverage for this age group.

Figure 10 – 2020 Medicaid Enrollment Rates for Ages 35 to 44

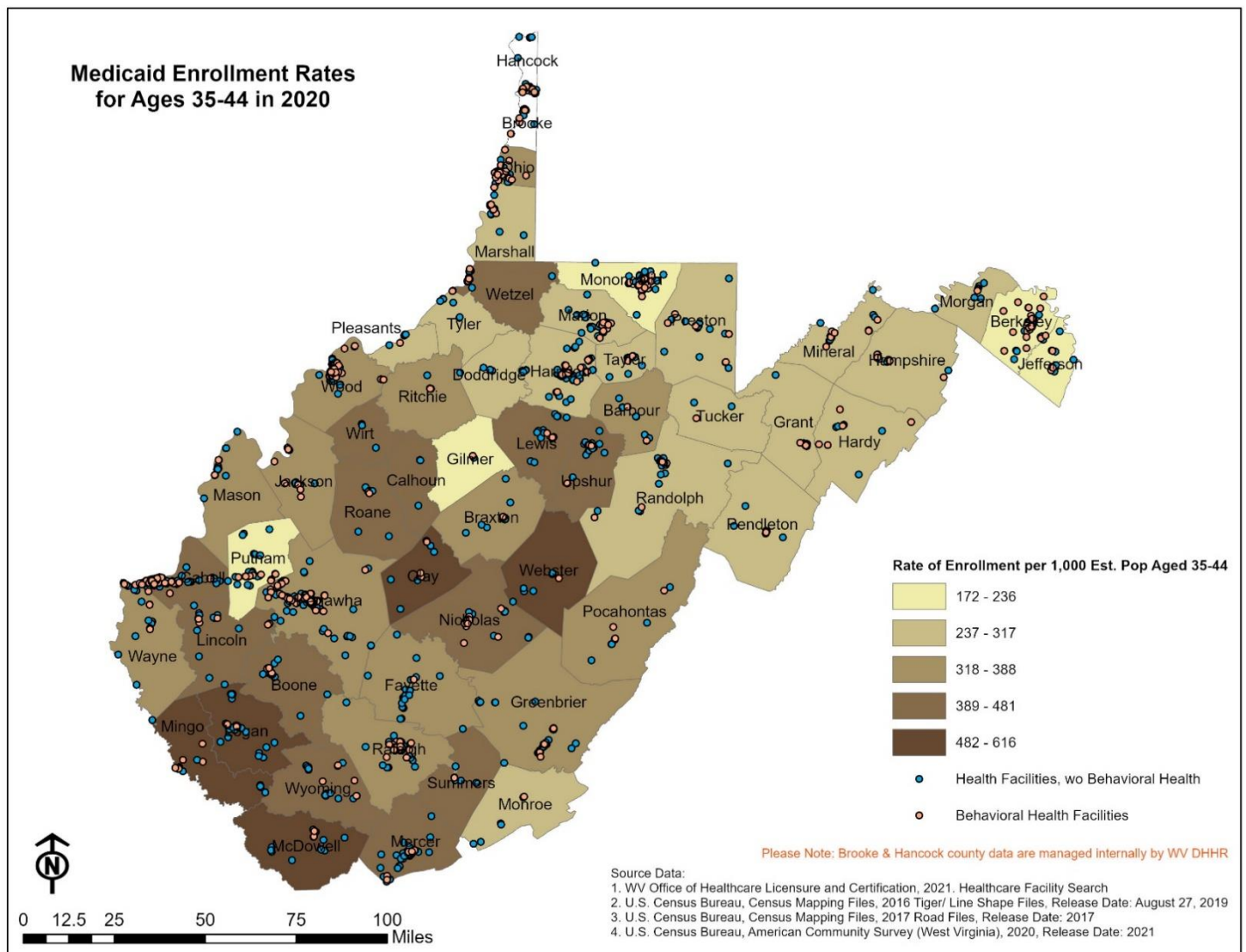
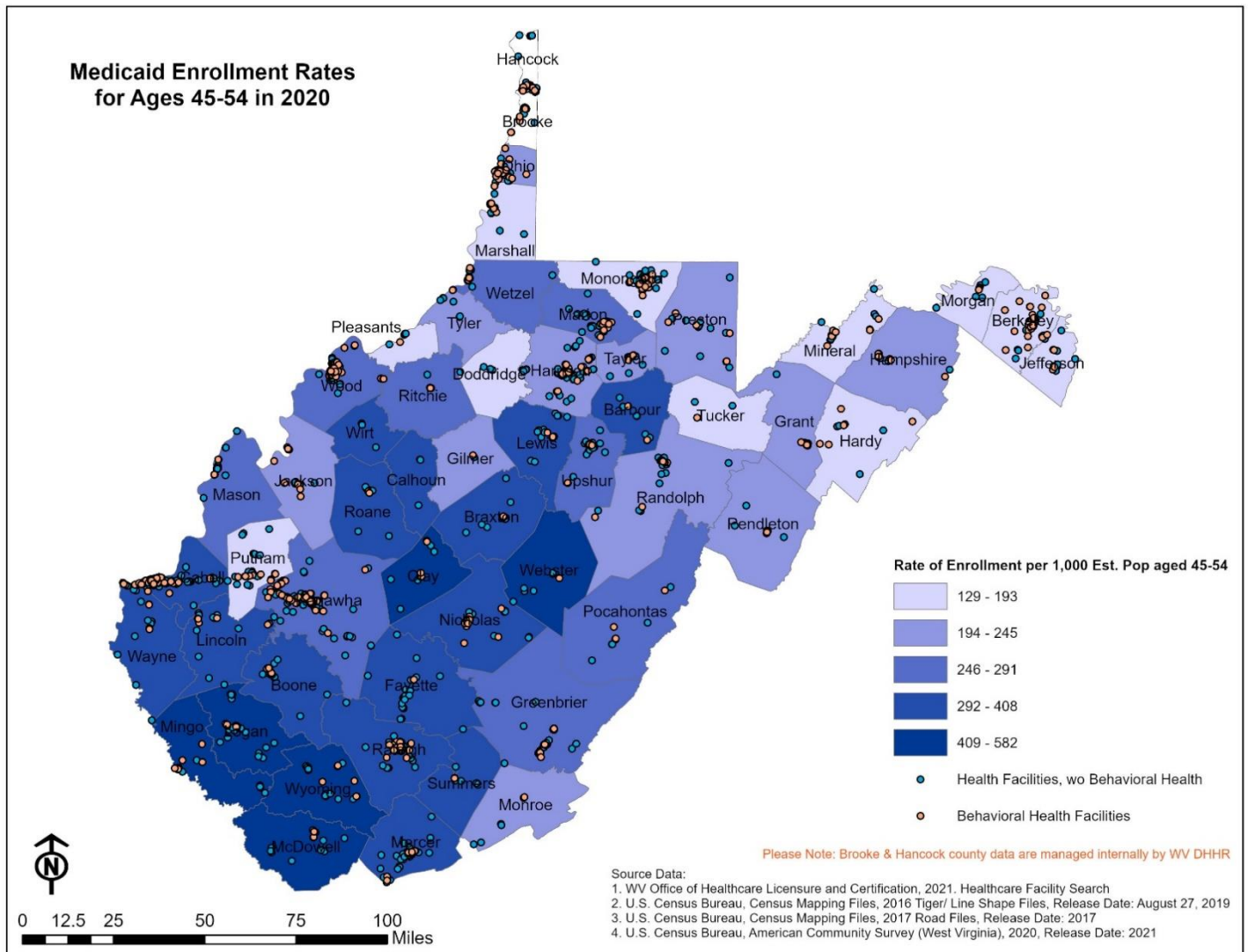


Figure 11 shows the rate of Medicaid enrollment per 1,000 population aged 45 - 54. McDowell, Mingo, Webster, Logan, and Clay counties had the highest proportion of their 45 - 54-year-old residents covered by Medicaid (458 to 582 enrollees per 1,000 population), while Jefferson, Monongalia, Putnam, Morgan, and Berkeley counties had the lowest. See Table 7 for further details and specific managed care coverage for this age group.

Figure 11 – 2020 Medicaid Enrollment Rates for Ages 45 to 54



In Figure 12 it can be see that the highest proportion of 55 - 64-year-old residents covered by Medicaid were in McDowell, Webster, Mingo, Clay, and Lincoln counties (381 to 446 enrollees per 1,000 population), while Monongalia, Jefferson, Putnam, Marshall, and Berkeley counties had the lowest (140 to 182 enrollees per 1,000 population). See Table 8 for further details and specific managed care coverage for this age group.

Figure 12 – 2020 Medicaid Enrollment Rates for Ages 55 to 64

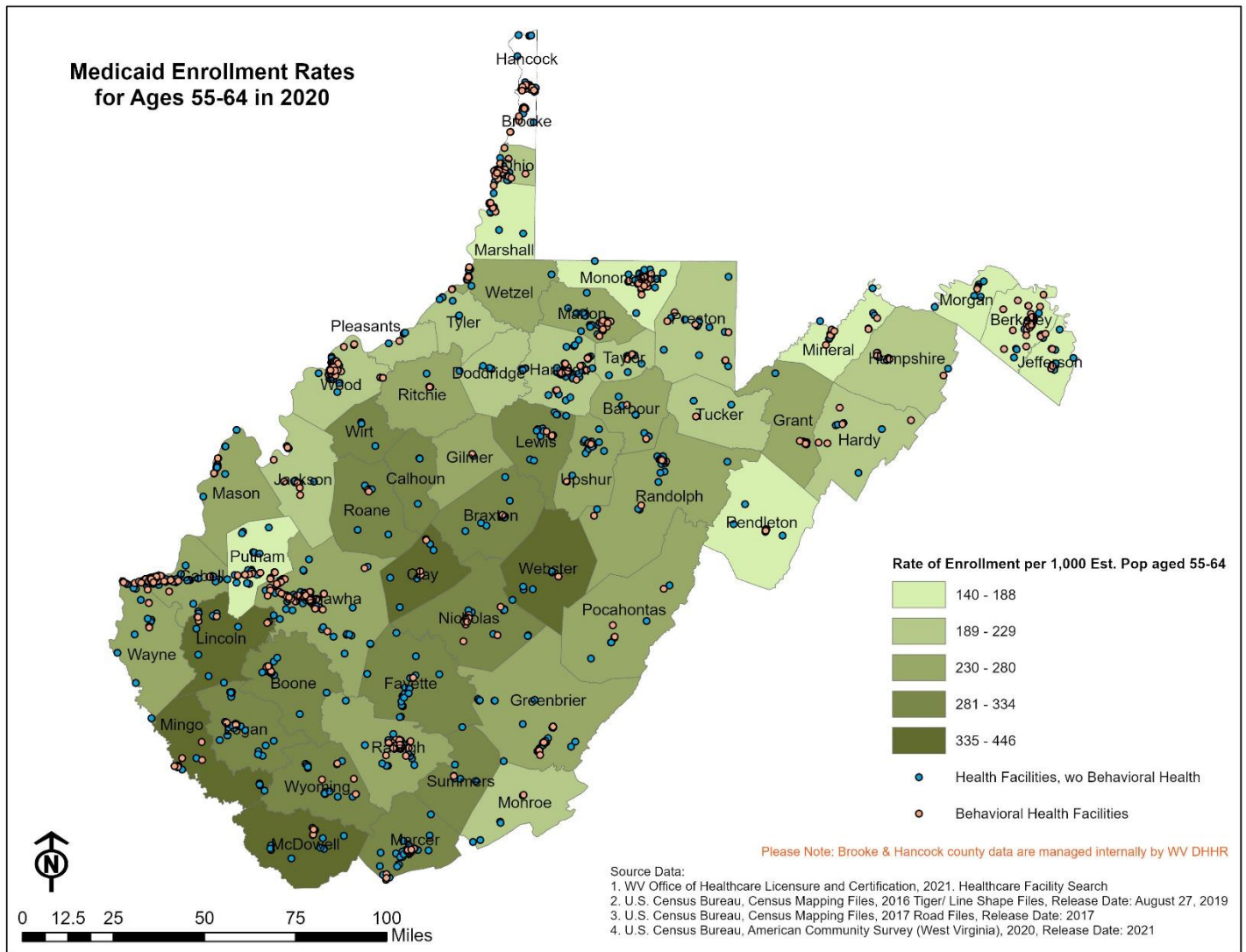


Figure 13 shows the rate of Medicaid enrollment per 1,000 population aged 65 - 74. Clay, McDowell, Webster, Mingo, and Calhoun counties had the highest proportion of their 65 - 74-year-old residents covered by Medicaid (220 to 276 enrollees per 1,000 population), while Monongalia, Putnam, Morgan, Jefferson, and Monroe counties had the lowest (80 to 96 enrollees per 1,000 population). See Table 9 for further details and specific managed care coverage for this age group.

Figure 13 – 2020 Medicaid Enrollment Rates for Ages 65 to 74

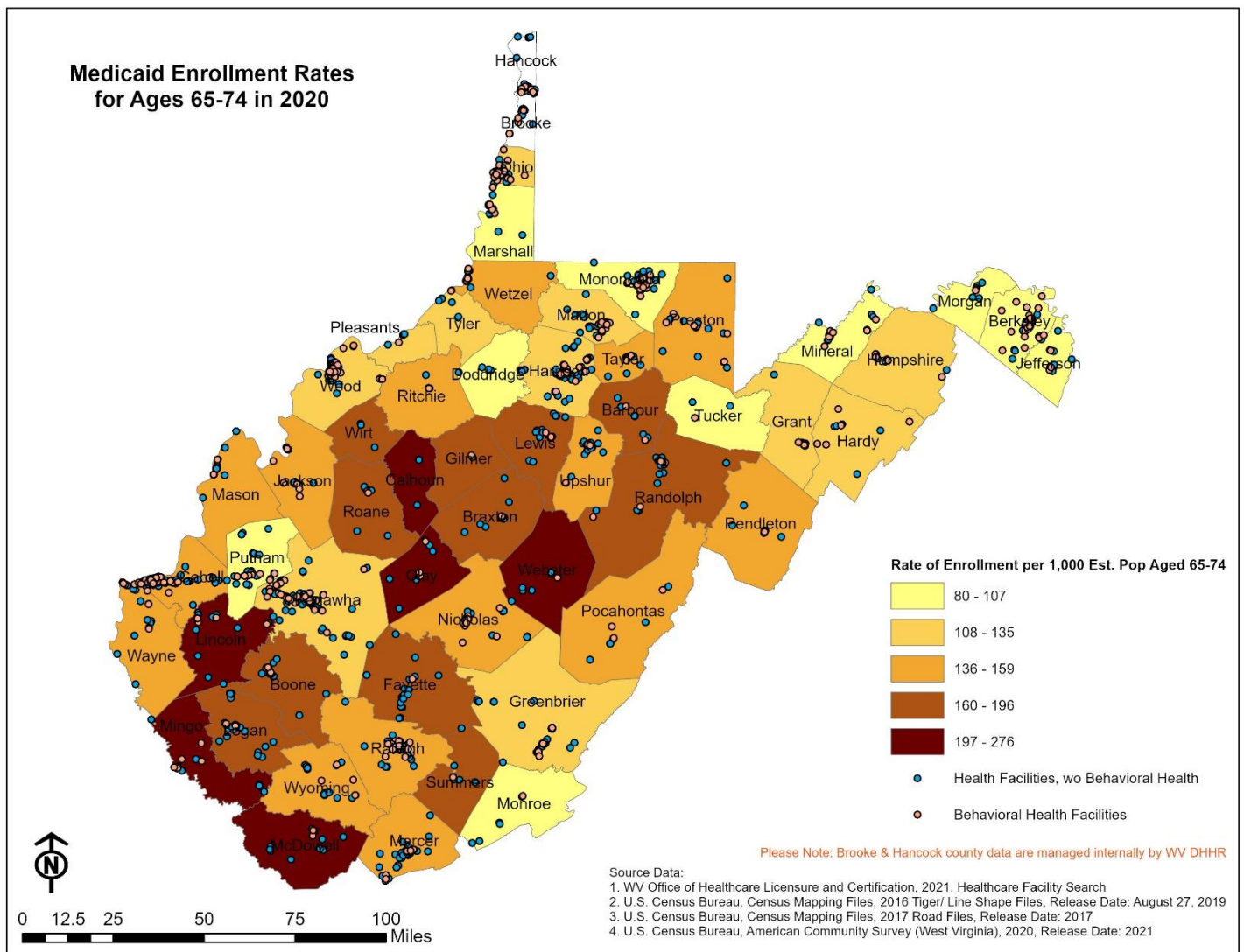


Figure 14 shows the rate of Medicaid enrollment per 1,000 population aged 75 – 84. Webster County has the highest rate of enrollment at 280 enrollees per 1,000 estimated population. The lowest enrollment rate is in Monongalia County at 73 enrollees per 1,000 population for ages 75 to 84.

Figure 14 – 2020 Medicaid Enrolment Rates for Ages 75 to 84

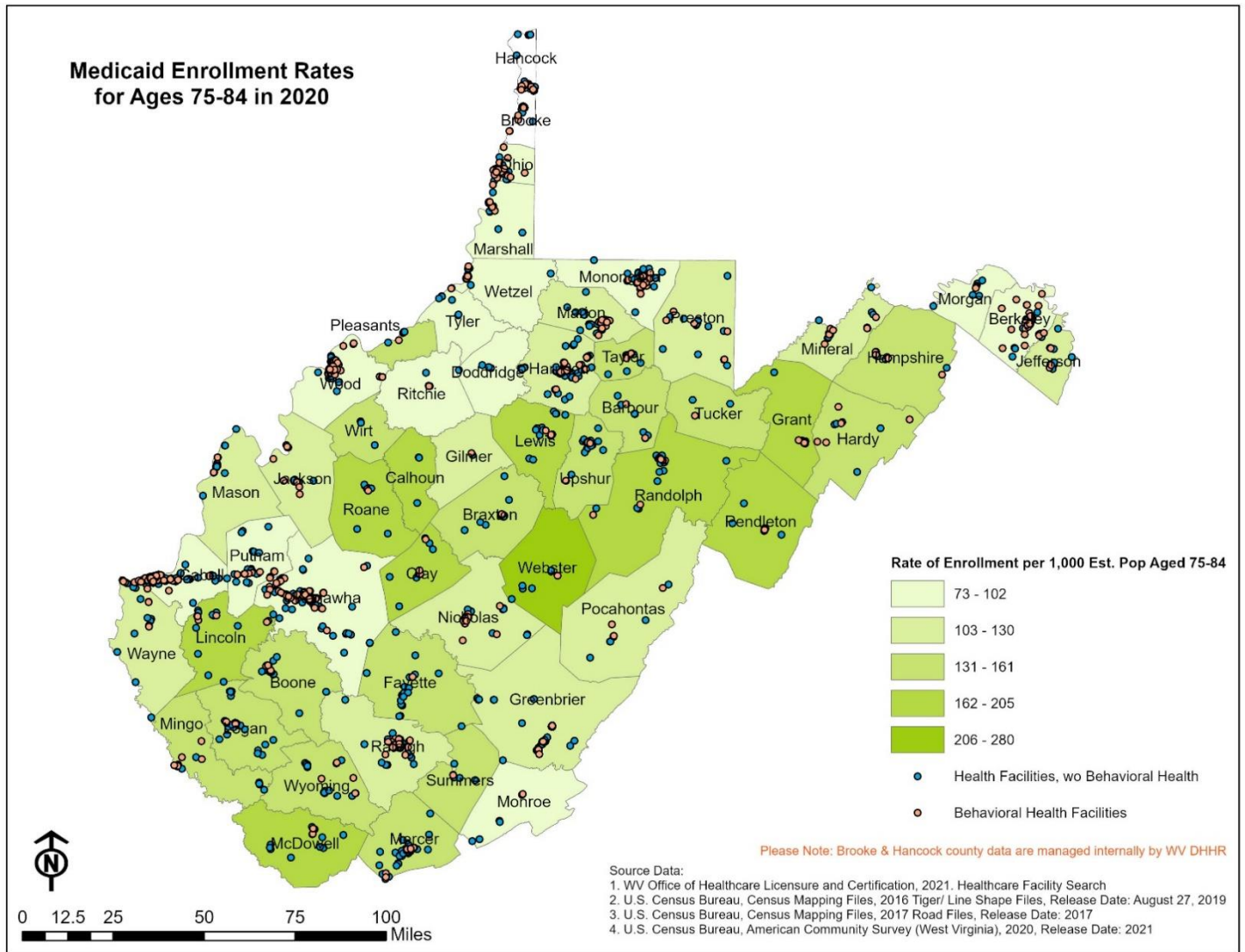


Figure 15 shows the rate of Medicaid enrollment per 1,000 population aged 85+. Clay county has the highest rate of enrollment at 521 per 1,000 estimated population, followed by Wirt, Lincoln, Roane, Calhoun, Gilmer, Braxton, Webster, Tucker and Pendleton Counties. The lowest enrollment rate is in Doddridge County, with 87 enrollees per 1,000 population aged 85 and older.

Figure 15 – 2020 Medicaid Enrollment Rates for Ages 85+

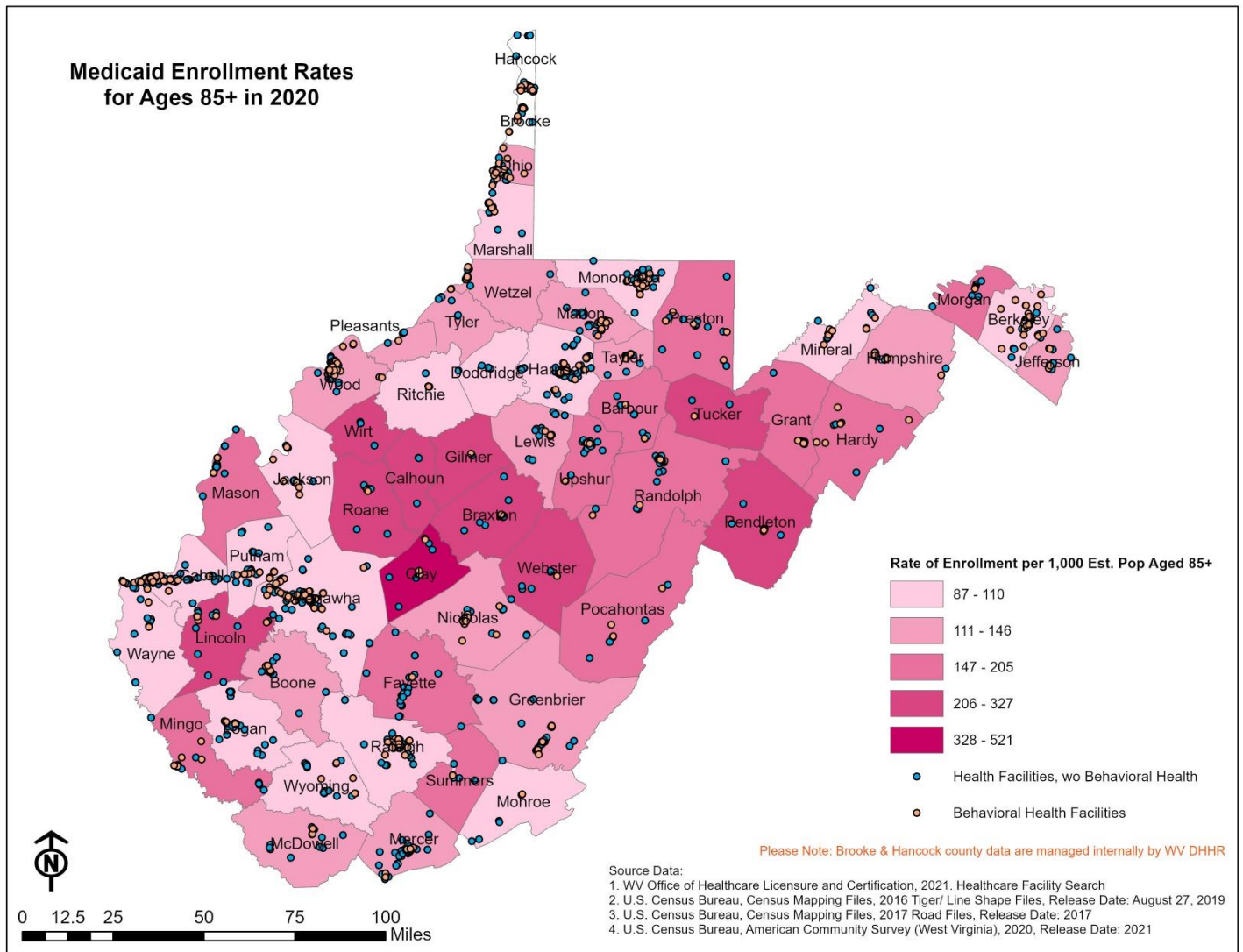




Table 1 – West Virginia Medicaid Total Enrollment Rates & Enrollment Rates by Managed Care Organization for 2020

County	Estimated population: ACS 2015-2019	Total number enrolled in Medicaid	Medicaid enrollment rate per 10,000	Number enrolled in MCO 1	MCO 1 enrollment rate per 10,000	Number enrolled in MCO 2	MCO 2 enrollment rate per 10,000	Number enrolled in MCO 3	MCO 3 enrollment rate per 10,000	Number enrolled in FFS	FFS enrollment rate per 10,000
Barbour County	16,633	5,674	3,411	1,504	2,651	1,400	2,467	1,466	2,584	1,304	2,298
Berkeley County	115,329	31,307	2,715	7,493	2,393	14,404	4,601	3,718	1,188	5,692	1,818
Boone County	22,368	9,371	4,189	3,508	3,743	2,462	2,627	1,532	1,635	1,869	1,994
Braxton County	14,190	4,960	3,495	1,436	2,895	1,533	3,091	829	1,671	1,162	2,343
Brooke County*	*	*	*	*	*	*	*	*	*	*	*
Cabell County	94,339	31,609	3,351	17,063	5,398	4,218	1,334	3,566	1,128	6,762	2,139
Calhoun County	7,295	2,911	3,990	843	2,896	819	2,813	478	1,642	771	2,649
Clay County	8,709	4,299	4,936	1,649	3,836	1,013	2,356	606	1,410	1,031	2,398
Doddridge County	8,560	2,077	2,426	455	2,191	490	2,359	715	3,442	417	2,008
Fayette County	43,576	15,933	3,656	4,842	3,039	5,423	3,404	2,077	1,304	3,591	2,254
Gilmer County	8,041	2,100	2,612	494	2,352	530	2,524	572	2,724	504	2,400
Grant County	11,616	3,653	3,145	632	1,730	1,748	4,785	322	881	951	2,603
Greenbrier County	35,155	11,444	3,255	2,880	2,517	4,568	3,992	1,490	1,302	2,506	2,190
Hampshire County	23,309	6,918	2,968	1,428	2,064	3,416	4,938	553	799	1,521	2,199
Hancock County*	*	*	*	*	*	*	*	*	*	*	*
Hardy County	13,805	4,163	3,016	648	1,557	2,136	5,131	439	1,055	940	2,258
Harrison County	67,908	19,829	2,920	4,490	2,264	4,769	2,405	6,446	3,251	4,124	2,080
Jackson County	28,907	9,018	3,120	3,079	3,414	2,702	2,996	1,248	1,384	1,989	2,206
Jefferson County	56,506	10,943	1,937	2,249	2,055	5,176	4,730	1,155	1,055	2,363	2,159
Kanawha County	183,279	61,687	3,366	24,314	3,942	15,657	2,538	9,143	1,482	12,573	2,038
Lewis County	16,166	6,341	3,922	1,398	2,205	1,663	2,623	1,877	2,960	1,403	2,213
Lincoln County	20,850	9,428	4,522	3,729	3,955	2,513	2,665	1,165	1,236	2,021	2,144
Logan County	33,154	15,051	4,540	5,096	3,386	5,015	3,332	2,039	1,355	2,901	1,927
Marion County	56,355	16,620	2,949	3,781	2,275	4,099	2,466	5,308	3,194	3,432	2,065
Marshall County	31,308	7,852	2,508	1,423	1,812	1,113	1,417	3,667	4,670	1,649	2,100
Mason County	26,820	8,566	3,194	4,549	5,311	1,148	1,340	987	1,152	1,882	2,197
McDowell County	18,661	9,946	5,330	1,945	1,956	4,831	4,857	930	935	2,240	2,252
Mercer County	59,919	25,016	4,175	6,789	2,714	9,436	3,772	3,512	1,404	5,279	2,110
Mineral County	27,167	6,642	2,445	973	1,465	3,630	5,465	496	747	1,543	2,323
Mingo County	24,290	12,696	5,227	4,366	3,439	4,370	3,442	1,458	1,148	2,502	1,971
Monongalia County	105,474	17,530	1,662	4,280	2,442	4,898	2,794	4,934	2,815	3,418	1,950

County	Estimated population: ACS 2015-2019	Total number enrolled in Medicaid	Medicaid enrollment rate per 10,000	Number enrolled in MCO 1	MCO 1 enrollment rate per 10,000	Number enrolled in MCO 2	MCO 2 enrollment rate per 10,000	Number enrolled in MCO 3	MCO 3 enrollment rate per 10,000	Number enrolled in FFS	FFS enrollment rate per 10,000
Monroe County	13,401	3,511	2,620	907	2,583	1,419	4,042	417	1,188	768	2,187
Morgan County	17,709	4,388	2,478	767	1,748	2,262	5,155	382	871	977	2,227
Nicholas County	25,078	9,335	3,722	2,941	3,151	3,164	3,389	1,162	1,245	2,068	2,215
Ohio County	42,143	11,585	2,749	2,429	2,097	1,804	1,557	4,878	4,211	2,474	2,136
Pendleton County	7,001	1,924	2,748	282	1,466	917	4,766	156	811	569	2,957
Pleasants County	7,482	2,104	2,812	542	2,576	460	2,186	596	2,833	506	2,405
Pocahontas County	8,450	2,680	3,172	610	2,276	1,041	3,884	374	1,396	655	2,444
Preston County	33,683	9,068	2,692	1,971	2,174	2,570	2,834	2,470	2,724	2,057	2,268
Putnam County	56,610	12,032	2,125	4,843	4,025	3,153	2,621	1,486	1,235	2,550	2,119
Raleigh County	75,252	27,717	3,683	8,217	2,965	10,338	3,730	3,559	1,284	5,603	2,022
Randolph County	28,930	9,115	3,151	2,240	2,457	2,600	2,852	1,937	2,125	2,338	2,565
Ritchie County	9,844	3,277	3,329	868	2,649	761	2,322	925	2,823	723	2,206
Roane County	14,020	5,506	3,927	1,548	2,811	1,757	3,191	784	1,424	1,417	2,574
Summers County	12,848	4,928	3,836	1,105	2,242	2,013	4,085	586	1,189	1,224	2,484
Taylor County	16,864	4,886	2,897	1,153	2,360	1,202	2,460	1,475	3,019	1,056	2,161
Tucker County	6,982	1,811	2,594	346	1,911	582	3,214	348	1,922	535	2,954
Tyler County	8,811	2,522	2,862	560	2,220	527	2,090	955	3,787	480	1,903
Upshur County	24,502	8,535	3,483	1,940	2,273	2,376	2,784	2,505	2,935	1,714	2,008
Wayne County	40,303	14,351	3,561	8,526	5,941	1,511	1,053	1,238	863	3,076	2,143
Webster County	8,386	4,403	5,250	1,167	2,650	1,503	3,414	685	1,556	1,048	2,380
Wetzel County	15,436	5,452	3,532	1,165	2,137	1,030	1,889	2,100	3,852	1,157	2,122
Wirt County	5,798	2,246	3,874	619	2,756	529	2,355	542	2,413	556	2,476
Wood County	84,960	26,842	3,159	7,754	2,889	6,033	2,248	7,060	2,630	5,995	2,233
Wyoming County	21,281	8,711	4,093	2,255	2,589	3,507	4,026	1,173	1,347	1,776	2,039

\*Enrollment data for Brooke and Hancock counties are managed by WV DHHR - please refer to internal data.

\*\*Note: MCO totals do not include >74 age group.

Table 2 – Medicaid Enrollment & Managed Care Enrollment for 2020 - Ages 0 to 4

County	Estimated population: ACS 2015-2019	Total number enrolled in Medicaid	Medicaid enrollment rate per 1,000	Number enrolled in MCO 1	MCO 1 enrollment rate per 1,000	Number enrolled in MCO 2	MCO 2 enrollment rate per 1,000	Number enrolled in MCO 3	MCO 3 enrollment rate per 1,000	Number enrolled in FFS	FFS enrollment rate per 1,000
Barbour County	853	541	634	211	390	153	283	145	268	32	59
Berkeley County	7,147	3,701	518	1,116	302	1,859	502	502	136	224	61
Boone County	1,105	826	748	405	490	262	317	133	161	26	31
Braxton County	734	379	516	153	404	129	340	83	219	14	37
Brooke County*	*	*	*	*	*	*	*	*	*	*	*
Cabell County	5,281	2,883	546	1,978	686	424	147	320	111	161	56
Calhoun County	352	218	619	97	445	69	317	39	179	13	60
Clay County	493	344	698	174	506	102	297	58	169	**	29
Doddridge County	328	196	598	58	296	53	270	81	413	**	20
Fayette County	2,499	1,407	563	595	423	538	382	217	154	57	41
Gilmer County	386	164	425	55	335	49	299	54	329	**	37
Grant County	587	428	729	125	292	235	549	46	107	22	51
Greenbrier County	1,818	1,058	582	342	323	489	462	176	166	51	48
Hampshire County	1,110	664	598	201	303	383	577	44	66	36	54
Hancock County*	*	*	*	*	*	*	*	*	*	*	*
Hardy County	746	457	613	72	158	295	646	52	114	38	83
Harrison County	3,887	1,973	508	654	331	558	283	660	335	101	51
Jackson County	1,554	901	580	406	451	291	323	149	165	55	61
Jefferson County	3,104	1,088	351	300	276	570	524	154	142	64	59
Kanawha County	9,907	5,710	576	2,821	494	1,701	298	958	168	230	40
Lewis County	991	586	591	176	300	186	317	203	346	21	36
Lincoln County	1,197	753	629	391	519	231	307	93	124	38	50
Logan County	1,880	1,232	655	501	407	509	413	178	144	44	36
Marion County	3,246	1,549	477	490	316	443	286	541	349	75	48
Marshall County	1,590	716	450	190	265	123	172	365	510	38	53
Mason County	1,488	784	527	518	661	121	154	105	134	40	51
McDowell County	1,027	708	689	233	329	396	559	57	81	22	31
Mercer County	3,426	2,346	685	915	390	878	374	469	200	84	36
Mineral County	1,366	644	471	105	163	458	711	50	78	31	48
Mingo County	1,454	1,073	738	405	377	485	452	133	124	50	47
Monongalia County	5,289	1,843	348	594	322	586	318	539	292	124	67
Monroe County	614	316	515	114	361	133	421	55	174	14	44

County	Estimated population: ACS 2015-2019	Total number enrolled in Medicaid	Medicaid enrollment rate per 1,000	Number enrolled in MCO 1	MCO 1 enrollment rate per 1,000	Number enrolled in MCO 2	MCO 2 enrollment rate per 1,000	Number enrolled in MCO 3	MCO 3 enrollment rate per 1,000	Number enrolled in FFS	FFS enrollment rate per 1,000
Morgan County	803	418	521	110	263	241	577	47	112	20	48
Nicholas County	1,280	847	662	345	407	345	407	126	149	31	37
Ohio County	2,173	1,074	494	303	282	226	210	485	452	60	56
Pendleton County	315	161	511	40	248	94	584	16	99	11	68
Pleasants County	339	213	628	78	366	57	268	70	329	**	38
Pocahontas County	405	233	575	71	305	102	438	40	172	20	86
Preston County	1,742	871	500	264	303	318	365	250	287	39	45
Putnam County	3,074	1,143	372	513	449	398	348	175	153	57	50
Raleigh County	4,009	2,617	653	998	381	1,131	432	388	148	100	38
Randolph County	1,495	923	617	350	379	309	335	228	247	36	39
Ritchie County	464	302	651	126	417	73	242	98	325	**	17
Roane County	671	473	705	198	419	153	323	92	195	30	63
Summers County	483	403	834	117	290	197	489	69	171	20	50
Taylor County	884	425	481	152	358	129	304	129	304	15	35
Tucker County	316	153	484	43	281	55	359	39	255	16	105
Tyler County	447	235	526	79	336	57	243	89	379	**	43
Upshur County	1,333	780	585	241	309	258	331	253	324	28	36
Wayne County	2,075	1,253	604	868	693	183	146	124	99	78	62
Webster County	414	302	729	115	381	125	414	58	192	**	13
Wetzel County	776	515	664	148	287	127	247	216	419	24	47
Wirt County	292	179	613	61	341	54	302	56	313	**	45
Wood County	4,835	2,583	534	954	369	702	272	807	312	120	46
Wyoming County	1,076	693	644	257	371	308	444	102	147	26	38

\*Enrollment data for Brooke and Hancock counties are managed by WV DHHR - please refer to internal data.

\*\*Note: Values between 1 and 10 are not reported.

Table 3 – Medicaid Enrollment & Managed Care Enrollment for 2020 - Ages 5 to 14

County	Estimated population: ACS 2015-2019	Total number enrolled in Medicaid	Medicaid enrollment rate per 1,000	Number enrolled in MCO 1	MCO 1 enrollment rate per 1,000	Number enrolled in MCO 2	MCO 2 enrollment rate per 1,000	Number enrolled in MCO 3	MCO 3 enrollment rate per 1,000	Number enrolled in FFS	FFS enrollment rate per 1,000
Barbour County	1,873	1,056	564	461	437	262	248	305	289	28	27
Berkeley County	15,378	7,071	460	1,821	258	4,259	602	671	95	320	45
Boone County	2,789	1,624	582	868	534	534	329	176	108	46	28
Braxton County	1,581	911	576	420	461	326	358	132	145	33	36
Brooke County*	*	*	*	*	*	*	*	*	*	*	*
Cabell County	10,308	5,366	521	4,228	788	493	92	409	76	236	44
Calhoun County	863	517	599	246	476	166	321	84	162	21	41
Clay County	1,121	805	718	483	600	223	277	75	93	24	30
Doddridge County	720	390	542	106	272	121	310	147	377	16	41
Fayette County	5,027	2,978	592	1,334	448	1,304	438	250	84	90	30
Gilmer County	638	345	541	112	325	104	301	111	322	18	52
Grant County	1,202	692	576	174	251	458	662	43	62	17	25
Greenbrier County	3,843	2,175	566	663	305	1,186	545	247	114	79	36
Hampshire County	2,495	1,325	531	352	266	852	643	66	50	55	42
Hancock County*	*	*	*	*	*	*	*	*	*	*	*
Hardy County	1,566	826	527	134	162	586	709	72	87	34	41
Harrison County	8,169	3,802	465	1,124	296	1,025	270	1,548	407	105	28
Jackson County	3,549	1,741	491	875	503	602	346	194	111	70	40
Jefferson County	7,309	2,150	294	488	227	1,341	624	193	90	128	60
Kanawha County	20,567	11,288	549	6,266	555	3,527	312	1,087	96	408	36
Lewis County	1,897	1,201	633	406	338	364	303	396	330	35	29
Lincoln County	2,727	1,735	636	976	563	589	339	114	66	56	32
Logan County	3,742	2,474	661	1,122	454	1,089	440	180	73	83	34
Marion County	6,167	3,106	504	965	311	888	286	1,158	373	95	31
Marshall County	3,473	1,533	441	388	253	281	183	787	513	77	50
Mason County	3,235	1,652	511	1,242	752	223	135	135	82	52	31
McDowell County	2,146	1,628	759	497	305	990	608	107	66	34	21
Mercer County	6,776	4,599	679	1,867	406	2,017	439	556	121	159	35
Mineral County	3,026	1,353	447	224	166	997	737	71	52	61	45
Mingo County	2,955	2,162	732	994	460	919	425	172	80	77	36
Monongalia County	9,337	3,124	335	915	293	1,033	331	1,009	323	167	53

County	Estimated population: ACS 2015-2019	Total number enrolled in Medicaid	Medicaid enrollment rate per 1,000	Number enrolled in MCO 1	MCO 1 enrollment rate per 1,000	Number enrolled in MCO 2	MCO 2 enrollment rate per 1,000	Number enrolled in MCO 3	MCO 3 enrollment rate per 1,000	Number enrolled in FFS	FFS enrollment rate per 1,000
Monroe County	1,519	689	454	224	325	381	553	60	87	24	35
Morgan County	1,827	838	459	183	218	576	687	49	58	30	36
Nicholas County	2,989	1,680	562	776	462	711	423	141	84	52	31
Ohio County	4,464	2,248	504	742	330	452	201	958	426	96	43
Pendleton County	724	320	442	53	166	230	719	24	75	13	41
Pleasants County	752	378	503	126	333	111	294	126	333	15	40
Pocahontas County	810	476	588	148	311	259	544	45	95	24	50
Preston County	3,679	1,725	469	514	298	562	326	580	336	69	40
Putnam County	7,283	2,508	344	1,349	538	834	333	206	82	119	47
Raleigh County	9,116	5,329	585	2,118	397	2,610	490	423	79	178	33
Randolph County	3,085	1,719	557	695	404	541	315	410	239	73	42
Ritchie County	1,148	612	533	215	351	188	307	197	322	12	20
Roane County	1,747	983	563	445	453	392	399	116	118	30	31
Summers County	1,249	873	699	263	301	490	561	83	95	37	42
Taylor County	1,958	954	487	353	370	271	284	302	317	28	29
Tucker County	560	323	577	94	291	141	437	70	217	18	56
Tyler County	974	491	504	152	310	126	257	203	413	**	20
Upshur County	2,843	1,652	581	524	317	511	309	568	344	49	30
Wayne County	4,781	2,738	573	2,220	811	241	88	166	61	111	41
Webster County	960	725	755	297	410	317	437	98	135	13	18
Wetzel County	1,825	1,033	566	326	316	247	239	430	416	30	29
Wirt County	9,981	5,035	504	1,929	383	1,414	281	1,536	305	156	31
Wood County	2,463	1,513	614	585	387	749	495	139	92	40	26
Wyoming County	2,463	1,513	614	585	387	749	495	139	92	40	26

\*Enrollment data for Brooke and Hancock counties are managed by WV DHHR - please refer to internal data.

\*\*Note: Values between 1 and 10 are not reported.

Table 4 – Medicaid Enrollment & Managed Care Enrollment for 2020 - Ages 15 to 24

County	Estimated population: ACS 2015-2019	Total number enrolled in Medicaid	Medicaid enrollment rate per 1,000	Number enrolled in MCO 1	MCO 1 enrollment rate per 1,000	Number enrolled in MCO 2	MCO 2 enrollment rate per 1,000	Number enrolled in MCO 3	MCO 3 enrollment rate per 1,000	Number enrolled in FFS	FFS enrollment rate per 1,000
Barbour County	2,645	821	310	236	287	247	301	235	286	103	125
Berkeley County	13,376	4,971	372	1,165	234	2,518	507	502	101	786	158
Boone County	2,490	1,477	593	646	437	468	317	184	125	179	121
Braxton County	1,425	655	460	183	279	302	461	88	134	82	125
Brooke County*	*	*	*	*	*	*	*	*	*	*	*
Cabell County	15,757	4,495	285	2,683	597	651	145	481	107	680	151
Calhoun County	648	416	642	136	327	147	353	71	171	62	149
Clay County	1,020	561	550	256	456	165	294	61	109	79	141
Doddridge County	1,152	288	250	64	222	63	219	125	434	36	125
Fayette County	4,624	2,300	497	810	352	974	423	246	107	270	117
Gilmer County	1,452	355	244	103	290	112	315	103	290	37	104
Grant County	1,258	493	392	95	193	299	606	34	69	65	132
Greenbrier County	3,607	1,639	454	448	273	803	490	167	102	221	135
Hampshire County	2,572	1,089	423	247	227	608	558	76	70	158	145
Hancock County*	*	*	*	*	*	*	*	*	*	*	*
Hardy County	1,389	624	449	115	184	367	588	66	106	76	122
Harrison County	7,578	2,760	364	656	238	683	247	1,055	382	366	133
Jackson County	3,212	1,409	439	545	387	507	360	157	111	200	142
Jefferson County	6,972	1,648	236	369	224	915	555	144	87	220	133
Kanawha County	20,226	9,071	448	4,371	482	2,438	269	1,097	121	1,165	128
Lewis County	1,675	846	505	191	226	243	287	308	364	104	123
Lincoln County	2,188	1,353	618	592	438	452	334	143	106	166	123
Logan County	3,466	2,343	676	774	330	1,004	429	241	103	324	138
Marion County	8,258	2,416	293	561	232	591	245	951	394	313	130
Marshall County	3,249	1,150	354	193	168	159	138	638	555	160	139
Mason County	2,825	1,209	428	774	640	173	143	115	95	147	122
McDowell County	1,825	1,347	738	310	230	801	595	84	62	152	113
Mercer County	7,221	3,821	529	1,105	289	1,795	470	442	116	479	125
Mineral County	3,406	959	282	195	203	570	594	53	55	141	147
Mingo County	2,633	1,893	719	713	377	765	404	177	94	238	126
Monongalia County	25,295	2,857	113	741	259	870	305	845	296	401	140
Monroe County	1,296	501	387	151	301	242	483	52	104	56	112

County	Estimated population: ACS 2015-2019	Total number enrolled in Medicaid	Medicaid enrollment rate per 1,000	Number enrolled in MCO 1	MCO 1 enrollment rate per 1,000	Number enrolled in MCO 2	MCO 2 enrollment rate per 1,000	Number enrolled in MCO 3	MCO 3 enrollment rate per 1,000	Number enrolled in FFS	FFS enrollment rate per 1,000
Morgan County	1,866	685	367	113	165	426	622	40	58	106	155
Nicholas County	2,512	1,293	515	462	357	549	425	112	87	170	131
Ohio County	5,756	1,580	274	398	252	269	170	694	439	219	139
Pendleton County	685	267	390	35	131	177	663	29	109	26	97
Pleasants County	970	327	337	92	281	92	281	92	281	51	156
Pocahontas County	772	380	492	90	237	190	500	50	132	50	132
Preston County	3,454	1,173	340	253	216	371	316	395	337	154	131
Putnam County	6,307	1,923	305	911	474	523	272	199	103	290	151
Raleigh County	8,241	4,166	506	1,457	350	1,781	428	428	103	500	120
Randolph County	3,390	1,202	355	351	292	429	357	297	247	125	104
Ritchie County	1,033	515	499	147	285	121	235	183	355	64	124
Roane County	1,484	821	553	251	306	369	449	88	107	113	138
Summers County	1,150	666	579	148	222	399	599	50	75	69	104
Taylor County	1,638	711	434	192	270	194	273	238	335	87	122
Tucker County	728	228	313	48	211	97	425	54	237	29	127
Tyler County	942	324	344	70	216	68	210	155	478	31	96
Upshur County	3,706	1,316	355	322	245	376	286	470	357	148	112
Wayne County	4,567	2,182	478	1,433	657	229	105	184	84	336	154
Webster County	862	616	715	180	292	297	482	79	128	60	97
Wetzel County	1,730	804	465	188	234	169	210	337	419	110	137
Wirt County	547	329	601	106	322	87	264	82	249	54	164
Wood County	9,572	3,925	410	1,338	341	972	248	1,084	276	531	135
Wyoming County	2,316	1,370	592	390	285	707	516	145	106	128	93

\*Enrollment data for Brooke and Hancock counties are managed by WV DHHR - please refer to internal data.

\*\*Note: Values between 1 and 10 are not reported.



Table 5 – Medicaid Enrollment & Managed Care Enrollment for 2020 - Ages 25 to 34

County	Estimated population: ACS 2015-2019	Total number enrolled in Medicaid	Medicaid enrollment rate per 1,000	Number enrolled in MCO 1	MCO 1 enrollment rate per 1,000	Number enrolled in MCO 2	MCO 2 enrollment rate per 1,000	Number enrolled in MCO 3	MCO 3 enrollment rate per 1,000	Number enrolled in FFS	FFS enrollment rate per 1,000
Barbour County	1,725	734	426	183	249	245	334	232	316	74	101
Berkeley County	15,666	4,572	292	1,237	271	2,086	456	713	156	536	117
Boone County	2,232	1,196	536	443	370	371	310	281	235	101	84
Braxton County	1,638	640	391	203	317	224	350	143	223	70	109
Brooke County*	*	*	*	*	*	*	*	*	*	*	*
Cabell County	11,701	5,429	464	2,794	515	1,121	206	883	163	631	116
Calhoun County	668	304	455	84	276	114	375	66	217	40	132
Clay County	790	534	676	213	399	167	313	104	195	50	94
Doddridge County	933	248	266	44	177	85	343	94	379	25	101
Fayette County	4,750	2,009	423	637	317	753	375	423	211	196	98
Gilmer County	1,025	241	235	74	307	67	278	70	290	30	124
Grant County	1,233	465	377	70	151	253	544	66	142	76	163
Greenbrier County	3,926	1,558	397	439	282	642	412	292	187	185	119
Hampshire County	2,367	909	384	197	217	491	540	109	120	112	123
Hancock County*	*	*	*	*	*	*	*	*	*	*	*
Hardy County	1,365	530	388	102	192	284	536	68	128	76	143
Harrison County	8,080	2,812	348	687	244	850	302	922	328	353	126
Jackson County	3,192	1,196	375	383	320	424	355	248	207	141	118
Jefferson County	6,252	1,550	248	374	241	752	485	219	141	205	132
Kanawha County	22,473	9,176	408	3,488	380	2,727	297	1,972	215	989	108
Lewis County	1,847	878	475	218	248	272	310	292	333	96	109
Lincoln County	2,213	1,203	544	504	419	380	316	210	175	109	91
Logan County	3,740	1,982	530	727	367	699	353	380	192	176	89
Marion County	6,555	2,438	372	596	244	771	316	801	329	270	111
Marshall County	3,407	1,088	319	240	221	195	179	543	499	110	101
Mason County	2,909	1,095	376	597	545	196	179	199	182	103	94
McDowell County	2,077	1,216	585	260	214	664	546	178	146	114	94
Mercer County	6,974	3,569	512	1,062	298	1,452	407	680	191	375	105
Mineral County	3,015	905	300	140	155	562	621	98	108	105	116
Mingo County	2,756	1,590	577	581	365	611	384	272	171	126	79
Monongalia County	17,822	3,140	176	810	258	992	316	888	283	450	143
Monroe County	1,389	438	315	141	322	179	409	67	153	51	116

County	Estimated population: ACS 2015-2019	Total number enrolled in Medicaid	Medicaid enrollment rate per 1,000	Number enrolled in MCO 1	MCO 1 enrollment rate per 1,000	Number enrolled in MCO 2	MCO 2 enrollment rate per 1,000	Number enrolled in MCO 3	MCO 3 enrollment rate per 1,000	Number enrolled in FFS	FFS enrollment rate per 1,000
Morgan County	1,749	577	330	127	220	308	534	82	142	60	104
Nicholas County	2,728	1,246	457	392	315	478	384	235	189	141	113
Ohio County	4,733	1,684	356	334	198	323	192	835	496	192	114
Pendleton County	618	216	350	55	255	106	491	24	111	31	144
Pleasants County	851	304	357	89	293	88	289	90	296	37	122
Pocahontas County	917	325	354	93	286	136	418	61	188	35	108
Preston County	4,455	1,226	275	311	254	438	357	336	274	141	115
Putnam County	6,577	1,641	250	665	405	471	287	318	194	187	114
Raleigh County	8,991	3,872	431	1,207	312	1,521	393	721	186	423	109
Randolph County	3,559	1,169	328	266	228	458	392	293	251	152	130
Ritchie County	944	388	411	116	299	107	276	126	325	39	101
Roane County	1,375	672	489	199	296	225	335	152	226	96	143
Summers County	1,363	577	423	169	293	248	430	104	180	56	97
Taylor County	2,071	653	315	146	224	203	311	221	338	83	127
Tucker County	720	209	290	48	230	81	388	41	196	39	187
Tyler County	868	348	401	71	204	94	270	155	445	28	80
Upshur County	2,674	1,229	460	293	238	445	362	369	300	122	99
Wayne County	4,348	1,928	443	1,190	617	282	146	241	125	215	112
Webster County	812	525	647	144	274	201	383	130	248	50	95
Wetzel County	1,556	773	497	174	225	177	229	337	436	85	110
Wirt County	648	246	380	67	272	60	244	80	325	39	159
Wood County	9,527	4,046	425	1,138	281	1,107	274	1,280	316	521	129
Wyoming County	2,179	1,065	489	295	277	455	427	200	188	115	108

\*Enrollment data for Brooke and Hancock counties are managed by WV DHHR - please refer to internal data.

\*\*Note: Values between 1 and 10 are not reported.

Table 6 – Medicaid Enrollment & Managed Care Enrollment for 2020- Ages 35 to 44

County	Estimated population: ACS 2015-2019	Total number enrolled in Medicaid	Medicaid enrollment rate per 1,000	Number enrolled in MCO 1	MCO 1 enrollment rate per 1,000	Number enrolled in MCO 2	MCO 2 enrollment rate per 1,000	Number enrolled in MCO 3	MCO 3 enrollment rate per 1,000	Number enrolled in FFS	FFS enrollment rate per 1,000
Barbour County	1,840	669	364	137	205	216	323	205	306	111	166
Berkeley County	15,685	3,695	236	914	247	1,709	463	534	145	538	146
Boone County	2,950	1,322	448	480	363	389	294	279	211	174	132
Braxton County	1,560	605	388	182	301	222	367	131	217	70	116
Brooke County*	*	*	*	*	*	*	*	*	*	*	*
Cabell County	11,062	4,594	415	2,484	541	739	161	682	148	689	150
Calhoun County	842	362	430	94	260	117	323	86	238	65	180
Clay County	1,030	540	524	197	365	154	285	111	206	78	144
Doddridge County	1,125	284	252	73	257	66	232	109	384	36	127
Fayette County	5,358	2,018	377	630	312	774	384	336	167	278	138
Gilmer County	1,146	253	221	51	202	82	324	77	304	43	170
Grant County	1,265	394	311	56	142	224	569	48	122	66	168
Greenbrier County	4,129	1,431	347	368	257	631	441	233	163	199	139
Hampshire County	2,534	755	298	149	197	404	535	87	115	115	152
Hancock County*	*	*	*	*	*	*	*	*	*	*	*
Hardy County	1,627	477	293	78	164	257	539	81	170	61	128
Harrison County	8,405	2,661	317	576	216	732	275	943	354	410	154
Jackson County	3,448	1,160	336	382	329	393	339	200	172	185	159
Jefferson County	7,404	1,275	172	263	206	701	550	124	97	187	147
Kanawha County	22,200	8,500	383	3,276	385	2,367	278	1,629	192	1,228	144
Lewis County	1,923	828	431	175	211	250	302	286	345	117	141
Lincoln County	2,678	1,237	462	516	417	362	293	209	169	150	121
Logan County	4,420	2,251	509	867	385	689	306	412	183	283	126
Marion County	6,657	2,113	317	481	228	615	291	731	346	286	135
Marshall County	3,654	1,028	281	167	162	157	153	540	525	164	160
Mason County	3,270	1,141	349	626	549	181	159	184	161	150	131
McDowell County	2,259	1,387	614	267	193	737	531	183	132	200	144
Mercer County	6,781	3,262	481	818	251	1,428	438	533	163	483	148
Mineral County	2,930	746	255	104	139	448	601	61	82	133	178
Mingo County	3,069	1,813	591	662	365	653	360	256	141	242	133
Monongalia County	12,783	2,343	183	545	233	711	303	747	319	340	145
Monroe County	1,478	432	292	96	222	200	463	73	169	63	146

County	Estimated population: ACS 2015-2019	Total number enrolled in Medicaid	Medicaid enrollment rate per 1,000	Number enrolled in MCO 1	MCO 1 enrollment rate per 1,000	Number enrolled in MCO 2	MCO 2 enrollment rate per 1,000	Number enrolled in MCO 3	MCO 3 enrollment rate per 1,000	Number enrolled in FFS	FFS enrollment rate per 1,000
Morgan County	1,889	482	255	84	174	254	527	72	149	72	149
Nicholas County	2,978	1,200	403	397	331	436	363	205	171	162	135
Ohio County	4,692	1,582	337	273	173	276	174	810	512	223	141
Pendleton County	693	212	306	45	212	107	505	22	104	38	179
Pleasants County	959	252	263	71	282	57	226	79	313	45	179
Pocahontas County	914	347	380	81	233	141	406	68	196	57	164
Preston County	4,337	1,157	267	249	215	386	334	381	329	141	122
Putnam County	7,452	1,490	200	608	408	424	285	222	149	236	158
Raleigh County	9,933	3,724	375	1,046	281	1,507	405	623	167	548	147
Randolph County	3,231	1,018	315	222	218	345	339	281	276	170	167
Ritchie County	1,070	390	364	102	262	94	241	138	354	56	144
Roane County	1,632	684	419	164	240	255	373	131	192	134	196
Summers County	1,669	667	400	178	267	287	430	97	145	105	157
Taylor County	2,108	577	274	115	199	170	295	235	407	57	99
Tucker County	757	235	310	39	166	86	366	60	255	50	213
Tyler County	963	285	296	60	211	60	211	112	393	53	186
Upshur County	2,629	1,118	425	242	216	334	299	385	344	157	140
Wayne County	4,937	1,818	368	1,117	614	219	120	228	125	254	140
Webster County	926	570	616	176	309	221	388	106	186	67	118
Wetzel County	1,672	674	403	130	193	125	185	328	487	91	135
Wirt County	671	293	437	83	283	73	249	84	287	53	181
Wood County	10,165	3,626	357	1,000	276	861	237	1,115	308	650	179
Wyoming County	2,733	1,270	465	311	245	540	425	248	195	171	135

\*Enrollment data for Brooke and Hancock counties are managed by WV DHHR - please refer to internal data.

\*\*Note: Values between 1 and 10 are not reported.

Table 7 – Medicaid Enrollment & Managed Care Enrollment for 2020 - Ages 45 to 54

County	Estimated population: ACS 2015-2019	Total number enrolled in Medicaid	Medicaid enrollment rate per 1,000	Number enrolled in MCO 1	MCO 1 enrollment rate per 1,000	Number enrolled in MCO 2	MCO 2 enrollment rate per 1,000	Number enrolled in MCO 3	MCO 3 enrollment rate per 1,000	Number enrolled in FFS	FFS enrollment rate per 1,000
Barbour County	2,118	659	311	134	203	170	258	181	275	174	264
Berkeley County	16,218	2,849	176	637	224	1,138	399	425	149	649	228
Boone County	3,114	1,240	398	400	323	271	219	282	227	287	231
Braxton County	1,892	581	307	146	251	185	318	125	215	125	215
Brooke County*	*	*	*	*	*	*	*	*	*	*	*
Cabell County	11,064	3,456	312	1,655	479	492	142	424	123	885	256
Calhoun County	988	322	326	91	283	79	245	60	186	92	286
Clay County	1,160	531	458	188	354	119	224	102	192	122	230
Doddridge County	1,271	226	178	45	199	57	252	79	350	45	199
Fayette County	5,701	1,825	320	450	247	591	324	307	168	477	261
Gilmer County	993	238	240	51	214	54	227	81	340	52	218
Grant County	1,582	341	216	48	141	148	434	39	114	106	311
Greenbrier County	4,501	1,175	261	307	261	418	356	186	158	264	225
Hampshire County	3,356	746	222	148	198	366	491	78	105	154	206
Hancock County*	*	*	*	*	*	*	*	*	*	*	*
Hardy County	2,088	402	193	76	189	180	448	44	109	102	254
Harrison County	9,078	2,143	236	410	191	511	238	713	333	509	238
Jackson County	3,919	896	229	240	268	272	304	144	161	240	268
Jefferson County	8,765	1,128	129	239	212	494	438	145	129	250	222
Kanawha County	23,561	6,778	288	2,283	337	1,590	235	1,213	179	1,692	250
Lewis County	2,268	706	311	116	164	197	279	211	299	182	258
Lincoln County	2,911	1,189	408	414	348	288	242	211	177	276	232
Logan County	4,356	2,150	494	687	320	636	296	380	177	447	208
Marion County	7,160	1,833	256	361	197	441	241	609	332	422	230
Marshall County	4,255	806	189	111	138	107	133	420	521	168	208
Mason County	3,481	887	255	418	471	125	141	127	143	217	245
McDowell County	2,409	1,401	582	218	156	674	481	183	131	326	233
Mercer County	7,430	2,869	386	571	199	1,075	375	479	167	744	259
Mineral County	3,810	690	181	105	152	347	503	74	107	164	238
Mingo County	3,286	1,776	540	594	334	541	305	274	154	367	207
Monongalia County	10,908	1,626	149	343	211	415	255	502	309	366	225
Monroe County	1,809	416	230	93	224	166	399	58	139	99	238

County	Estimated population: ACS 2015-2019	Total number enrolled in Medicaid	Medicaid enrollment rate per 1,000	Number enrolled in MCO 1	MCO 1 enrollment rate per 1,000	Number enrolled in MCO 2	MCO 2 enrollment rate per 1,000	Number enrolled in MCO 3	MCO 3 enrollment rate per 1,000	Number enrolled in FFS	FFS enrollment rate per 1,000
Morgan County	2,639	462	175	81	175	232	502	42	91	107	232
Nicholas County	3,314	1,138	343	285	250	366	322	187	164	300	264
Ohio County	5,007	1,174	234	201	171	130	111	567	483	276	235
Pendleton County	900	210	233	26	124	107	510	20	95	57	271
Pleasants County	1,091	206	189	45	218	30	146	61	296	70	340
Pocahontas County	1,110	282	254	60	213	100	355	54	191	68	241
Preston County	4,618	949	206	177	187	272	287	261	275	239	252
Putnam County	7,792	1,255	161	441	351	284	226	185	147	345	275
Raleigh County	9,252	3,222	348	797	247	1,056	328	551	171	818	254
Randolph County	3,847	942	245	170	180	290	308	225	239	257	273
Ritchie County	1,386	363	262	77	212	92	253	93	256	101	278
Roane County	1,896	645	340	138	214	200	310	109	169	198	307
Summers County	1,724	579	336	128	221	207	358	93	161	151	261
Taylor County	2,396	537	224	93	173	129	240	176	328	139	259
Tucker County	1,006	193	192	36	187	58	301	42	218	57	295
Tyler County	1,260	306	243	53	173	67	219	130	425	56	183
Upshur County	3,135	869	277	163	188	257	296	238	274	211	243
Wayne County	5,463	1,673	306	925	553	201	120	155	93	392	234
Webster County	1,154	572	496	122	213	178	311	120	210	152	266
Wetzel County	2,076	605	291	100	165	101	167	252	417	152	251
Wirt County	800	282	353	66	234	76	270	71	252	69	245
Wood County	11,550	2,871	249	723	252	592	206	676	235	880	307
Wyoming County	2,730	1,179	432	250	212	440	373	190	161	299	254

\*Enrollment data for Brooke and Hancock counties are managed by WV DHHR - please refer to internal data.

\*\*Note: Values between 1 and 10 are not reported.

Table 8 – Medicaid Enrollment & Managed Care Enrollment for 2020 - Ages 55 to 64

County	Estimated population: ACS 2015-2019	Total number enrolled in Medicaid	Medicaid enrollment rate per 1,000	Number enrolled in MCO 1	MCO 1 enrollment rate per 1,000	Number enrolled in MCO 2	MCO 2 enrollment rate per 1,000	Number enrolled in MCO 3	MCO 3 enrollment rate per 1,000	Number enrolled in FFS	FFS enrollment rate per 1,000
Barbour County	2,353	658	280	141	214	106	161	163	248	248	377
Berkeley County	15,193	2,770	182	602	217	831	300	367	132	970	350
Boone County	3,413	1,003	294	266	265	165	165	195	194	377	376
Braxton County	2,176	638	293	149	234	143	224	126	197	220	345
Brooke County*	*	*	*	*	*	*	*	*	*	*	*
Cabell County	11,966	3,196	267	1,237	387	298	93	364	114	1,297	406
Calhoun County	1,218	407	334	95	233	124	305	71	174	117	287
Clay County	1,347	523	388	138	264	83	159	94	180	208	398
Doddridge County	1,269	282	222	65	230	45	160	80	284	92	326
Fayette County	6,715	1,898	283	385	203	488	257	298	157	727	383
Gilmer County	1,069	277	259	47	170	62	224	76	274	92	332
Grant County	1,711	416	243	64	154	130	312	46	111	176	423
Greenbrier County	5,380	1,359	253	311	229	397	292	187	138	464	341
Hampshire County	3,802	805	212	133	165	312	388	93	116	267	332
Hancock County*	*	*	*	*	*	*	*	*	*	*	*
Hardy County	2,005	460	229	71	154	166	361	56	122	167	363
Harrison County	9,836	2,196	223	382	174	410	187	604	275	800	364
Jackson County	4,269	966	226	248	257	212	219	156	161	350	362
Jefferson County	7,919	1,192	151	216	181	401	336	175	147	400	336
Kanawha County	27,736	6,893	249	1,804	262	1,300	189	1,182	171	2,607	378
Lewis County	2,296	705	307	116	165	151	214	180	255	258	366
Lincoln County	3,046	1,160	381	336	290	210	181	180	155	434	374
Logan County	5,120	1,641	321	416	254	389	237	267	163	569	347
Marion County	7,542	1,825	242	326	179	349	191	516	283	634	347
Marshall County	4,973	882	177	134	152	91	103	374	424	283	321
Mason County	4,143	999	241	374	374	128	128	121	121	376	376
McDowell County	3,043	1,357	446	159	117	568	419	137	101	493	363
Mercer County	8,537	2,654	311	451	170	790	298	349	131	1,064	401
Mineral County	3,834	719	188	100	139	245	341	89	124	285	396
Mingo County	3,729	1,486	398	416	280	393	264	173	116	504	339
Monongalia County	11,213	1,566	140	330	211	290	185	398	254	548	350
Monroe County	1,979	417	211	88	211	118	283	52	125	159	381

County	Estimated population: ACS 2015-2019	Total number enrolled in Medicaid	Medicaid enrollment rate per 1,000	Number enrolled in MCO 1	MCO 1 enrollment rate per 1,000	Number enrolled in MCO 2	MCO 2 enrollment rate per 1,000	Number enrolled in MCO 3	MCO 3 enrollment rate per 1,000	Number enrolled in FFS	FFS enrollment rate per 1,000
Morgan County	2,903	534	184	69	129	224	419	50	94	191	358
Nicholas County	3,817	1,146	300	284	248	278	243	155	135	429	374
Ohio County	6,395	1,281	200	178	139	128	100	523	408	452	353
Pendleton County	1,214	227	187	28	123	96	423	21	93	82	361
Pleasants County	1,127	229	203	41	179	25	109	78	341	85	371
Pocahontas County	1,423	360	253	66	183	112	311	56	156	126	350
Preston County	4,839	1,050	217	202	192	223	212	266	253	359	342
Putnam County	8,000	1,237	155	354	286	219	177	181	146	483	390
Raleigh County	10,633	2,843	267	592	208	729	256	422	148	1,100	387
Randolph County	4,210	1,086	258	184	169	228	210	203	187	471	434
Ritchie County	1,546	408	264	85	208	86	211	89	218	148	363
Roane County	2,232	654	293	153	234	163	249	96	147	242	370
Summers County	2,095	638	305	102	160	185	290	90	141	261	409
Taylor County	2,476	566	229	102	180	105	186	174	307	185	327
Tucker County	1,131	232	205	38	164	64	276	41	177	89	384
Tyler County	1,438	321	223	75	234	55	171	110	343	81	252
Upshur County	3,339	885	265	155	175	193	218	221	250	316	357
Wayne County	5,921	1,637	276	773	472	156	95	140	86	568	347
Webster County	1,351	595	440	133	224	164	276	93	156	205	345
Wetzel County	2,286	607	266	99	163	82	135	199	328	227	374
Wirt County	973	296	304	74	250	50	169	55	186	117	395
Wood County	12,386	2,823	228	670	237	380	135	560	198	1,213	430
Wyoming County	3,361	1,001	298	167	167	308	308	149	149	377	377

\*Enrollment data for Brooke and Hancock counties are managed by WV DHHR - please refer to internal data.

\*\*Note: Values between 1 and 10 are not reported.



Table 9 – Medicaid Enrollment & Managed Care Enrollment for 2020 - Ages 65 to 74

County	Estimated population: ACS 2015-2019	Total number enrolled in Medicaid	Medicaid enrollment rate per 1,000	Number enrolled in MCO 1	MCO 1 enrollment rate per 1,000	Number enrolled in MCO 2	MCO 2 enrollment rate per 1,000	Number enrolled in MCO 3	MCO 3 enrollment rate per 1,000	Number enrolled in FFS	FFS enrollment rate per 1,000
Barbour County	1,902	314	165	**	**	0	0	0	0	313	997
Berkeley County	10,867	1,138	105	**	**	**	**	**	**	1,129	992
Boone County	2,708	467	172	0	0	**	**	**	**	463	991
Braxton County	1,865	335	180	0	0	**	**	**	**	333	994
Brooke County*	*	*	*	*	*	*	*	*	*	*	*
Cabell County	9,850	1,431	145	**	**	0	0	**	**	1,424	995
Calhoun County	1,036	228	220	0	0	**	**	0	0	226	991
Clay County	1,024	283	276	0	0	0	0	**	**	282	996
Doddridge County	1,078	107	99	0	0	0	0	0	0	107	1,000
Fayette County	5,268	959	182	**	**	0	0	0	0	958	999
Gilmer County	724	141	195	**	**	0	0	0	0	140	993
Grant County	1,639	218	133	0	0	**	**	0	0	217	995
Greenbrier County	4,585	620	135	**	**	**	**	**	**	614	990
Hampshire County	3,155	353	112	**	**	0	0	0	0	352	997
Hancock County*	*	*	*	*	*	*	*	*	*	*	*
Hardy County	1,778	201	113	0	0	**	**	0	0	200	995
Harrison County	7,319	905	124	**	**	0	0	**	**	903	998
Jackson County	3,160	462	146	0	0	0	0	0	0	462	1,000
Jefferson County	5,561	529	95	0	0	**	**	**	**	526	994
Kanawha County	21,266	2,823	133	**	**	**	**	**	**	2,806	994
Lewis County	1,952	365	187	0	0	0	0	**	**	364	997
Lincoln County	2,337	509	218	0	0	**	**	**	**	504	990
Logan County	4,012	667	166	**	**	0	0	**	**	664	996
Marion County	6,249	814	130	**	**	**	**	**	**	811	996
Marshall County	4,034	406	101	0	0	0	0	0	0	406	1,000
Mason County	3,148	487	155	**	0	0	0	**	**	486	998
McDowell County	2,330	633	272	**	**	**	**	**	**	630	995
Mercer County	7,428	1,178	159	0	0	**	**	**	**	1,173	996
Mineral County	3,427	366	107	0	0	**	**	0	0	363	992
Mingo County	2,794	639	229	**	**	**	**	**	**	634	992
Monongalia County	7,838	625	80	**	**	**	**	**	**	616	986
Monroe County	1,931	186	96	0	0	0	0	0	0	186	1,000

County	Estimated population: ACS 2015-2019	Total number enrolled in Medicaid	Medicaid enrollment rate per 1,000	Number enrolled in MCO 1	MCO 1 enrollment rate per 1,000	Number enrolled in MCO 2	MCO 2 enrollment rate per 1,000	Number enrolled in MCO 3	MCO 3 enrollment rate per 1,000	Number enrolled in FFS	FFS enrollment rate per 1,000
Morgan County	2,451	225	92	0	0	**	**	0	0	224	996
Nicholas County	3,279	511	156	0	0	**	**	0	0	510	998
Ohio County	4,963	572	115	0	0	0	0	**	**	566	990
Pendleton County	966	147	152	0	0	0	0	0	0	147	1,000
Pleasants County	829	112	135	0	0	0	0	0	0	112	1,000
Pocahontas County	1,223	167	137	**	**	**	**	0	0	165	988
Preston County	3,951	560	142	**	**	0	0	**	**	558	996
Putnam County	6,061	501	83	**	**	0	0	0	0	499	996
Raleigh County	9,072	1,250	138	**	**	**	**	**	**	1,242	994
Randolph County	3,568	580	163	**	**	0	0	0	0	578	997
Ritchie County	1,344	212	158	0	0	0	0	**	**	211	995
Roane County	1,774	347	196	0	0	0	0	0	0	347	1,000
Summers County	1,805	310	172	0	0	0	0	0	0	310	1,000
Taylor County	1,961	275	140	0	0	**	**	0	0	274	996
Tucker County	1,022	107	105	0	0	0	0	**	**	106	991
Tyler County	1,115	139	125	0	0	0	0	0	0	139	1,000
Upshur County	2,822	403	143	0	0	**	**	0	0	401	995
Wayne County	4,781	708	148	0	0	0	0	0	0	708	1,000
Webster County	1,164	290	249	0	0	0	0	**	**	289	997
Wetzel County	1,932	285	148	0	0	**	**	**	**	283	993
Wirt County	687	117	170	0	0	0	0	0	0	117	1,000
Wood County	9,746	1,198	123	**	**	**	**	**	**	1,190	993
Wyoming County	2,811	417	148	0	0	0	0	0	0	417	1,000

\*Enrollment data for Brooke and Hancock counties are managed by WV DHHR - please refer to internal data.

\*\*Note: Values between 1 and 10 are not reported.

## REFERENCES

1. Medicaid Claims Data. (2020). West Virginia Department of Health and Human Resources.
2. American Community Survey. (2021). *ACS DEMOGRAPHIC AND HOUSING ESTIMATES - West Virginia*. Explore Census Data. <https://data.census.gov/cedsci/table?g=0400000US54.0500000&y=2019&tid=ACSDP5Y2019.DP05&hidePreview=true&tp=true>. (With Overlays).
3. Centers for Disease Control and Prevention. (2012, May 18). *Principles of Epidemiology*. Measures of Risk - Prevalence. <https://www.cdc.gov/csels/dsepd/ss1978/lesson3/section2.html>.
4. U.S. Census Bureau. (2016). Census Mapping Files, Tiger/ Line Shape Files, Release Date: August 27, 2019
5. US Department of Health & Human Services | Centers for Medicare & Medicaid Services. (2020, January 1). Guidance for CMS Cell Suppression Policy Web Page. CMS Cell Suppression Policy | Guidance Portal. Retrieved June 2, 2022, from <https://www.hhs.gov/guidance/document/cms-cell-suppression-policy>.

\*Note: there are 76 enrollees in WV claims data for 2020 with an “Unknown” county-code.<sup>1</sup>

\*\*Note: prevalence rates for 2020 were calculated according to CDC’s recommendations.